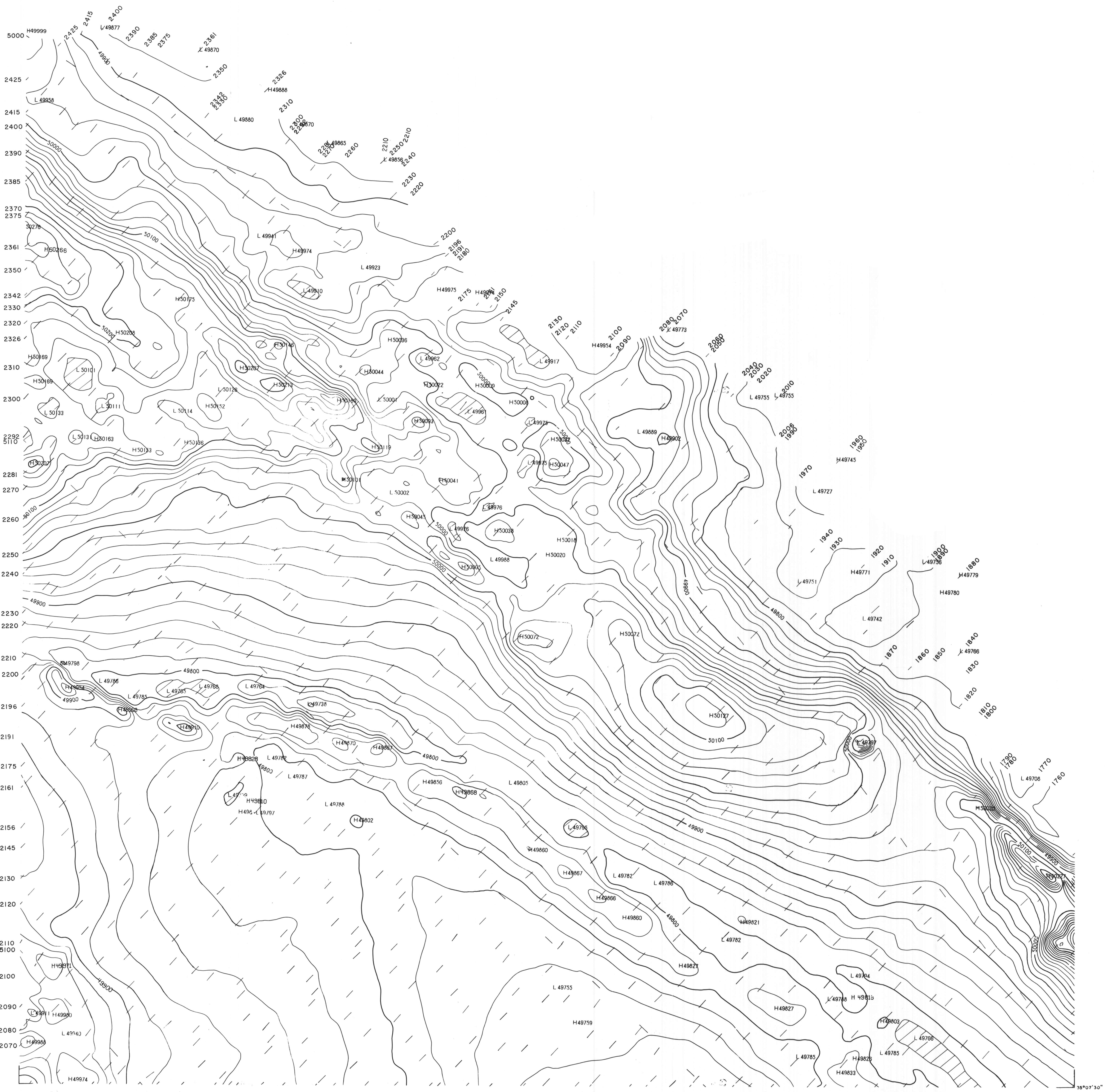


120°30'00"

120°00'00"  
35°37'30"



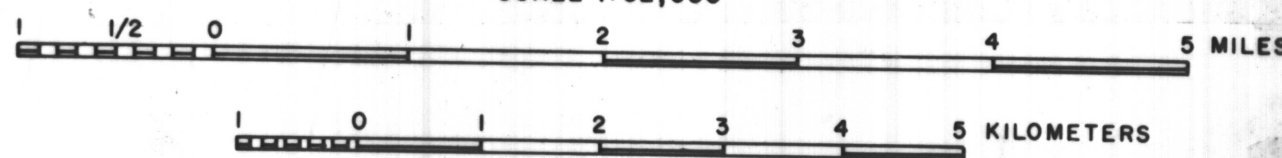
**AEROMAGNETIC MAP OF THE LOS PADRES AREA, CALIFORNIA**

BY

**U.S. GEOLOGICAL SURVEY**

1980

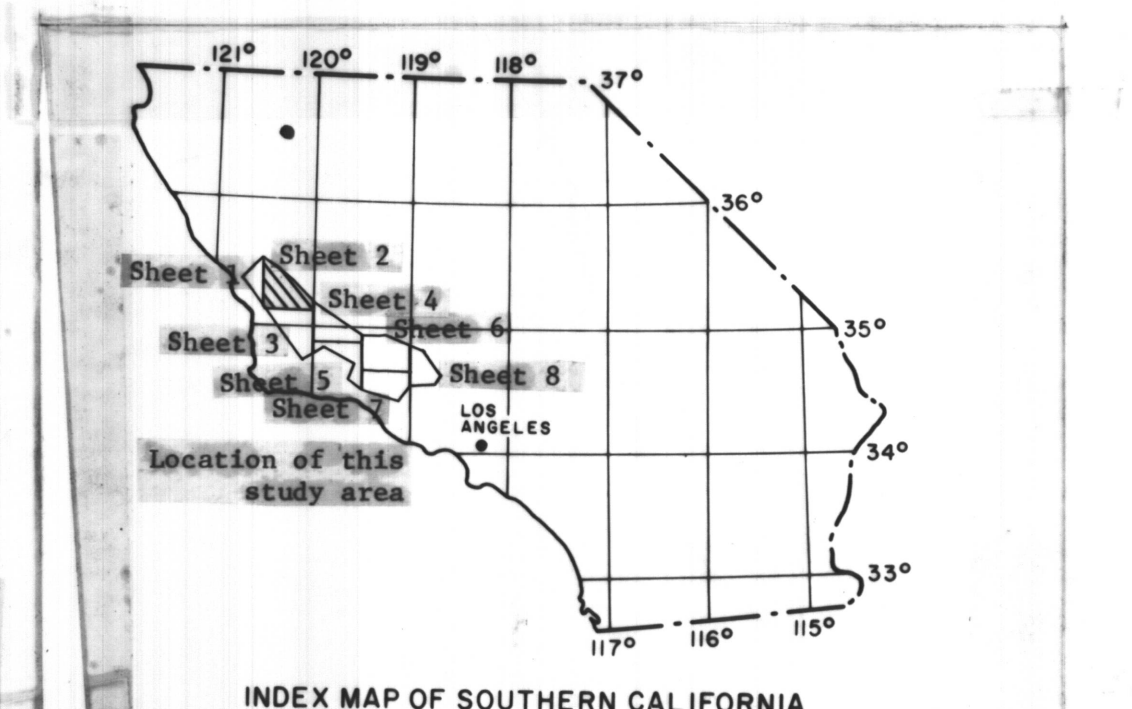
SCALE 1:62,500



This map is preliminary and has not been edited or reviewed for conformity to Geological Survey standards.

FLIGHT ALTITUDE ..... 1000' TERRAIN CLEARANCE  
 TYPE OF SENSOR ..... TRAVERSE ..... 1/2 MILE NE/SW, TIE LINE ..... VARIABLE DIRECTION  
 REGIONAL FIELD ..... 1975 I.G.F.F. UPDATED TO 1978-79  
 CONTOUR INTERVAL ..... 20 AND 100 DAMM/10 DAMM SUPPLEMENT  
 CONSTANT VALUE ADDED TO FINAL DATA ..... 49871 SW CORNER  
 TOTAL INTENSITY VALUE BEFORE REMOVAL OF THE I.G.F.F. ..... 49871 SW CORNER  
 SURVEYED AND COMPILED ..... U.S. GEOLOGICAL SURVEY, NOVEMBER 1979  
 U.S.G.S. CONTRACT NO. .... 14-08-0001-17940

**AERO SERVICE**  
 Litton Houston, Texas 77001  
 under contract to the  
 U.S. Geological Survey



INDEX MAP OF SOUTHERN CALIFORNIA