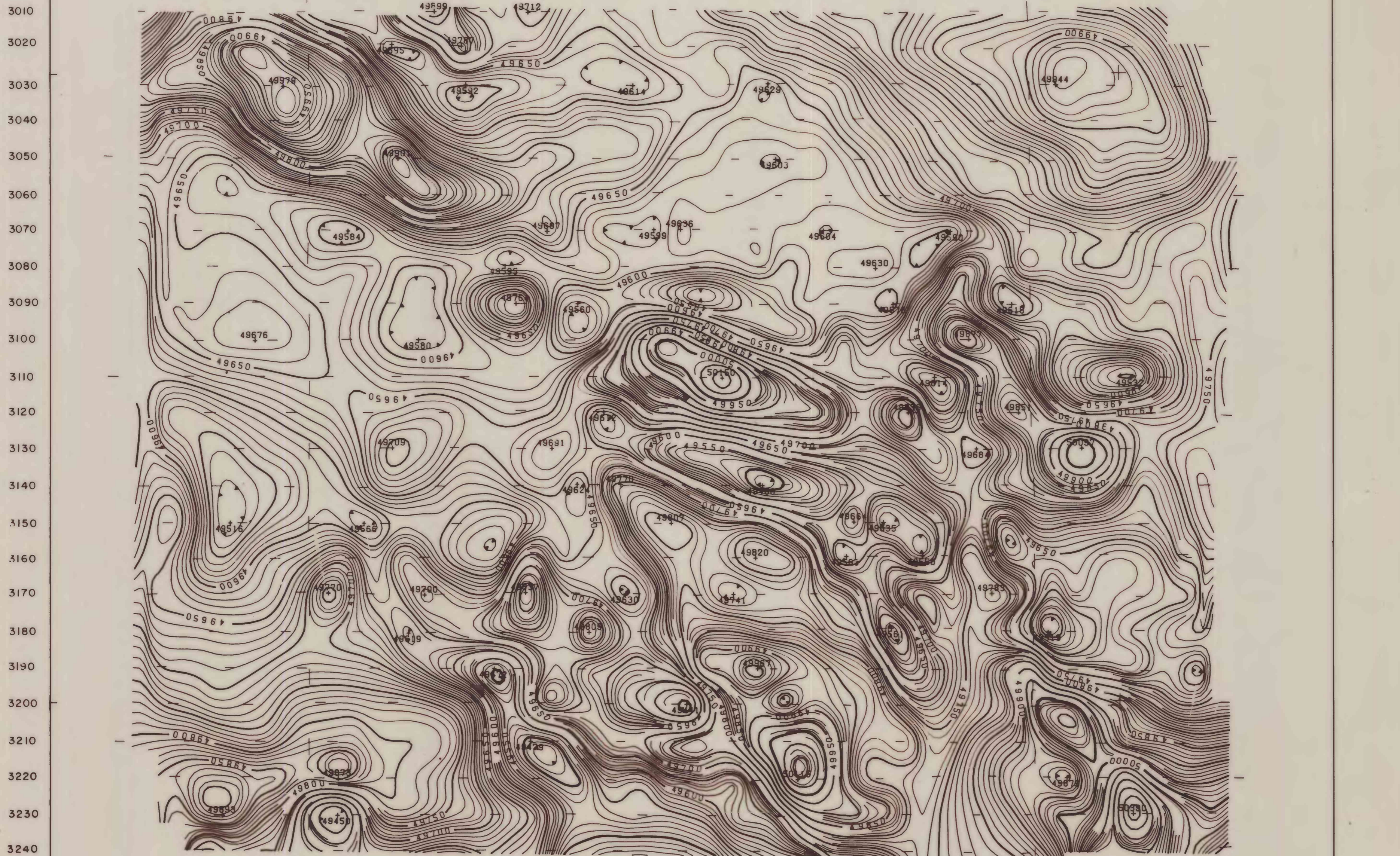


109° 30' 32° 15' 109° 15' 109° 12' 32° 15'



LEGEND

FLIGHT ALTITUDE 1000 FEET
 FLIGHT INTERVAL TRAVERSE 0.5 MILE TIE LINE VARIABLE
 TRAVERSE DIRECTION EAST - WEST
 CONTOUR INTERVAL 10 GAMMA
 PROJECTION U.T.M. CLARKE 1866, ZONE 12
 BASE MAP USED U.S.G.S. 1:24,000
 SURVEY FLOWN AND COMPILED JANUARY 1980 BY AIRMAG SURVEYS INC.
 PHILADELPHIA, PENNSYLVANIA
 MAGNETOMETER SAMPLING RATE .01 GAMMA PER MINUTE
 MAGNETOMETER USED AIRMAG MARK IV FLUXGATE
 AIRMAG PROJECT NO. 792

REGIONAL IGRF (1975-1979.75) CALCULATED EVERY 7 1/2 MINUTES AND APPLIED TO THE RECORDED FIELD.

TRAVERSE LINE 3240 FIDUCIAL 37590 HAS TOTAL MAGNETIC INTENSITY VALUE OF 49,700 GAMMA. SAMPLE TAKEN JANUARY 24, 1980 13:46 HOURS LOCAL TIME.
 CONTOUR VALUES ARE ORIENTED UP GRADIENT.

RECTANGULAR CONTOURING GRID NET OF 198.4 METERS N/S, E/W.

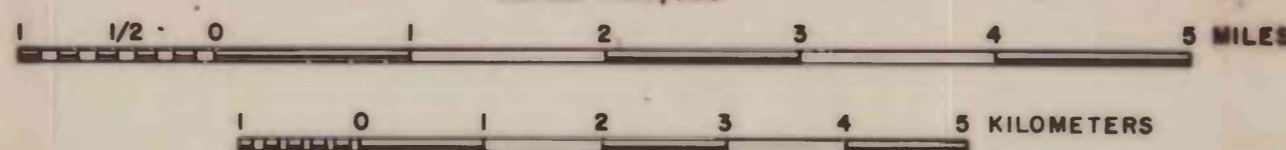
AEROMAGNETIC MAP OF THE NORTH END AREA, ARIZONA

BY

U.S. GEOLOGICAL SURVEY

1980

SCALE 1:62,500



This map was prepared under contract to the U.S. Geological Survey and has not been reviewed for conformity with USGS editorial standards. Opinions and conclusions expressed herein do not necessarily represent those of the USGS. Any use of trade names is for descriptive purposes only and does not imply endorsement by the USGS.

