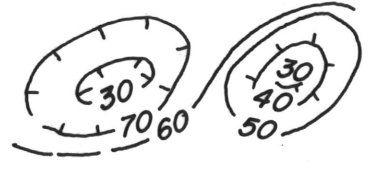


Offshore contour interval 10 m, 25 m, and 100 m
Onshore contour interval 200 ft with 100 ft contours represented by dotted lines

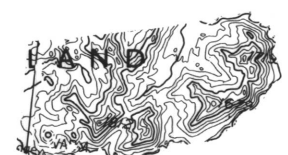
Albers Conic Equal-Area Projection
Based on parallels 55° N. and 65° N.



EXPLANATION



Contour interval 10 meters on continental shelf. A 20 or 25 meter intervals used where space does not permit a 10 meter interval. 100 or 500 meter intervals are used below the 300 meter level depending on the density of data. Dashed lines indicate where data is sparse. Hachures pointing inward indicate enclosed depressions in the topography and and hachures pointing outward indicate isolated high areas.

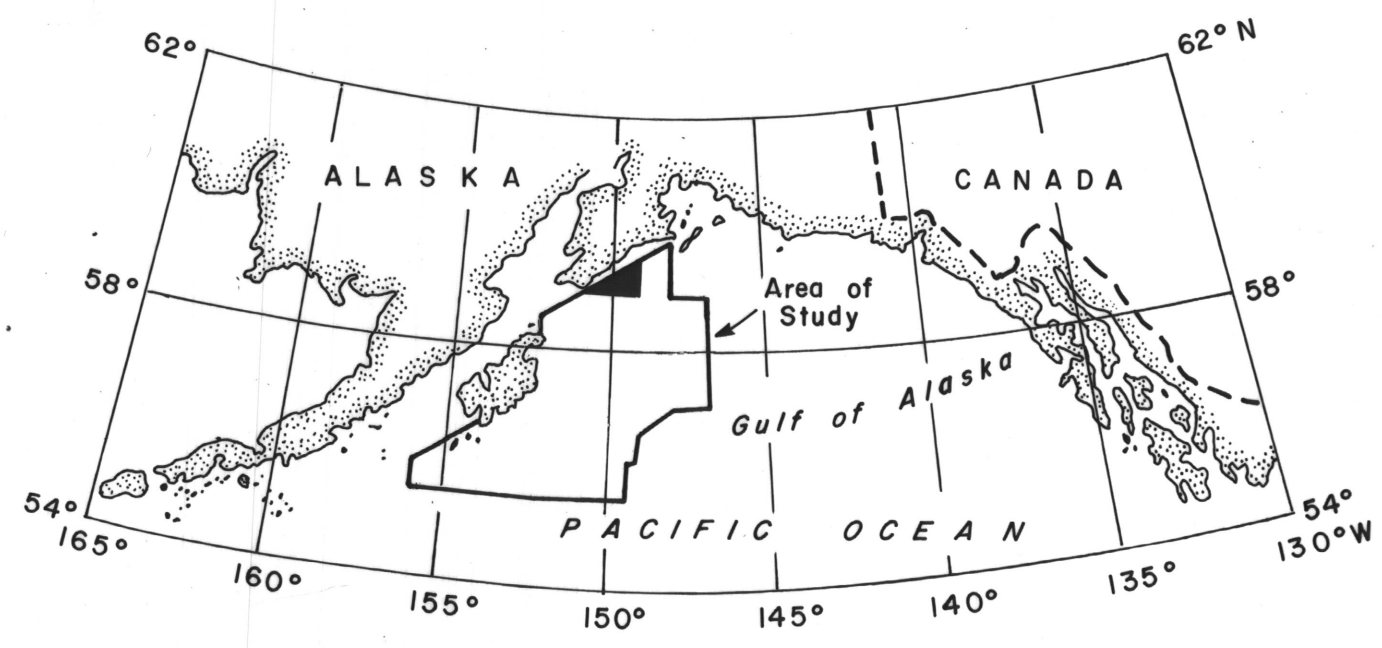


land areas

BATHYMETRIC MAP OF THE WESTERN GULF OF ALASKA

by

J.M. Dunlavey, J.R. Childs and R.E. von Huene



INDEX MAP

This report is preliminary and has not been edited or reviewed for conformity with Geological Survey standards and nomenclature. Maps are not intended for use in navigation.