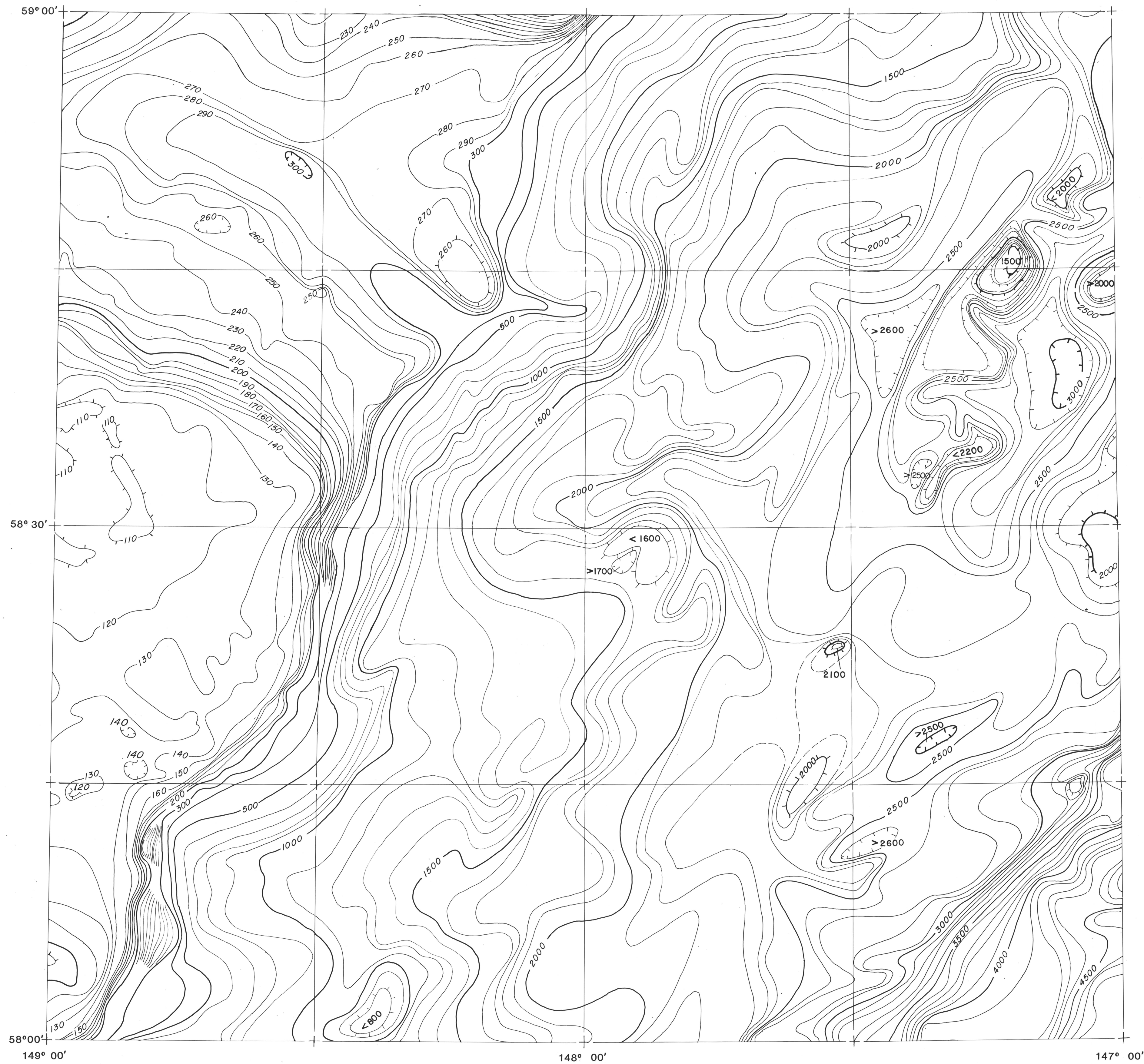


BATHYMETRIC MAP OF THE WESTERN GULF OF ALASKA

by

J.M. Dunlavey, J.R. Childs and R.E. von Huene

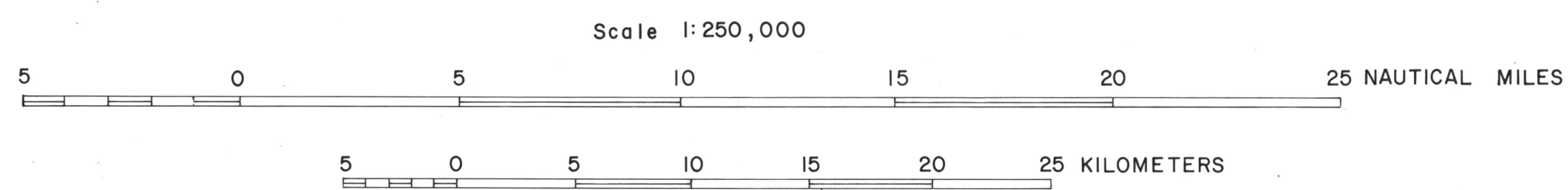
1980



EXPLANATION

Contour interval 10 meters on continental shelf.
A 20 or 25 meter intervals used where space does not permit a 10 meter interval. 100 or 500 meter intervals are used below the 300 meter level depending on the density of data. Dashed lines indicate where data is sparse. Hachures pointing inward indicate enclosed depressions in the topography and hachures pointing outward indicate isolated high areas.

land areas



Offshore contour interval 10 m, 25 m, and 100 m
Onshore contour interval 200 ft with 100 ft contours represented by dotted lines

Albers Conic Equal-Area Projection
Based on parallels 55° N. and 65° N.

