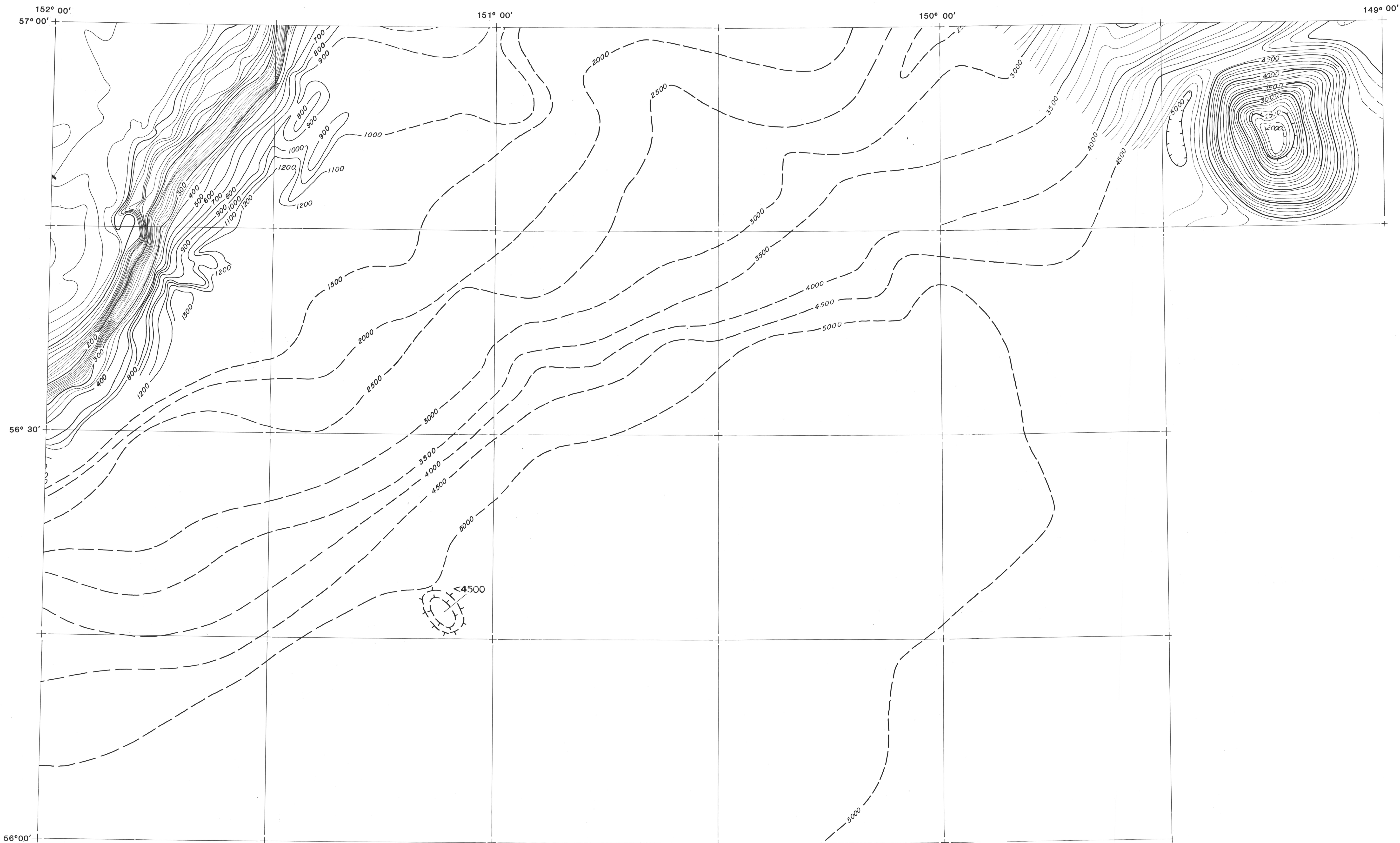


# BATHYMETRIC MAP OF THE WESTERN GULF OF ALASKA

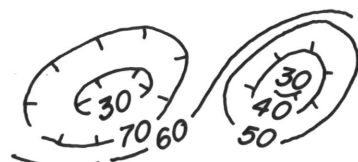
by

J.M. Dunlavey, J.R. Childs and R.E. von Huene

1980

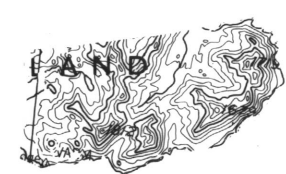


### EXPLANATION

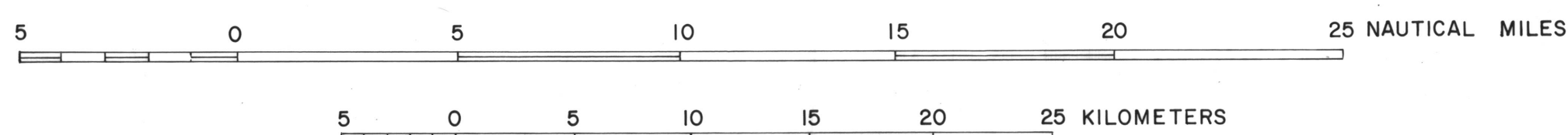


Contour interval 10 meters on continental shelf.  
A 20 or 25 meter intervals used where space does not permit a 10 meter interval. 100 or 500 meter intervals are used below the 300 meter level depending on the density of data. Dashed lines indicate where data is sparse. Hachures pointing inward indicate enclosed depressions in the topography and hachures pointing outward indicate isolated high areas.

land areas

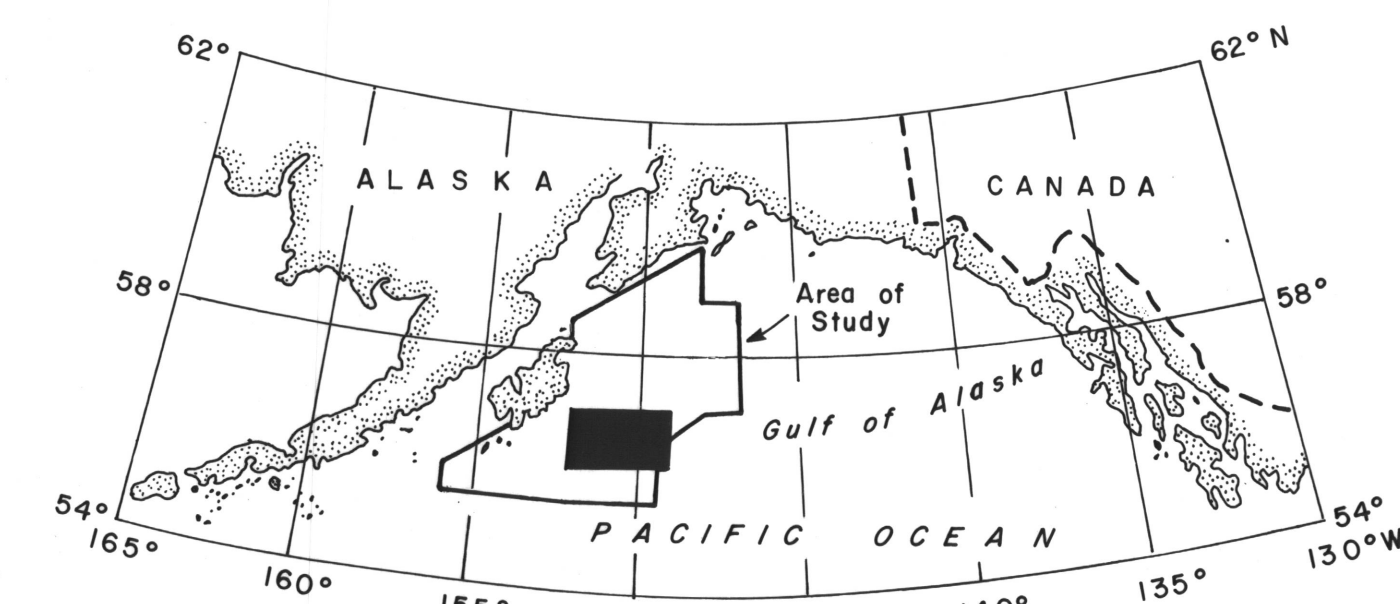


Scale 1:250,000



Offshore contour interval 10 m, 25 m, and 100 m  
Onshore contour interval 200 ft with 100 ft contours represented by dotted lines

Albers Conic Equal-Area Projection  
Based on parallels 55° N. and 65° N.



INDEX MAP