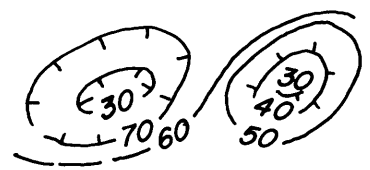
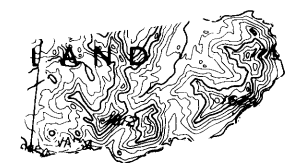


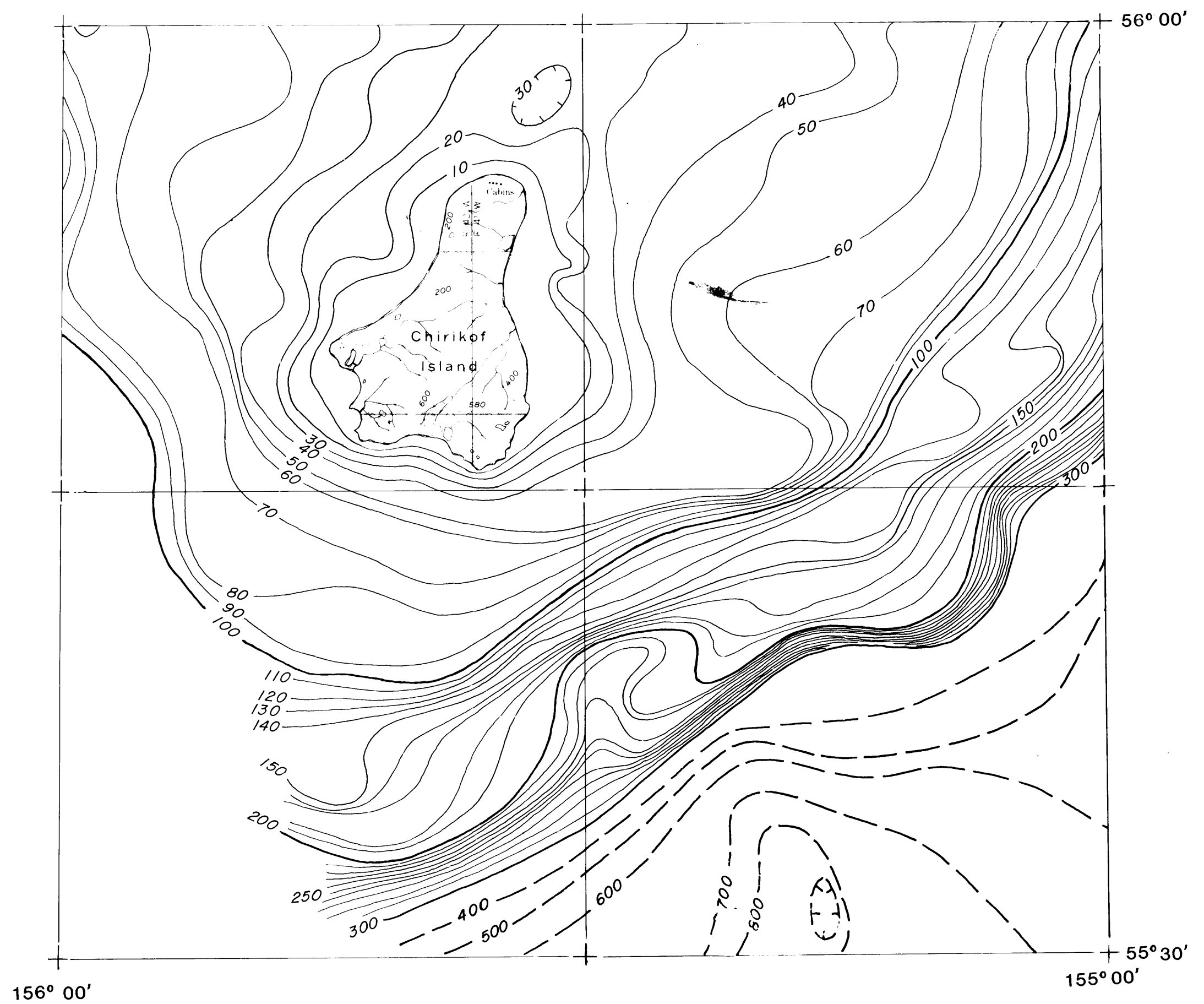
EXPLANATION



Contour interval 10 meters on continental shelf.  
 A 20 or 25 meter intervals used where space does not permit a 10 meter interval. 100 or 500 meter intervals are used below the 300 meter level depending on the density of data. Dashed lines indicate where data is sparse. Hachures pointing inward indicate enclosed depressions in the topography and hachures pointing outward indicate isolated high areas.



land areas



# BATHYMETRIC MAP OF THE WESTERN GULF OF ALASKA

by

J.M. Dunlavey, J.R. Childs, and R.E. von Huene

1980

Offshore contour interval 10 m, 25 m, and 100 m  
 Onshore contour interval 200 ft with 100 ft contours represented by dotted lines

Albers Conic Equal-Area Projection  
 Based on parallels 55° N. and 65° N.

Scale 1:250,000

