



**FILING NO.**

**COMPANY** U.S. GEOLOGICAL SURVEY  
ENGINEERING GEOLOGY BRANCH

**WELL** B-1

**FIELD**

**COUNTY** JOHNSON **STATE** WYOMING

**LOCATION:** SEC. 35 TWP. 51N RGE. 82W

**OTHER SERVICES:**  
GR 3-D  
NNL ES  
FDL

**ELEVATIONS:**  
KB.  
DF. 4600 EST  
GL. 4600 EST

**PERMANENT DATUM** GROUND LEVEL ELEV. 4600 EST  
**LOG MEASURED FROM** GL  
**DRILLING MEASURED FROM** GL

**DATE** 27 MAY 75

**RUN NO.**

**TYPE LOG** CAS

**DEPTH-DRILLER** 450

**DEPTH-LOGGER** 430

**BOTTOM LOGGED INTERVAL** 429

**TOP LOGGED INTERVAL** 429

**TYPE FLUID IN HOLE** MUD

**SALINITY PPM CL.**

**DENSITY LB./GAL.**

**LEVEL** FULL

**MAX. REC. TEMP., -DEG. F.**

**OPR. RIG TIME** 1 1/2 HOUR

**RECORDED BY** MCGEE

**WITNESSED BY** CLIFTON

BORE HOLE RECORD				CASING RECORD			
RUN NO.	BIT	FROM	TO	SIZE	WGT.	FROM	TO
1	2.99"	25'	430'	4"	L.D.	0	25'

**WELL DATA**

ORIGINAL TOTAL DEPTH P.B.T.D.

TYPE WELL

OPEN HOLE SHOT WITH

AMOUNT

AMOUNT

AMOUNT

SPECIAL WELL CONDITIONS:

PURPOSE OF SURVEY

**EQUIPMENT DATA**

TYPE LOG

TOOL MODEL

TOOL SERIAL NO.

TOOL DIAMETER

SPEED FT./MIN.

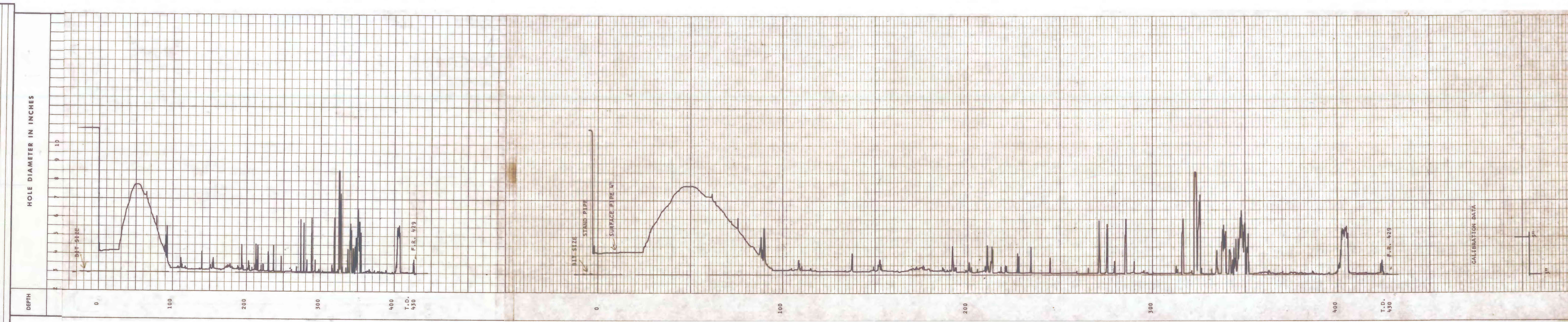
SCALE

MIN. ARM DIAM.

MAX. ARM DIAM.

TRUCK NO.

REMARKS: (N.A. MEANS NOT AVAILABLE)



**CALIBRATION DATA**

COMPANY U.S. GEOLOGICAL SURVEY

WELL B-1

FIELD

LOCATION S 35 T 51-N R 82-W

COUNTY JOHNSON

STATE WYOMING

DATE 27 MAY 75

DRILLER T.D. 450'

BIRDWELL T.D. 450'

BIRDWELL F.R. 429'

ELEV. K.B.

D.P.

O.L. 4600 EST

Birdwell Division

Springfield, Missouri