



**COMPANY** U.S. GEOLOGICAL SURVEY  
**ENGINEERING GEOLOGY BRANCH**

**WELL** B-1

**FIELD**

**COUNTY** JOHNSON **STATE** WYOMING

**LOCATION:**  
 SEC. 35 TWP. 51N RGE. 82W

**PERMANENT DATUM** GROUND LEVEL ELEV. 4600 EST. ELEV. K.B.  
**LOG MEASURED FROM** G.L. 0 FT. ABOVE PERM. DATUM D.F.  
**DRILLING MEASURED FROM** G.L. 4600 EST. G.L.

**DATE** 27 MAY 75

**RUN NO.** 1

**DEPTH-DRILLER** 430  
**DEPTH-LOGGER** 429  
**BTM. LOG INTER.** 425  
**TOP LOG INTER.** 25  
**CASINO-DRILLER** 4 @ 25 @ @ @  
**CASINO-LOGGER** 4 @ 25 @ @ @  
**BIT SIZE** 2.99  
**TYPE FLUID IN HOLE** MUD

**DENS. | VISC.** 65 | ml | ml | ml | ml

**PH FLUID LOSS** ml | ml | ml | ml

**SOURCE OF SAMPLE** MUD PIT

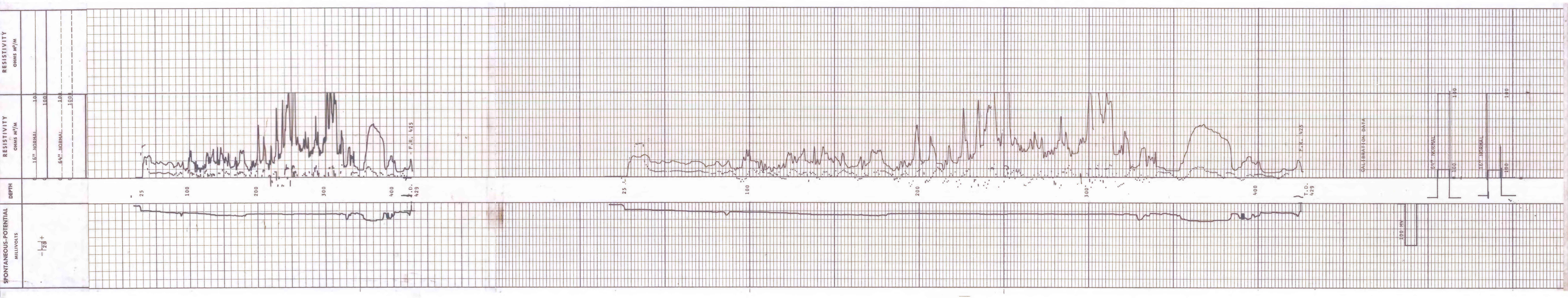
**R<sub>100</sub> @ MEAS. TEMP.** @ 70°F @ @ @ @ @  
**R<sub>100</sub> @ MEAS. TEMP.** @ @ @ @ @ @ @ @ @  
**R<sub>100</sub> @ MEAS. TEMP.** @ @ @ @ @ @ @ @ @  
**SOURCE** R<sub>100</sub> R<sub>100</sub> R<sub>100</sub> R<sub>100</sub> R<sub>100</sub> R<sub>100</sub> R<sub>100</sub> R<sub>100</sub> R<sub>100</sub> R<sub>100</sub>

**R<sub>100</sub> @ B.H.T.** @ @ @ @ @ @ @ @ @  
**TIME SINCE CIRC.** 6 HOURS  
**MAX. REC. TEMP.** 75 °F  
**EQUIP. LOCATION** 346 CLIFTON  
**RECORDED BY** MCGEE  
**WITNESSED BY** OLSEN

THIS HEADING AND LOG CONFORM TO API RP-31 ©

**REMARKS** NA-NOT AVAILABLE

CHANGES IN MUD TYPE OR ADDITIONAL SAMPLES	TYPE LOG	DEPTH	SCALE UP HOLE	SCALE DOWN HOLE
DATE SAMPLE NO.				
DEPTH-DRILLER				
DEPTH-LOGGER				
BTM. LOG INTER.				
TOP LOG INTER.				
CASINO-DRILLER				
CASINO-LOGGER				
BIT SIZE				
TYPE FLUID IN HOLE				
DENS.   VISC.				
PH FLUID LOSS				
SOURCE OF SAMPLE				
R <sub>100</sub> @ MEAS. TEMP.				
R <sub>100</sub> @ MEAS. TEMP.				
R <sub>100</sub> @ MEAS. TEMP.				
SOURCE				
R <sub>100</sub> @ B.H.T.				
TIME SINCE CIRC.				
MAX. REC. TEMP.				
EQUIP. LOCATION				
RECORDED BY				
WITNESSED BY				



**COMPANY** U.S. GEOLOGICAL SURVEY

**WELL** B-1

**FIELD**

**LOCATION** S-35 T 51-N R 82-W

**COUNTY** JOHNSON **STATE** WYOMING

**DATE** 27 MAY 75

**DRILLER** T.D. 430'  
**BIRDWELL** T.D. 429'  
**BIRDWELL** F.R. 425'  
**ELEV.** K.B. D.F. G.L. 4600 EST.

**Birdwell Division**  
 Sintering Service Corporation  
 10000 S. 100th Ave., Omaha, Nebraska 68147  
 PHONE: 402-426-1100