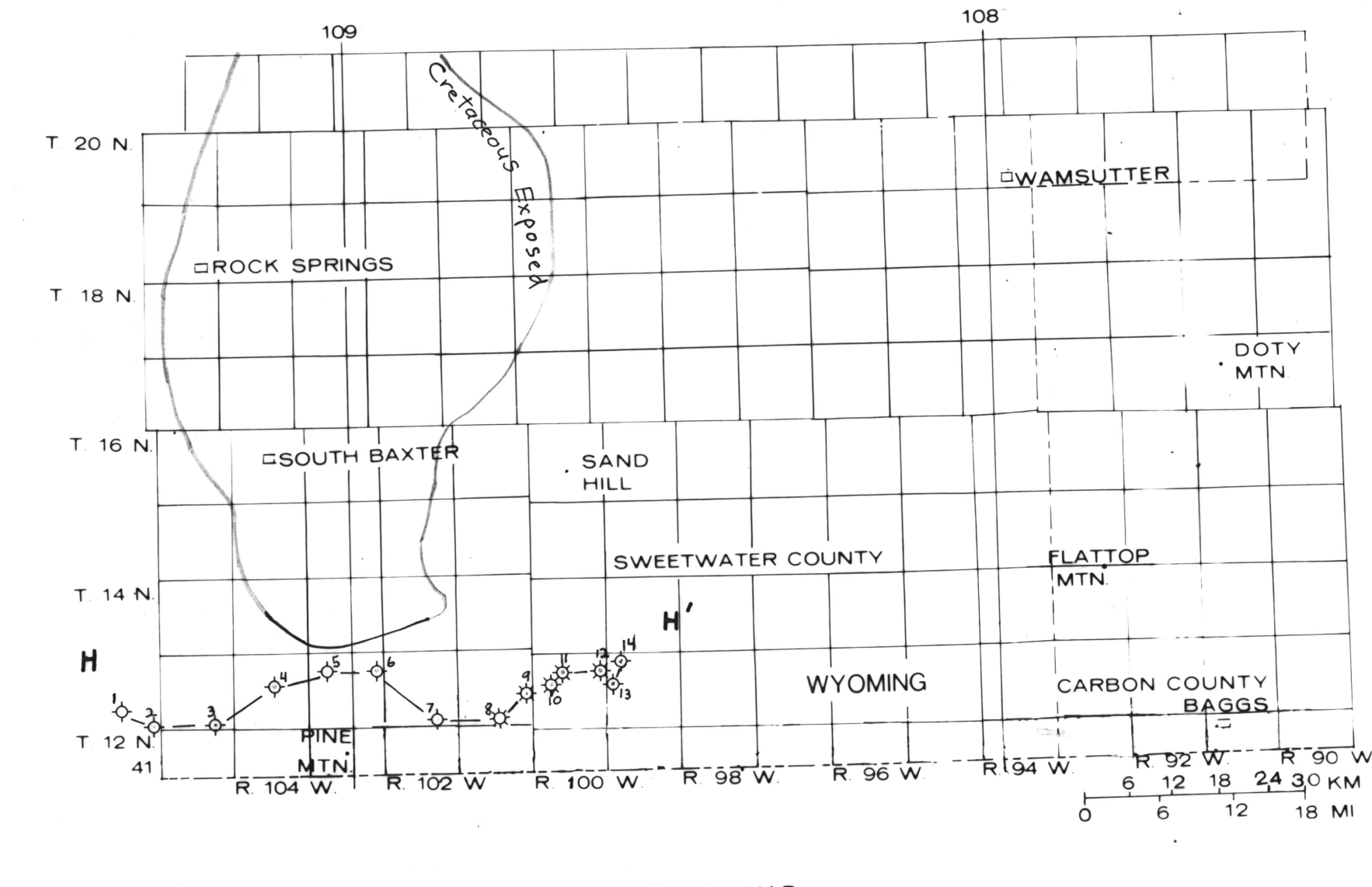
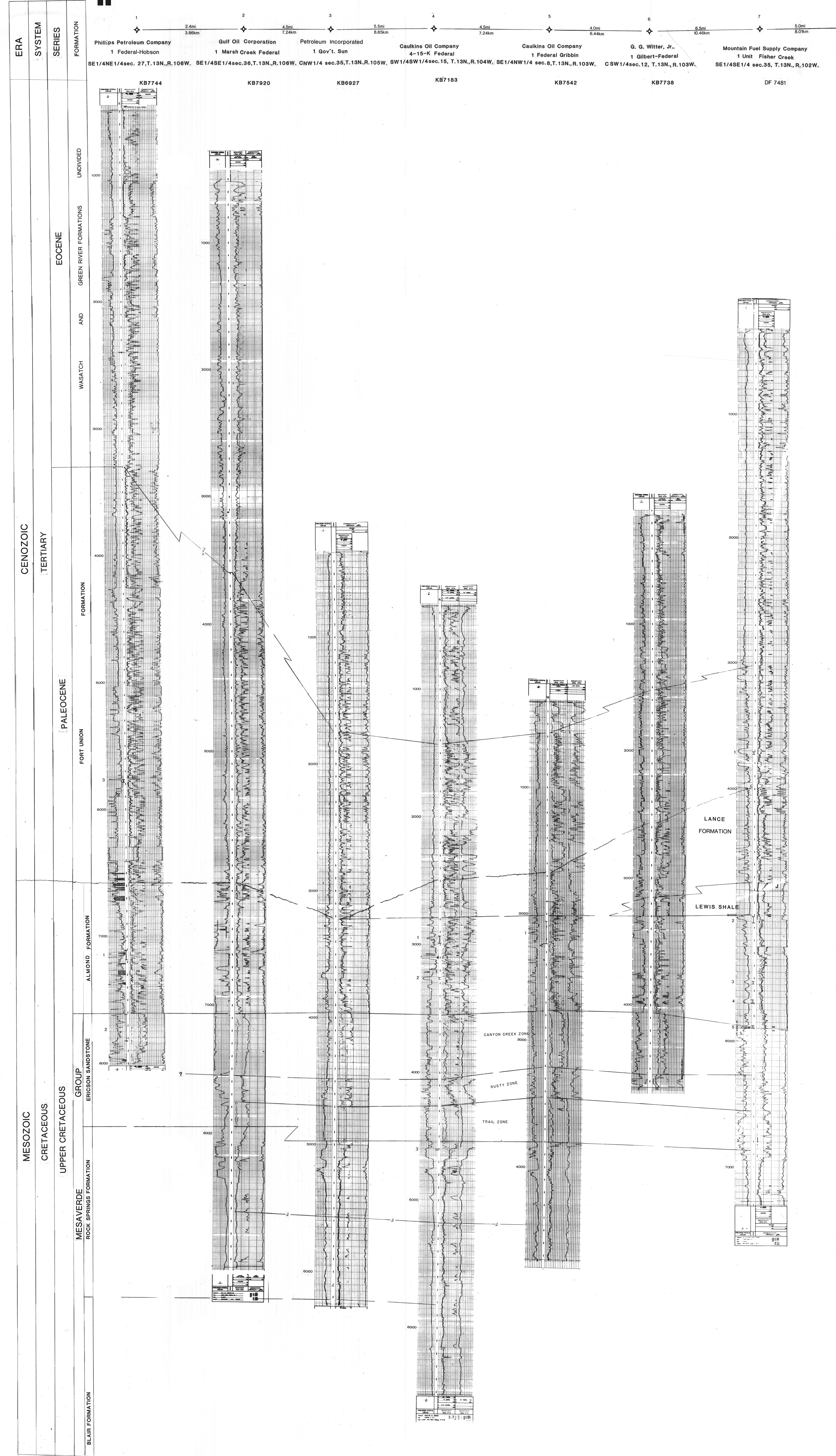
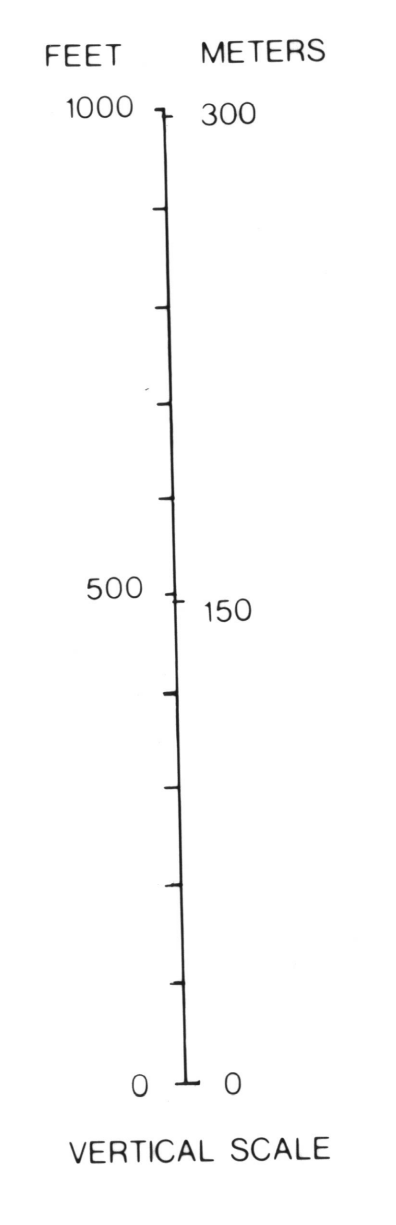


WEST
H



TYPES OF LOGS USED
Left curve - spontaneous potential
Right curve - resistivity and conductance



- EXPLANATION**
- B- Bentonite correlation marker
 - C- Coal Correlation Marker
 - J- Correlatable stratigraphic horizon
 - Unconformity
 - Facies relationship and (or) formation contact, dashed where questionable
 - ? used to indicate higher degree of uncertainty
 - 3| Indicates interval and number of drill stem test in each hole
 - Cored interval
 - KB 6981- Elevation of Kelly bushing in feet
 - DF 7294- Elevation of derrick floor in feet
 - Marginal marks - general environment of deposition for formation
 - Perforation Test-Gross interval
 - Oil well
 - ★ Gas well
 - ◇ Dry and abandoned well

Keith, S. E., 1965, Rock Springs and Blair formations on and adjacent to the Rock Springs Uplift, Sweetwater County, Wyoming, in S. M. Suter, R. H., and Hester, R. E., eds., Sedimentation of Late Cretaceous and Tertiary outcrop, Rock Springs Uplift, Wyoming Geological Association 19th Annual Field Conference Guidebook, p. 43-53.

Smith, J. H., 1961, A summary of stratigraphy and paleontology, Upper Cretaceous and Tertiary groups, northwestern Wyoming, northeastern Utah, and northwestern Colorado, in Willett, G. J., ed., Symposium on Late Cretaceous rocks, Wyoming and adjacent areas, Wyoming Geological Association 16th Annual Field Conference Guidebook, p. 103-113.

Taylor, T. P., 1978a, Preliminary chart showing electric log correlation section 3-3' of some Upper Cretaceous and Tertiary rocks, Washakie basin, Wyoming, U.S. Geological Survey Open-File Report 78-703, 4 pls.

1978b, Preliminary chart showing electric log correlation section 3-3' of some Upper Cretaceous and Tertiary rocks, Washakie basin, Wyoming, U.S. Geological Survey Open-File Report 78-1053, 3 pls.

1978c, Preliminary chart showing electric log correlation section 3-3' of some Upper Cretaceous and Tertiary rocks, Hammett Arch, Wyoming, U.S. Geological Survey Open-File Report 78-726, 1 pl.

1978d, Preliminary chart showing electric log correlation section 3-3' of some Upper Cretaceous and Tertiary rocks, East Flank Rock Springs Uplift, Wyoming, U.S. Geological Survey Open-File Report 78-121, 4 pls.

PRELIMINARY CHART SHOWING ELECTRIC LOG CORRELATION SECTION H-H' OF SOME UPPER CRETACEOUS AND TERTIARY ROCKS, SOUTH END, ROCK SPRINGS UPLIFT, WASHAKIE BASIN, WYOMING

By
THEODORE F. TYLER
1980