

FIGURE 9.--Photograph F: Front of Santo Niño de Praga church on Los Chinos road. Elevation of water above ground was 0.72 meter (2.35 feet).

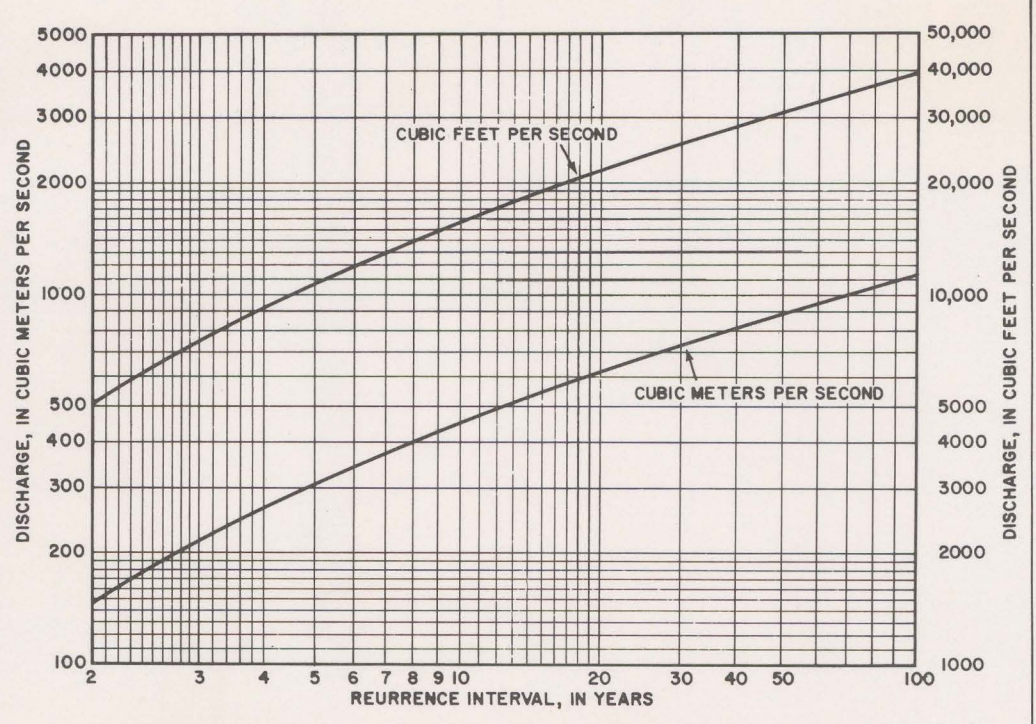


FIGURE 10.--Discharge-frequency relation of station 5012100 of Río Tallaboa at Peñuelas.

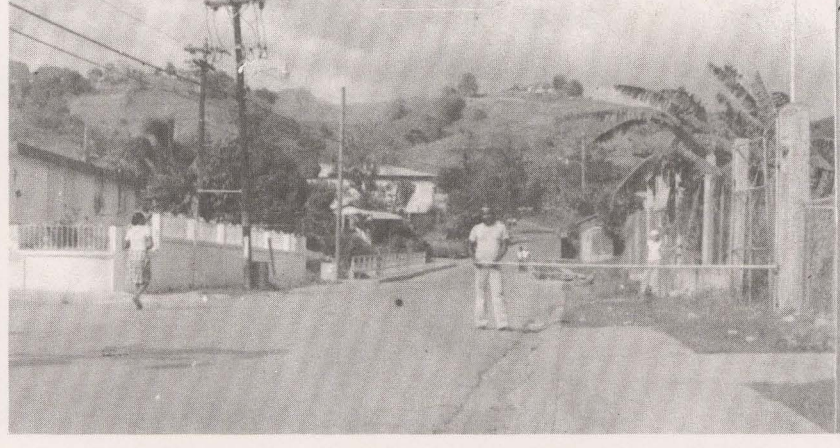


FIGURE 8.--Photograph E: Looking south along Los Chinos road, same as F looking toward the bridge which is shown in the foreground.

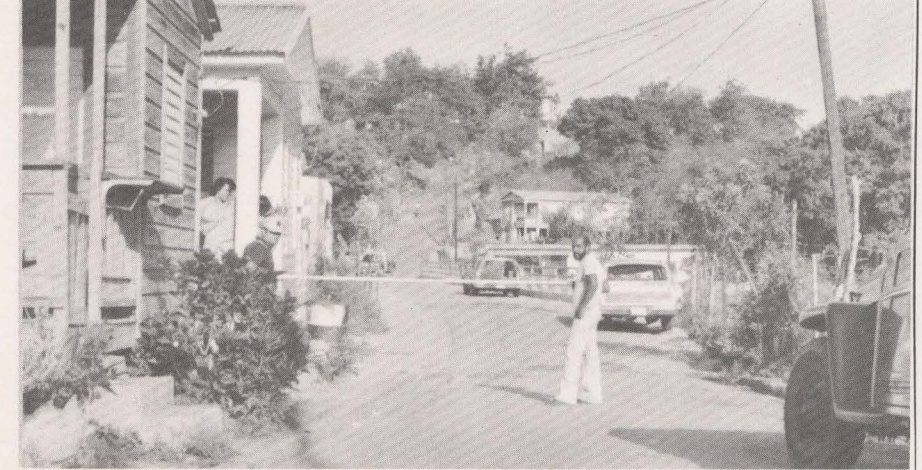


FIGURE 6.--Photograph C: Looking toward the third bridge in a downstream order. Bridge in foreground was destroyed by the September 16, 1975 flood.

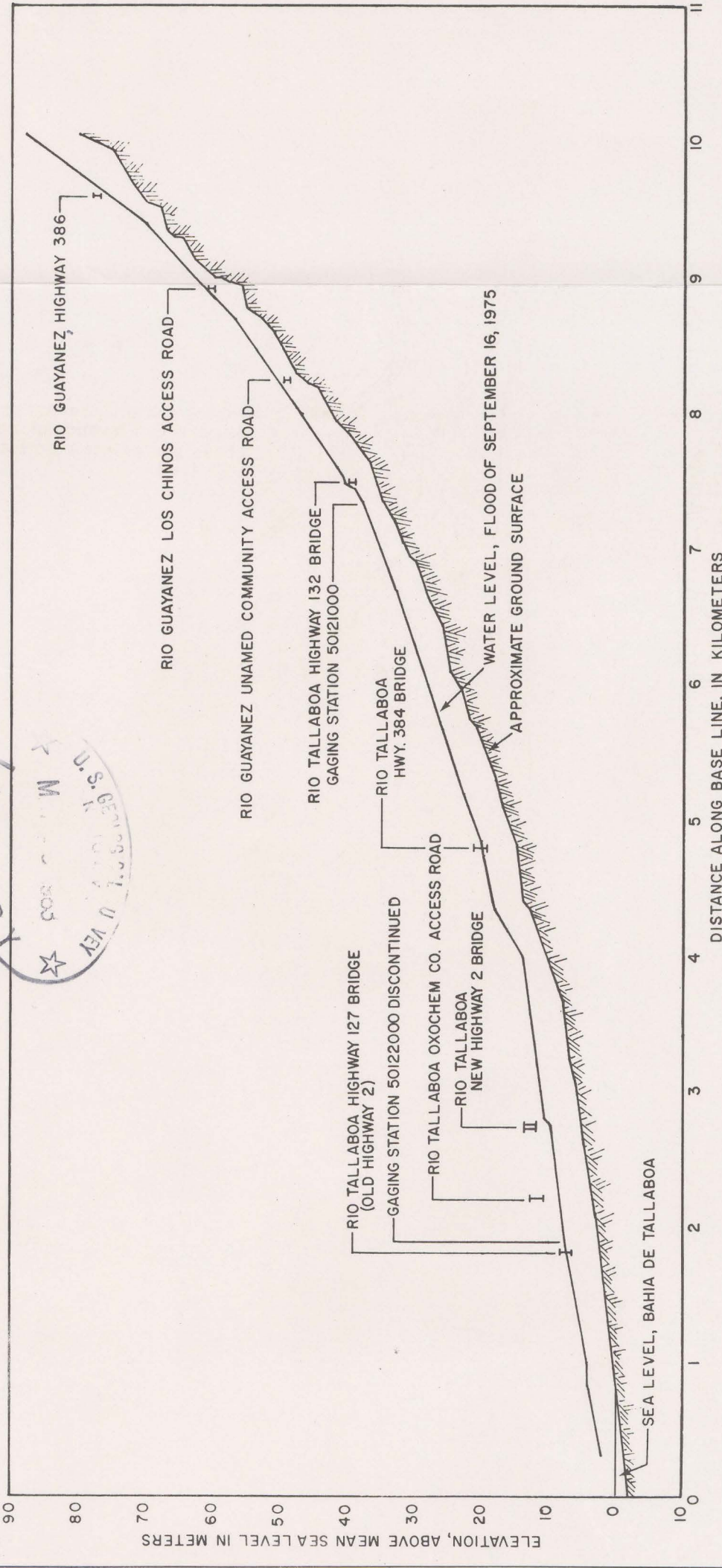


FIGURE 11.--Profile of Río Tallaboa and Río Guayanez during the flood of September 16, 1975. (See map for location of base line.)

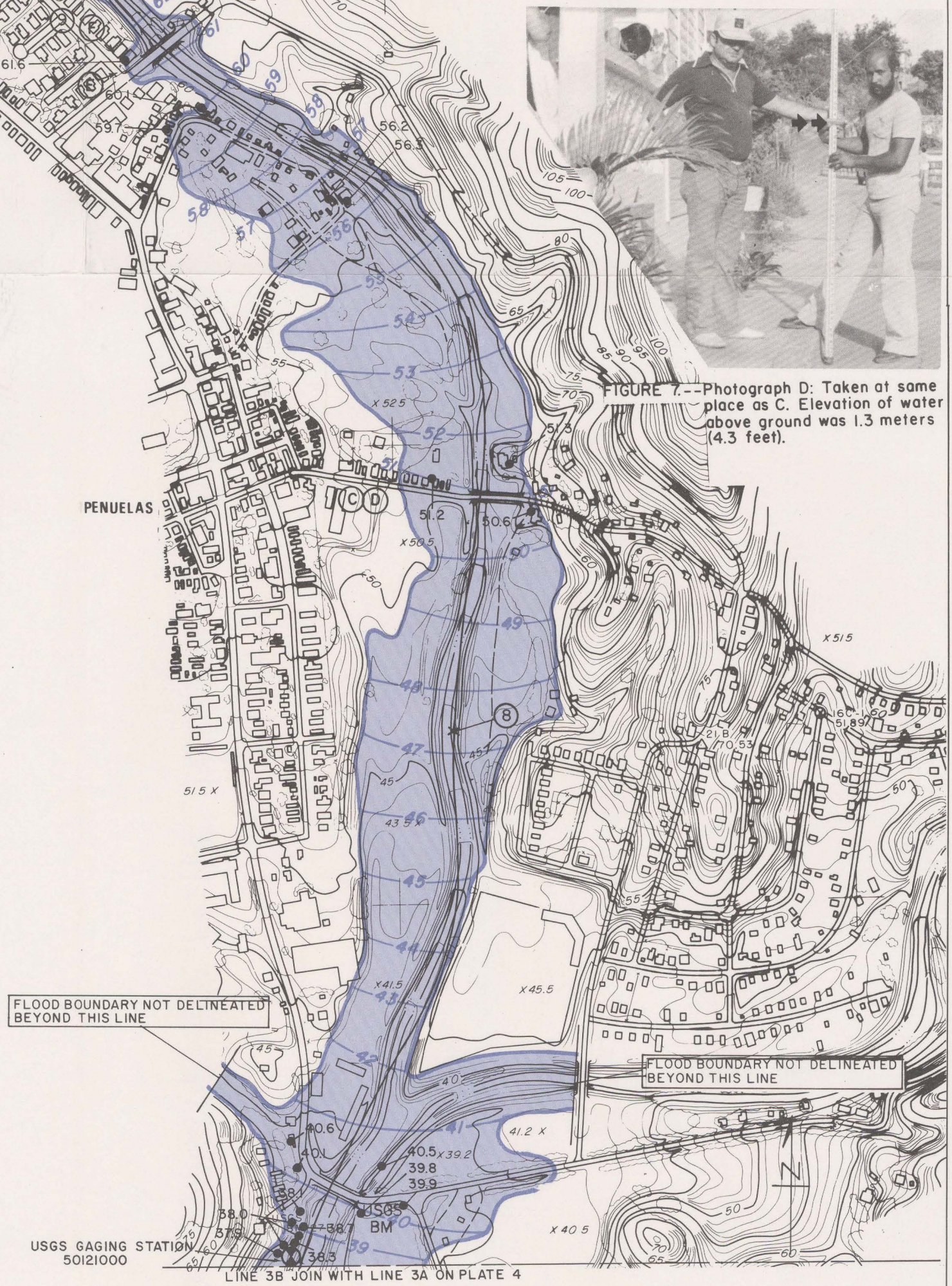


FIGURE 7.--Photograph D: Taken at same place as C. Elevation of water above ground was 1.3 meters (4.3 feet).

LIBRARY
U.S. GEOLOGICAL SURVEY

M(200)
R290
80-1283
5145
c1
M(394)552
T145J
SHEET 5
c.1

FLOODS OF SEPTEMBER 16, 1975 IN THE TALLABOA VALLEY, PUERTO RICO

by
Karl G. Johnson
1981

80-1283

M(394)552
T145J
sheet 5
c.1

M(394)552
T145J
SHEET 5
c.1