

UNITED STATES DEPARTMENT OF THE INTERIOR

GEOLOGICAL SURVEY

GEOPHYSICAL LOGS AND COAL SECTIONS FOR FOUR HOLES DRILLED IN THE
WASATCH PLATEAU COAL FIELD, RILDA CANYON QUADRANGLE,
EMERY AND SANPETE COUNTIES, UTAH

By

Alex J. Donatich

Open-File Report 81-24

1981

This report has not been edited for conformity
with U.S. Geological Survey editorial standards
or stratigraphic nomenclature.

CONTENTS

	Page
Introduction-----	1

ILLUSTRATIONS
[Figures 2-6 in pocket]

Figure 1. Drill-hole location map-----	3
2. Coal sections from drill holes in the Wasatch Plateau coal field	
3-6. Geophysical logs:	
3. Drill hole SLB-1	
4. Drill hole SLB-4	
5. Drill hole SLB-5	
6. Drill hole SLB-7	

TABLE

Table 1. Total depths and cored intervals for four holes drilled in the Wasatch Plateau coal field-----	2
---	---

GEOPHYSICAL LOGS AND COAL SECTIONS FOR FOUR HOLES DRILLED IN THE
WASATCH PLATEAU COAL FIELD, RILDA CANYON QUADRANGLE,
EMERY AND SANPETE COUNTIES, UTAH

By Alex J. Donatich

INTRODUCTION

Between October 2 and November 23, 1980, four holes, for a total of 4,884 ft (fig. 1), were drilled in the Wasatch Plateau coal field. Drilling was done by White Exploration and Development, Milan, N. Mex., under contract no. 14-08-0001-18819, awarded by the U.S. Geological Survey. Two of the holes were partially cored. The purpose of the drilling was to obtain information on the thickness, quality, and extent of the coal in the Cretaceous Blackhawk Formation and on the lithology of the enclosing rocks. The project was part of the Survey's program to evaluate and classify Federal coal lands in the public domain.

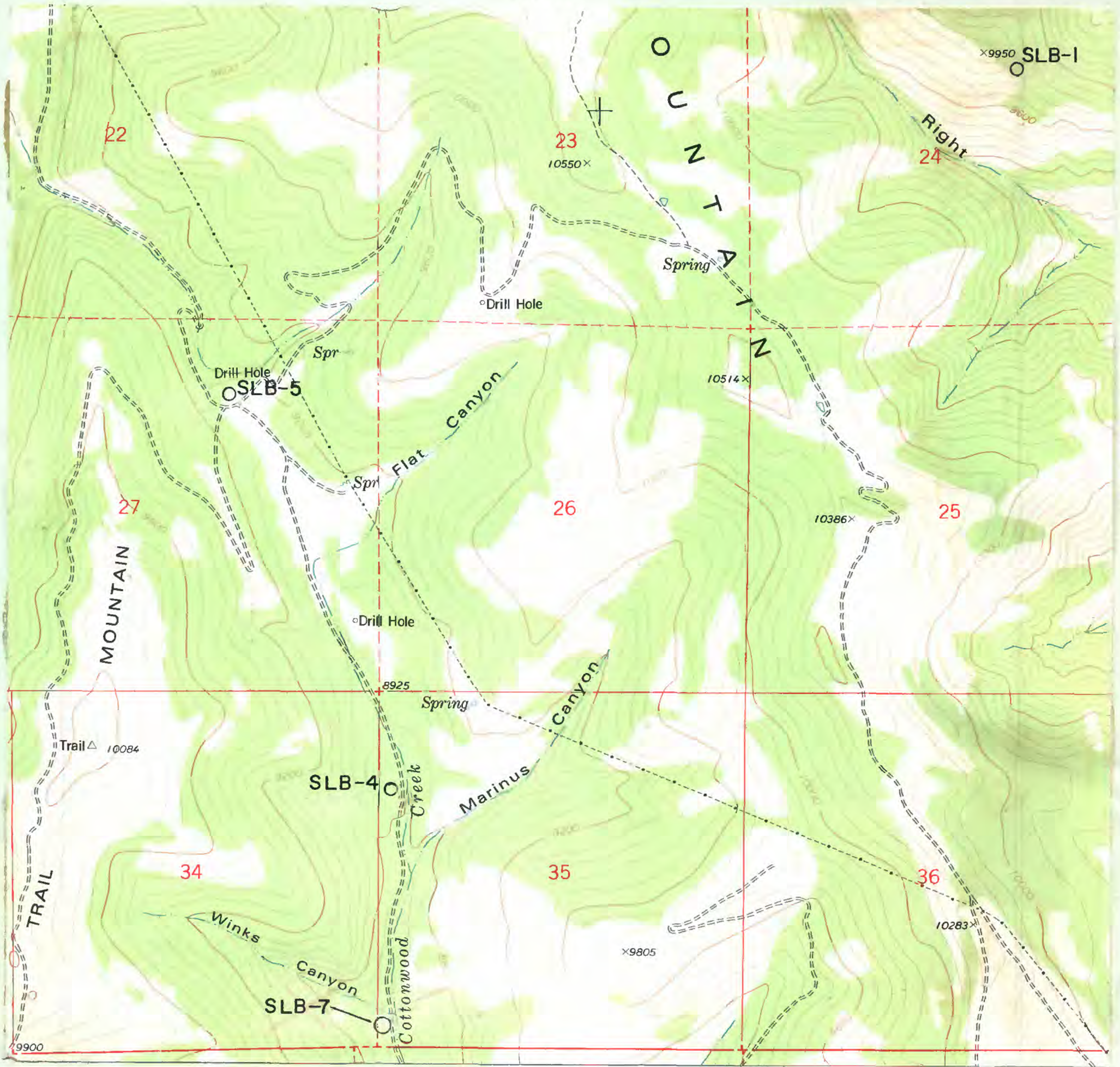
The holes were drilled in the Rilda Canyon quadrangle, Emery and Sanpete Counties, Utah, using a conventional rotary drill rig. Drilling fluid used was mainly foam; air, injected water, and mud were used to a lesser extent. Permission to drill was granted by officials of the Manti-LaSal National Forest, U.S. Forest Service, Price, Utah.

Geophysical logging was done by Dalton Well Logging, Grants, N. Mex. (table 1). Gamma ray, density, caliper, and resistivity logs were run for all holes and an expanded-scale log was run for part of SLB-4 (figs. 3-6). Parts of drill holes SLB-5 and SLB-7 were cored and parts of the core were removed by the Utah Geological and Mineral Survey for methane content analysis. Coal sections from drill holes in the lower part of the Blackhawk Formation are shown in figure 2.

All measurements are in feet; to convert to meters, multiply by 0.3048.

Table 1.--Total depths and cored intervals for four holes drilled in the
Wasatch Plateau coal field, Emery and Sanpete Counties, Utah

Drill hole No.	Total depth drilled (feet)	Total depth logged (feet)	Cored interval (feet)	Expanded-scale log interval (feet)
SLB-1	1,880	1,850	---	---
SLB-4	981	981	---	860-890
SLB-5	1,250	1,238	1,134.4- 1,1169.3	
SLB-7	773	773	693.8- 724	---



T. 16 S.

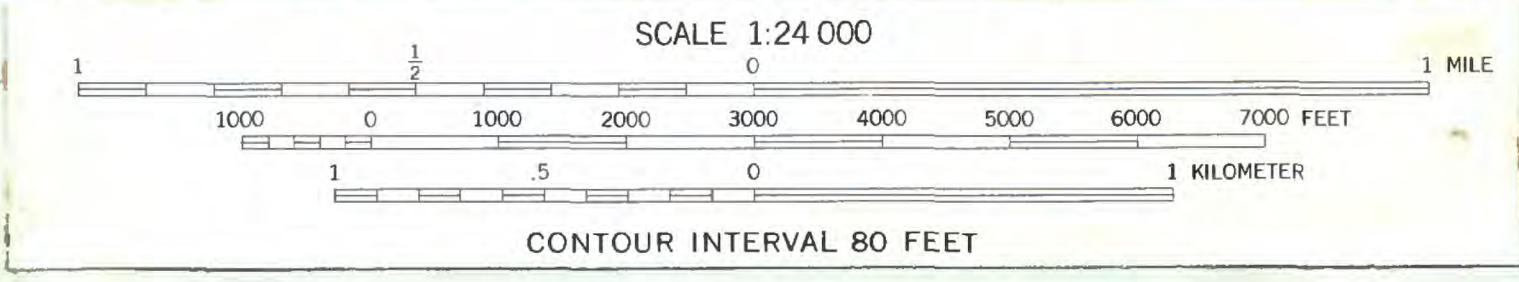


Figure 1.--Drill-hole locations in the Wasatch Plateau coal field, Rilda Canyon quadrangle, Emery and Sanpete Counties, Utah.