




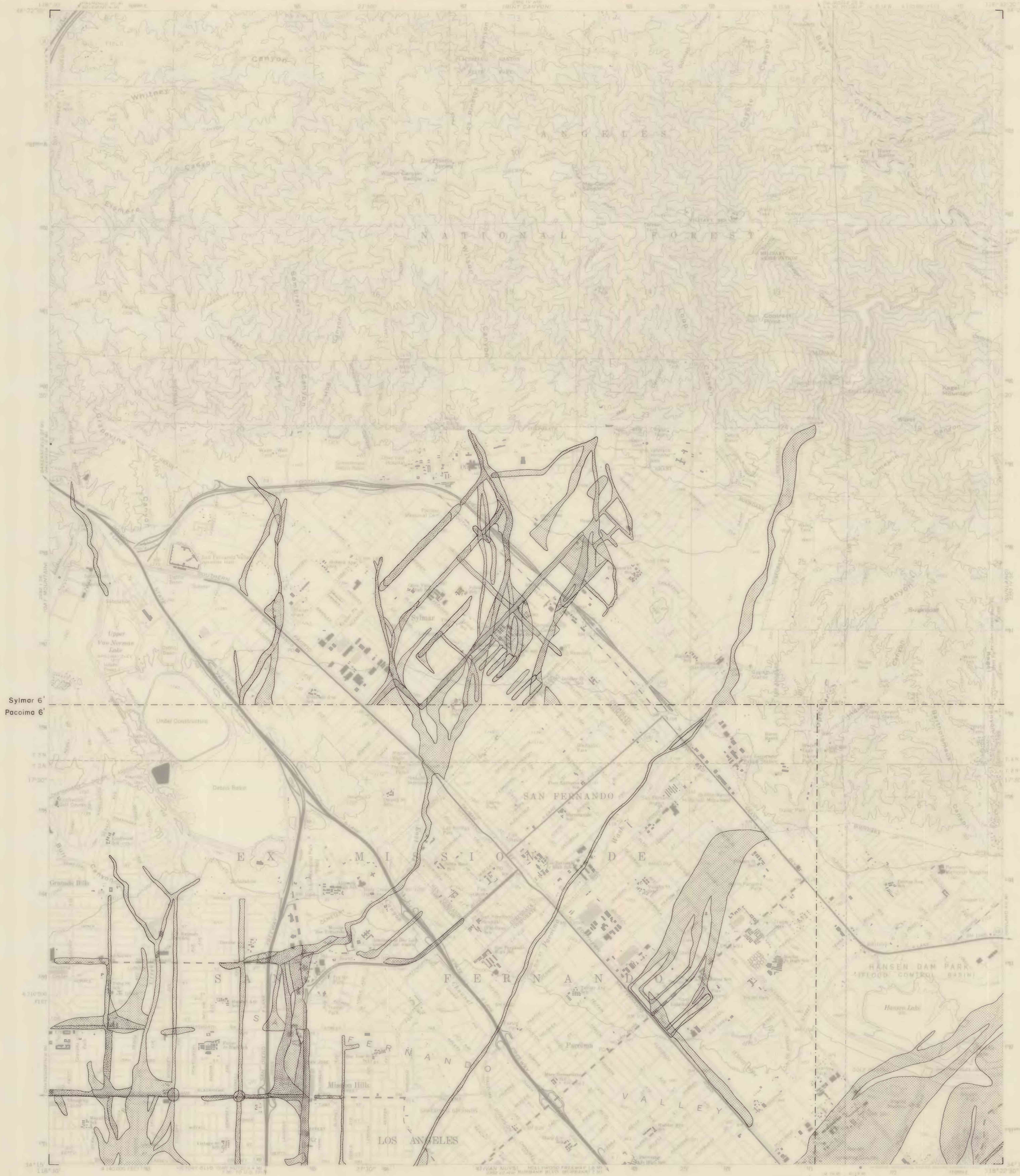


STATE OF CALIFORNIA  
DEPARTMENT OF WATER RESOURCES

SAN FERNANDO 7.5'

Explanation

- patterns indicate incidence of flooding
-  area flooded one time, in the year 1934, 1938, 1941, 1943, 1944 or 1956
  -  area flooded two times, in the years 1934 and 1938, 1934 and 1941, 1934 and 1943, 1934 and 1944, 1934 and 1956, 1938 and 1941, 1938 and 1943, 1938 and 1944, 1941 and 1943, 1941 and 1944, or 1941 and 1956
  -  area flooded three times, in the years 1934, 1938 and 1941, 1934, 1938 and 1943, 1934, 1938 and 1944, 1934, 1941 and 1943, 1934, 1941 and 1956, 1934, 1943 and 1944, 1938, 1941 and 1944, 1938, 1943 and 1944, or 1941, 1943 and 1944
  -  area flooded four times, in the years 1934, 1938, 1941 and 1944, 1934, 1941, 1943 and 1944, or 1934, 1938, 1943 and 1944
  -  area flooded five times, in the years 1934, 1938, 1941, 1943 and 1944
- USGS 6' topographic quadrangle boundary; base for LACFCD data



Sylmar 6'  
Pacoima 6'

Pacoima 6' Sunland 6'

Base from U.S. Geological Survey San Fernando, 1966.

MAP OF HISTORIC FLOODING, 1934 to 1956, IN THE SAN FERNANDO VALLEY, LOS ANGELES COUNTY, CALIFORNIA  
SAN FERNANDO QUADRANGLE

BY  
ELLEN J. KING, JOHN C. TINSLEY AND RONALD F. PRESTON

U. S. Geological Survey  
OPEN-FILE REPORT  
This report is preliminary and has not been edited or reviewed for conformity with Geological Survey standards and nomenclature