

CORRELATION OF MAP UNITS

Qu	Undifferentiated alluvium	QUATERNARY
Tv	Volcanic rock	TERTIARY
R(P)Pa	Undifferentiated sedimentary rock	TREASISC(?) AND PERMIAN
PPbm(?)	Bingham Mine(?) Formation	PERMIAN AND PENNSYLVANIAN
Pbp	Bitterfield Peaks Formation	
Pel	Lower Ogirrh Group	
PMmc	Manning Canyon Shale	PENNSYLVANIAN AND MISSISSIPPIAN
Mgb	Great Blue Limestone	

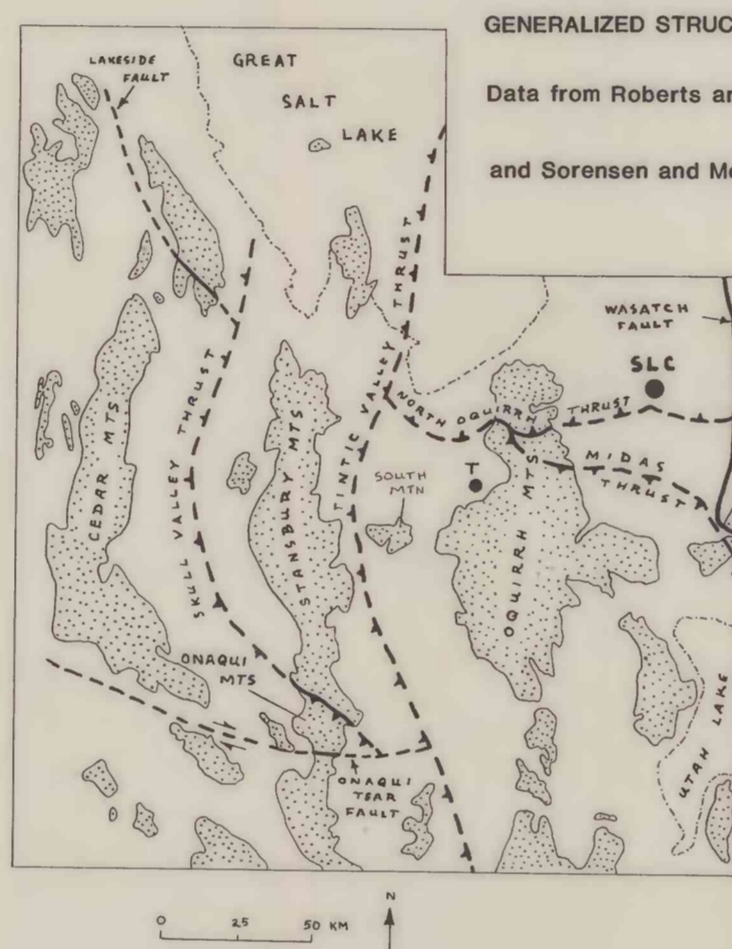
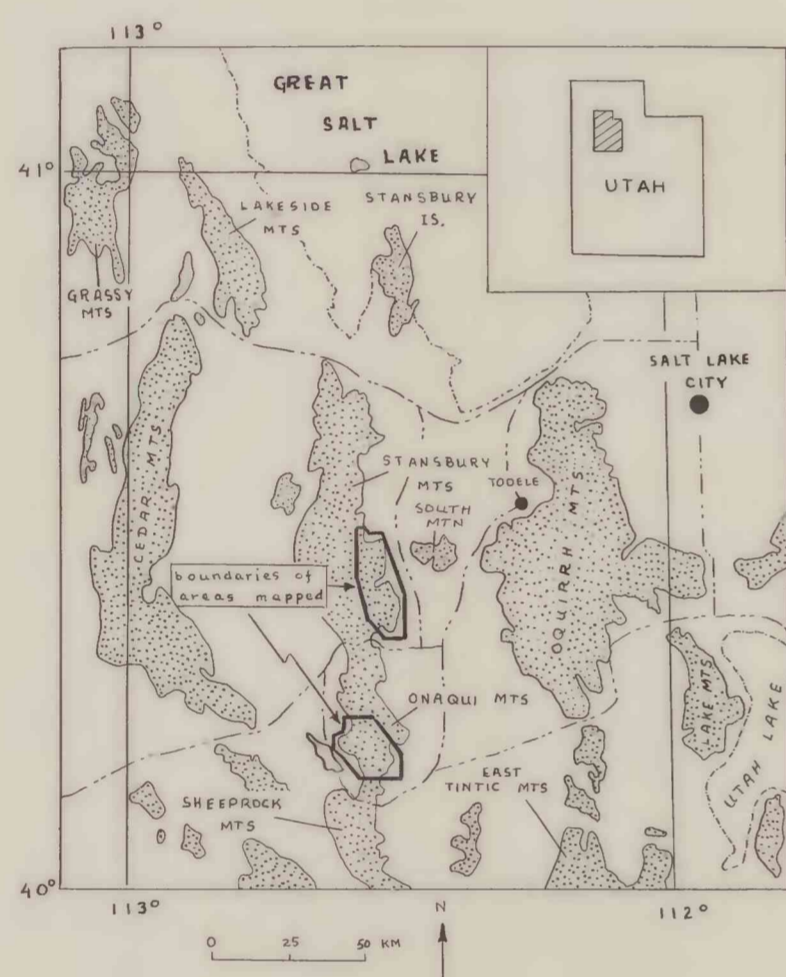
EXPLANATIONS

- Contact - dashed where inferred or approximately located, queried where uncertain
- Fault - dashed where inferred, dotted where concealed; bar and ball on downthrown block
- Thrust fault - dashed where inferred, dotted where concealed; sawteeth on upper plate
- Shows relative motion on faults
- Anticline
- Overturned anticline
- Syncline
- Overturned syncline
- Approximate boundary between upper and lower members of the Bingham Mine(?) Formation
- Bedding trace
- Fossil locality (numbers keyed to tables 1 and 2)
- Strike and dip of beds
- inclined
- vertical
- overturned



GEOLOGY OF THE SOUTHEASTERN STANSBURY MOUNTAINS

parts of geology modified from Rigby (1958), Moore and Sorensen (1979), and Jordan and Allmendinger (1979)



GENERALIZED STRUCTURAL MAP SHOWING SOME MAJOR FAULTS  
Data from Roberts and others (1965), Morris and others (1977), and Sorensen and Moore (unpub. data)

EXPLANATION

- High-angle fault - dashed where inferred or concealed; arrows show relative movement on tear fault
- Thrust fault - dashed where inferred or concealed; sawteeth on upper plate



GEOLOGY OF THE SOUTHERN ONAQUI MOUNTAINS

modified from Moore and others (1978)

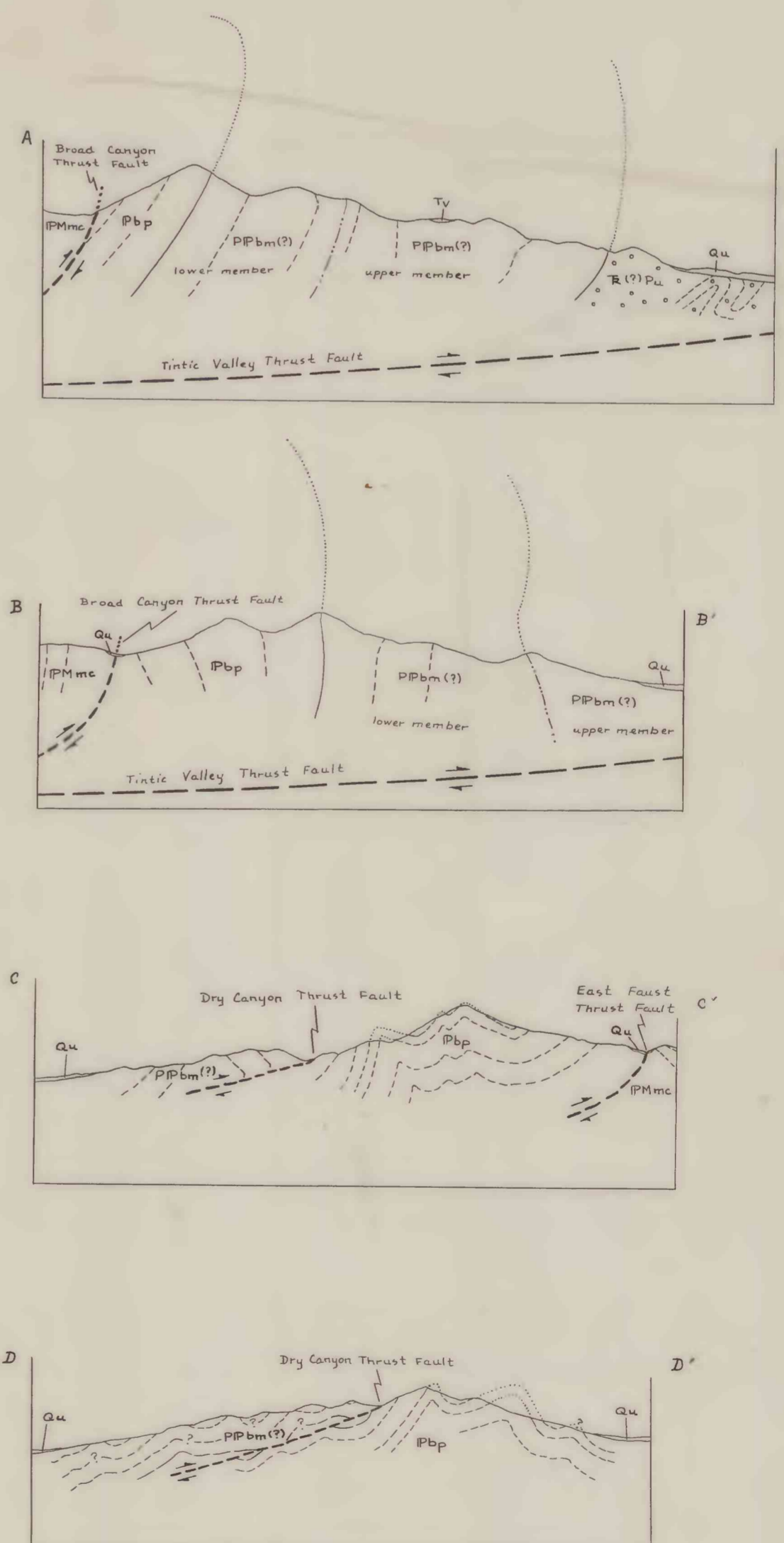
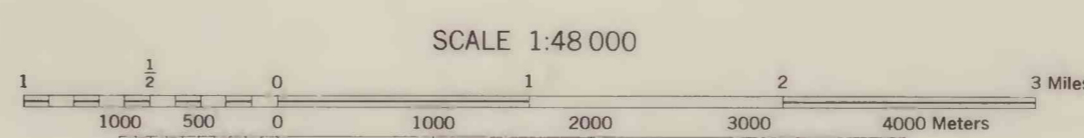


PLATE 1. GEOLOGIC MAPS AND SECTIONS OF THE SOUTHEASTERN STANSBURY MOUNTAINS AND SOUTHERN ONAQUI MOUNTAINS, TOOELE COUNTY, UTAH

by

R. A. Armin and W. J. Moore

1981



Topographic base from the Deseret 15' Quadrangle and Onaqui Mountains South 7 1/2' Quadrangle

This map is preliminary and has not been reviewed for conformity with U.S. Geological Survey editorial standards.