

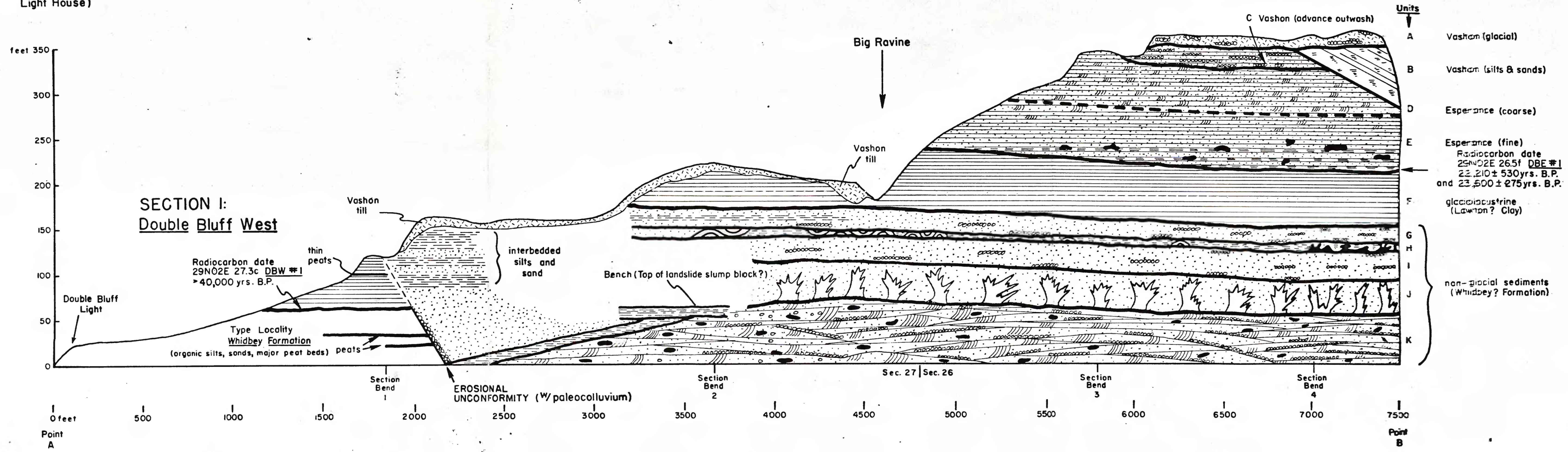
Geologic Section: Double Bluff to Useless Bay

WEST  
(Double Bluff  
Light House)

SECTION 2: Double Bluff East

EAST (West side of  
Useless Bay)

96



SECTION 1: Double Bluff West

Radiocarbon date  
29N02E 27.3c DBW #1  
> 40,000 yrs. B.P.

Type Locality  
Whidbey Formation  
(organic silts, sands, major peat beds)

Vashon till

thin peats

interbedded  
silts and  
sand

Bench (Top of landslide slump block?)

Sec. 27 | Sec. 26

EROSIONAL  
UNCONFORMITY (w/ paleocolluvium)

C Vashon (advance outwash)

- | Units | Description   |
|-------|---|
| A     | Vashon (glacial)  |
| B     | Vashon (silts & sands)  |
| D     | Esperance (coarse)  |
| E     | Esperance (fine)<br>Radiocarbon date<br>29N02E 26.5f DBE #1<br>23,210 ± 530 yrs. B.P.<br>and 23,500 ± 275 yrs. B.P. |
| F     | glaciolacustrine<br>(Lawton? Clay)  |
| G     | non-glacial sediments<br>(Whidbey? Formation)   |
| H     |   |
| I     |   |
| J     |   |
| K     |   |

Point A

Point B