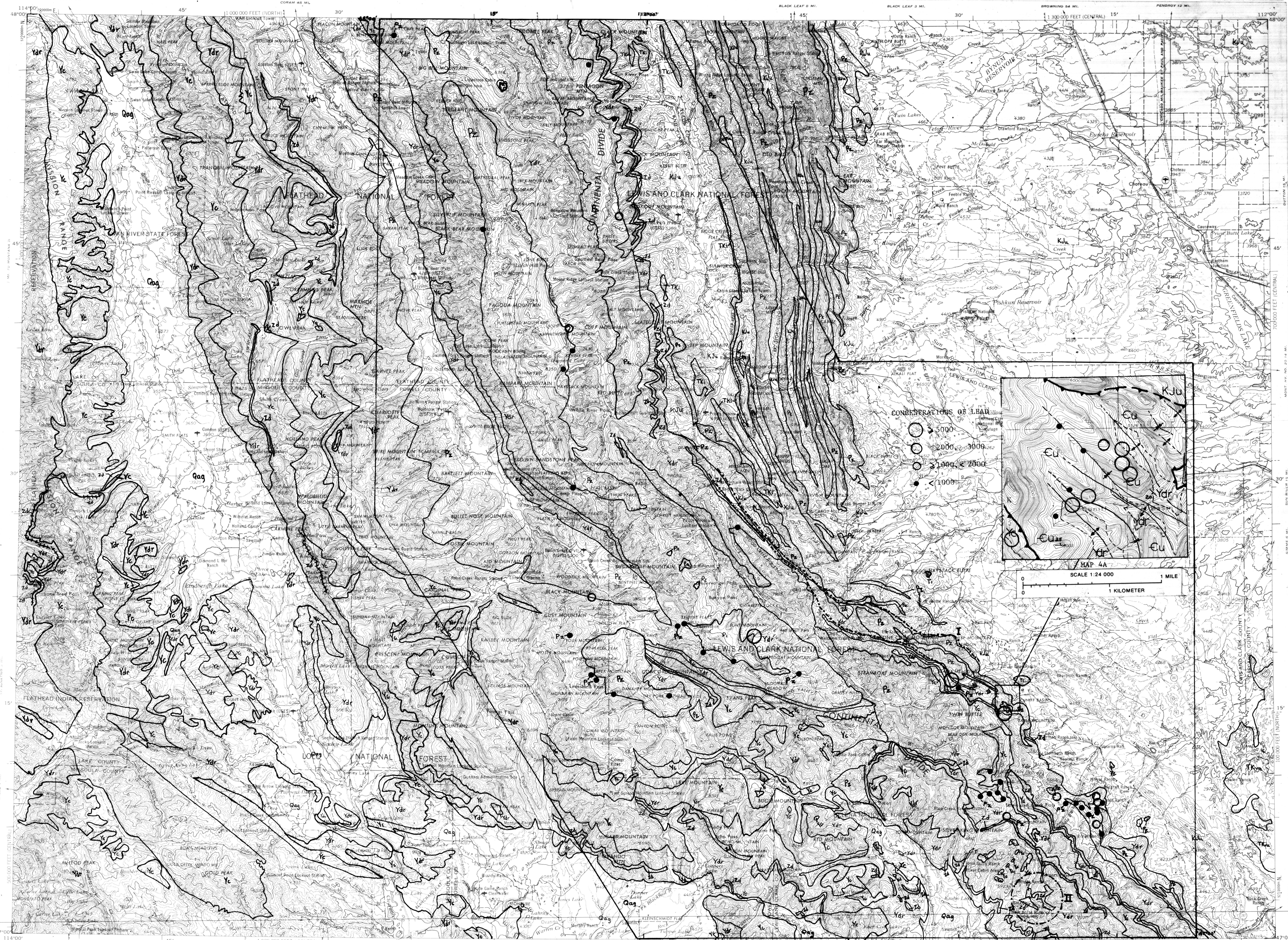
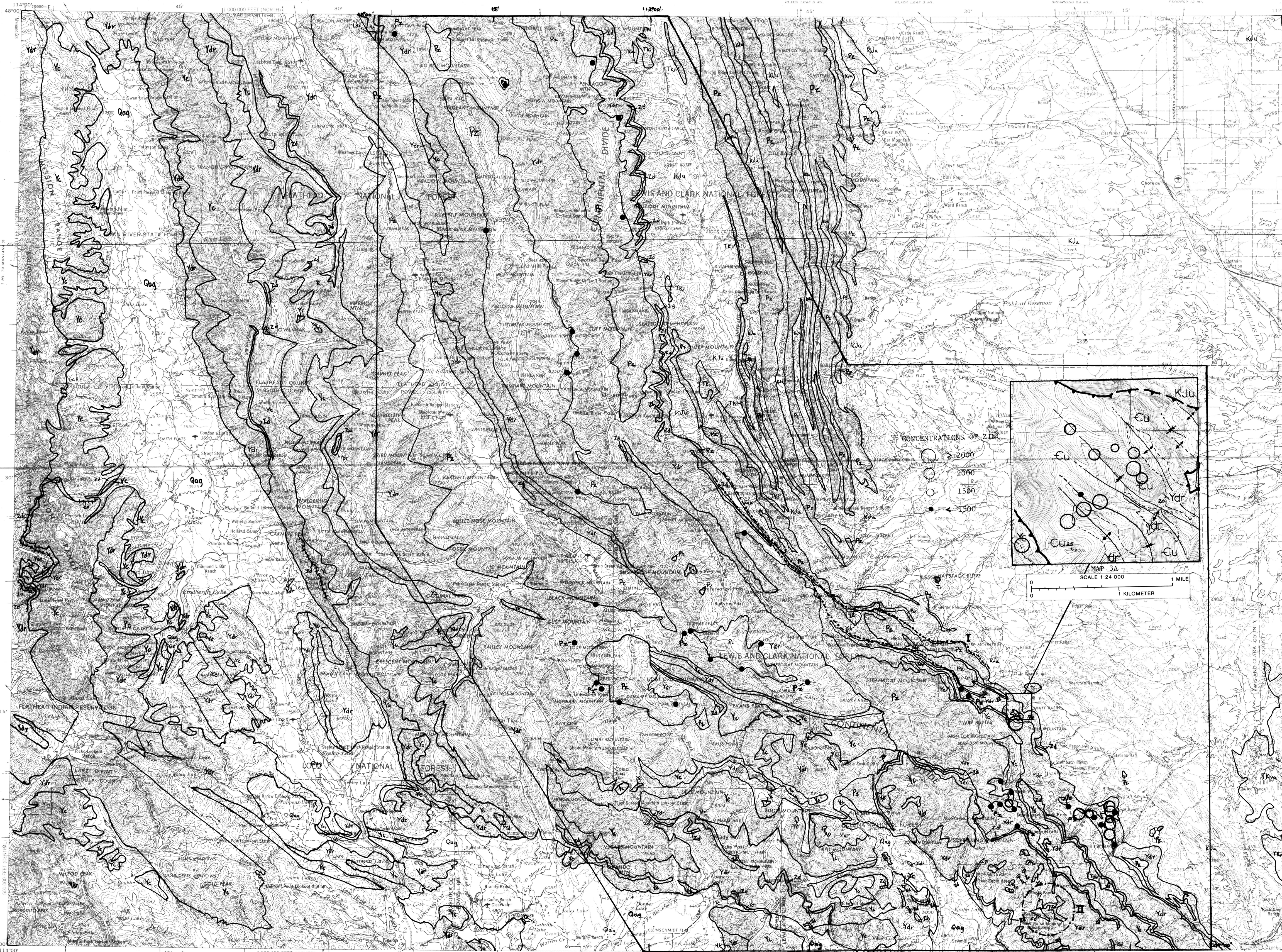


MAPS 2 AND 2A-ABUNDANCE AND DISTRIBUTION OF COPPER IN THE OXALIC ACID-SOLUBLE IRON AND MANGANESE OXIDE FRACTION OF SAMPLES OF FLATHEAD SANDSTONE



MAPS 4 AND 4A-ABUNDANCE AND DISTRIBUTION OF LEAD IN THE OXALIC ACID-SOLUBLE IRON AND MANGANESE OXIDE FRACTION OF SAMPLES OF FLATHEAD SANDSTONE



MAPS 3 AND 3A-ABUNDANCE AND DISTRIBUTION OF ZINC IN THE OXALIC ACID-SOLUBLE IRON AND MANGANESE OXIDE FRACTION OF SAMPLES OF FLATHEAD SANDSTONE

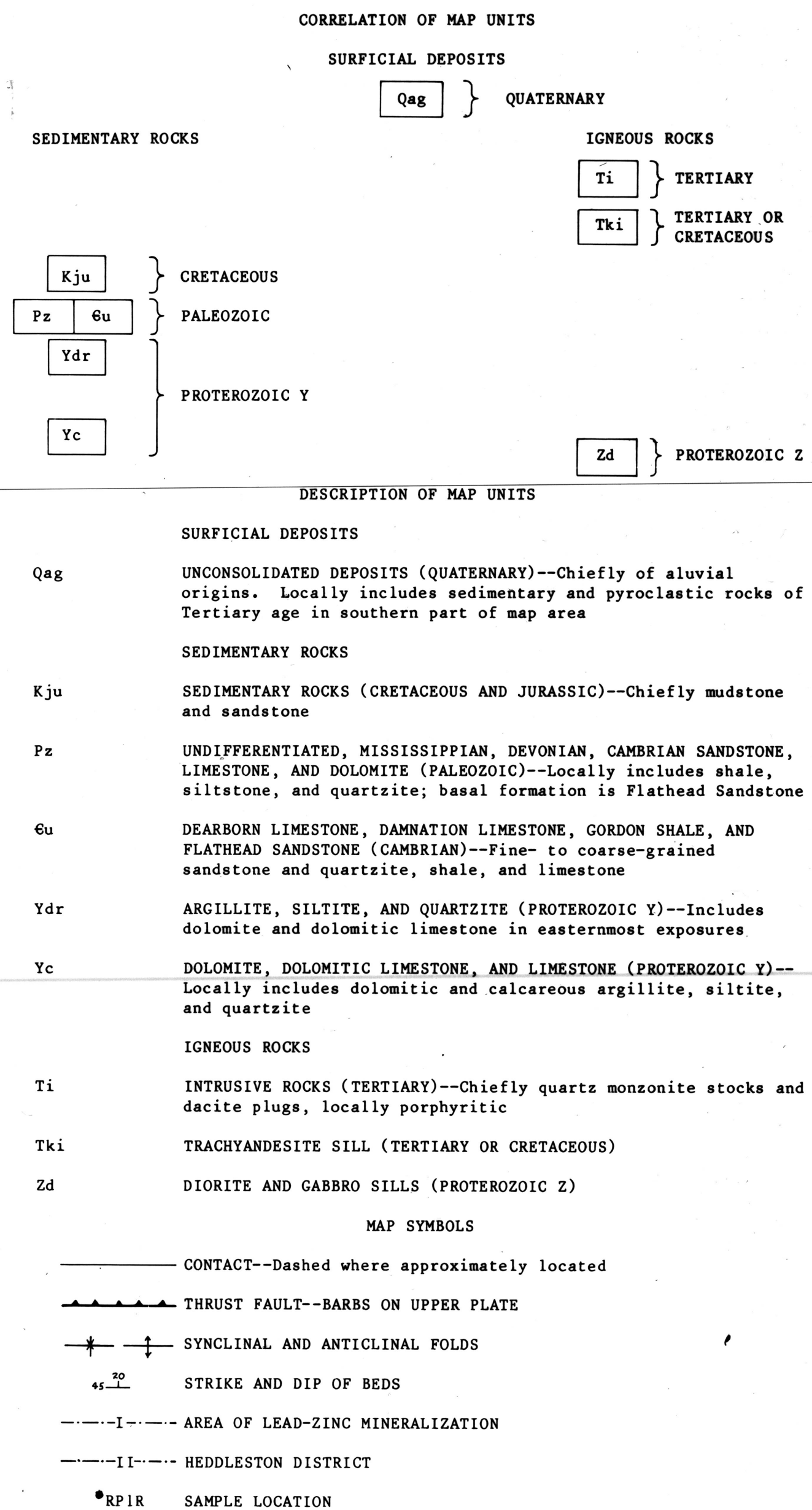


Table 1.—Concentrations of selected elements in 82 untreated samples of Flathead Sandstone, and their concentrations in the oxalic acid-soluble iron and manganese oxide fractions of the samples, Choteau quadrangle, Montana.																				
(All values reported in parts per million except Pb for sample 79-108 which is greater than 21. Lower limits of determination given in parentheses (5) at the top of table. N, not detected at lower limit; L, detected but less than lower limit; R, concentrations in the untreated rock samples; O, concentrations in oxide fractions. Samples analyzed spectrographically by R. J. Grimes.)																				
Sample no.	Cu (5)		Pb (10)		Zn (200)		Ag (5)		Al (200)		Sb (100)		Cd (20)		Mn (5)		V (50)		Th (100)	
	R	O	R	O	R	O	R	O	R	O	R	O	R	O	R	O	R	O	R	O
RP 18	7	1000	L	300	N	500	N	5	N	N	N	N	N	N	N	N	N	N	N	N
RP 24	15	700	L	300	N	500	N	5	N	N	N	N	N	N	N	N	N	N	N	N
RP 48	15	10000	20	15000	N	3000	N	15	N	3000	N	1500	N	70	N	50	N	70	N	150
RP 78	10	7000	70	20000	N	5000	N	2	N	1000	N	700	N	100	N	20	N	50	N	100
RP 118	L	300	L	200	N	500	N	N	N	N	N	N	N	N	N	N	N	N	N	N
RP 128	L	300	L	500	N	2000	N	N	N	N	N	N	N	N	N	N	N	N	N	N
RP 138	7	1500	L	2000	N	1500	N	1	N	N	N	N	N	N	N	N	N	N	N	N
RP 148	20	5000	100	15000	N	2000	N	7	N	2000	N	N	N	N	N	N	N	N	N	N
RP 158	10	700	200	20000	N	1500	N	2	N	300	N	N	N	N	N	N	N	N	N	N
RP 168	7	500	150	1000	N	2000	N	5	N	300	N	N	N	N	N	N	N	N	N	N
RP 178	5	2000	L	1000	N	700	N	N	N	N	N	N	N	N	N	N	N	N	N	N
RP 208	7	300	L	500	N	1500	N	N	N	N	N	N	N	N	N	N	N	N	N	N
RP 208A	5	700	N	700	N	1000	N	N	N	N	N	N	N	N	N	N	N	N	N	N
RP 208B	5	1500	N	1000	N	1000	N	2	N	N	N	N	N	N	N	N	N	N	N	N
RP 208C	7	1000	L	700	N	1500	N	2	N	N	N	N	N	N	N	N	N	N	N	N
RP 228	10	1500	L	700	N	1500	N	2	N	N	N	N	N	N	N	N	N	N	N	N
RP 248	30	7000	N	300	N	1500	N	5	N	300	N	N	N	N	N	N	N	N	N	N
RP 258	10	3000	L	500	N	700	N	5	N	1000	N	N	N	N	N	N	N	N	N	N
RP 258A	L	300	N	150	N	2000	N	N	N	N	N	N	N	N	N	N	N	N	N	N
RP 268	10	1000	L	1000	N	2000	N	1	N	N	N	N	N	N	N	N	N	N	N	N
RP 278	10	1500	N	1000	N	2000	N	1	N	200	N	N	N	N	N	N	N	N	N	N
RP 298	10	1500	N	1000	N	2000	N	1	N	200	N	N	N	N	N	N	N	N	N	N
RP 328	30	5000	1000	15000	N	10000	N	2	N	2000	N	150	N	30	N	20	N	50	N	200
RP 348	15	2000	300	20000	N	10000	N	15	N	700	N	150	N	20	N	50	N	70	N	100
RP 378	10	1500	N	1000	N	2000	N	1	N	200	N	N	N	N	N	N	N	N	N	N
RP 398	10	1500	N	1000	N	2000	N	1	N	200	N	N	N	N	N	N	N	N	N	N
RP 418	10	1500	N	1000	N	2000	N	1	N	200	N	N	N	N	N	N	N	N	N	N
RP 438	10	1500	N	1000	N	2000	N	1	N	200	N	N	N	N	N	N	N	N	N	N
RP 458	10	1500	N	1000	N	2000	N	1	N	200	N	N	N	N	N	N	N	N	N	N
RP 478	10	1500	N	1000	N	2000	N	1	N	200	N	N	N	N	N	N	N	N	N	N
RP 498	10	1500	N	1000	N	2000	N	1	N	200	N	N	N	N	N	N	N	N	N	N
RP 518	10	1500	N	1000	N	2000	N	1	N	200	N	N	N	N	N	N	N	N	N	N
RP 538	10	1500	N	1000	N	2000	N	1	N	200	N	N	N	N	N	N	N	N	N	N
RP 558	10	1500	N	1000	N	2000	N	1	N	200	N	N	N	N	N	N	N	N	N	N
RP 578	10	1500	N	1000	N	2000	N	1	N	200	N	N	N	N	N	N	N	N	N	N
RP 598	10	1500	N	1000	N	2000	N	1	N	200	N	N	N	N	N	N	N	N	N	N
RP 618	10	1500	N	1000	N	2000	N	1	N	200	N	N	N	N	N	N	N	N	N	N
RP 638	10	1500	N	1000	N	2000	N	1	N	200	N	N	N	N	N	N	N	N	N	N
RP 658	10	1500	N	1000	N	2000	N	1	N	200	N	N	N	N	N	N	N	N	N	N
RP 678	10	1500	N	1000	N	2000	N	1	N	200	N	N	N	N	N	N	N	N	N	N
RP 698	10	1500	N	1000	N	2000	N	1	N	200	N	N	N	N	N	N	N	N	N	N
RP 718	10	1500	N	1000	N	2000	N	1	N	200	N	N	N	N	N	N	N	N	N	N
RP 738	10	1500	N	1000	N	2000	N	1	N	200	N	N	N	N	N	N	N	N	N	N
RP 758	10	1500	N	1000	N	2000	N	1	N	200	N	N	N	N	N	N	N	N	N	N
RP 778	10	1500	N	1000	N	2000	N	1	N	200	N	N	N	N	N	N	N	N	N	N
RP 798	10	1500	N	1000	N	2000	N	1	N	200	N	N	N	N	N	N	N	N	N	N
RP 818	10	1500	N	1000	N	2000	N	1	N	200	N	N	N	N	N	N	N	N	N	N
RP 838	10	1500	N	1000	N	2000	N	1	N	200	N	N	N	N	N	N	N	N	N	N
RP 858	10	1500	N	1000	N	2000	N	1	N	200	N	N	N	N	N	N	N	N	N	N
RP 878	10	1500	N	1000	N	2000	N	1	N	200	N	N	N	N	N	N	N	N	N	N
RP 898	10	1500	N	1000	N	2000	N	1	N	200	N	N	N	N	N	N	N	N	N	N
RP 918	10	1500	N	1000	N	2000	N	1	N	200	N	N	N	N	N	N	N	N	N	N
RP 938	10	1500	N	1000	N	2000	N	1	N	200	N	N	N	N	N	N	N	N	N	N
RP 958	10	1500	N	1000	N	2000	N	1	N	200	N	N	N	N	N	N	N	N	N	N
RP 978	10	1500	N	1000	N	2000	N	1	N	200	N	N	N	N	N	N	N	N	N	N
RP 998	10	1500	N	1000	N	2000	N	1	N	200	N	N	N	N	N	N	N	N	N	N
RP 1018	10	1500	N	1000	N	2000	N	1	N	200	N	N	N	N	N	N	N	N	N	N
RP 1038	10	1500	N	1000	N	2000	N	1	N	200	N	N	N	N	N	N	N	N	N	N
RP 1058	10	1500	N	1000	N	2000	N	1	N	200	N	N	N	N	N	N	N	N	N	N
RP 1078	10	1500	N	1000	N	2000	N	1	N	200	N	N	N	N	N	N	N	N	N	N
RP 1098	10	1500	N	1000	N	2000	N	1	N	200	N	N	N	N	N	N	N	N	N	N
RP 1118	10	1500	N	1000	N	2000	N	1	N	200	N	N	N	N	N	N	N	N	N	N
RP 1138	10	1500	N	1000	N	2000	N	1	N	200	N	N	N	N	N	N	N	N	N	N
RP 1158	10	1500	N	1000	N	2000	N	1	N	200	N	N	N	N	N	N	N	N	N	N
RP 1178	10	1500	N	1000	N	2000	N	1	N	200	N	N	N	N	N	N	N	N	N	N
RP 1198	10	1500	N	1000	N	2000	N	1	N	200	N	N	N	N	N	N	N	N	N	N
RP 1218	10	1500	N	1000	N	2000	N	1	N	200	N	N	N	N	N	N	N	N	N	N
RP 1238	10	1500	N	1000	N	2000	N	1	N	200	N	N	N	N	N	N	N	N	N	N
RP 1258	10	1500	N	1000	N	2000	N	1	N	200	N	N	N	N	N	N	N	N	N	N
RP 1278	10	1500	N	1000	N	2000	N	1	N	200	N	N	N	N	N	N	N	N	N	N
RP 1298	10	1500	N	1000	N	2000	N	1	N	200	N	N	N	N	N	N	N	N	N	N
RP 1318	10	1500	N	1000	N	2000	N	1	N	200	N	N	N	N	N	N	N	N	N	N
RP 1338	10	1500	N	1000	N	2000	N	1	N	200	N	N	N	N	N	N	N	N	N	N
RP 1358	10	1500	N	1000	N	2000	N	1	N	200	N	N	N	N	N	N	N	N	N	N
RP 1378	10	1500	N	1000	N	2000	N	1	N	200	N	N	N	N	N	N	N	N	N	N
RP 1398	10	1500	N	1000	N	2000	N	1	N	200	N	N	N	N	N	N	N	N	N	N
RP 1418	10	1500	N	1000	N	2000	N	1	N	200	N	N	N	N	N	N	N	N	N	N
RP 1438	10	1500	N	1000	N	2000	N	1	N	200	N	N	N	N	N	N	N	N	N	N
RP 1458	10	1500	N	1000	N	2000	N	1	N	200	N	N	N	N	N	N	N	N	N	N
RP 1478	10	1500	N	1000	N	2000	N	1	N	200	N	N	N	N	N	N	N	N	N	N
RP 1498	10	1500	N	1000	N	2000	N	1	N	200	N	N	N	N	N	N	N	N	N	N
RP 1518	10	1500	N	1000	N	2000	N	1	N	200	N	N	N	N	N	N	N	N	N	N
RP 1538	10	1500	N	1000	N	2000	N	1	N	200	N	N	N	N	N	N	N	N	N	N
RP 1558	10	1500	N	1000	N	2000	N	1	N	200	N	N	N	N	N	N	N	N	N	N
RP 1578	10	1500	N	1000	N	2000	N	1	N	200	N	N	N	N	N	N	N	N	N	N
RP 1598	10	1500	N	1000	N	2000	N	1	N	200	N	N	N	N	N	N	N	N	N	N
RP 1618	10	1500	N	1000	N	2000	N	1	N	200	N	N	N	N	N	N	N	N	N	N
RP 1638	10	1500	N	1000	N	2000	N	1	N	200	N	N	N	N	N	N	N	N	N	N
RP 1658	10	1500	N	1000	N	2000	N	1	N	200	N	N	N	N	N	N	N	N	N	N
RP 1678	10	1500	N	1000	N	2000	N	1	N	200	N	N	N	N	N	N	N	N	N	N
RP 1698	10	1500	N	1000	N	2000														