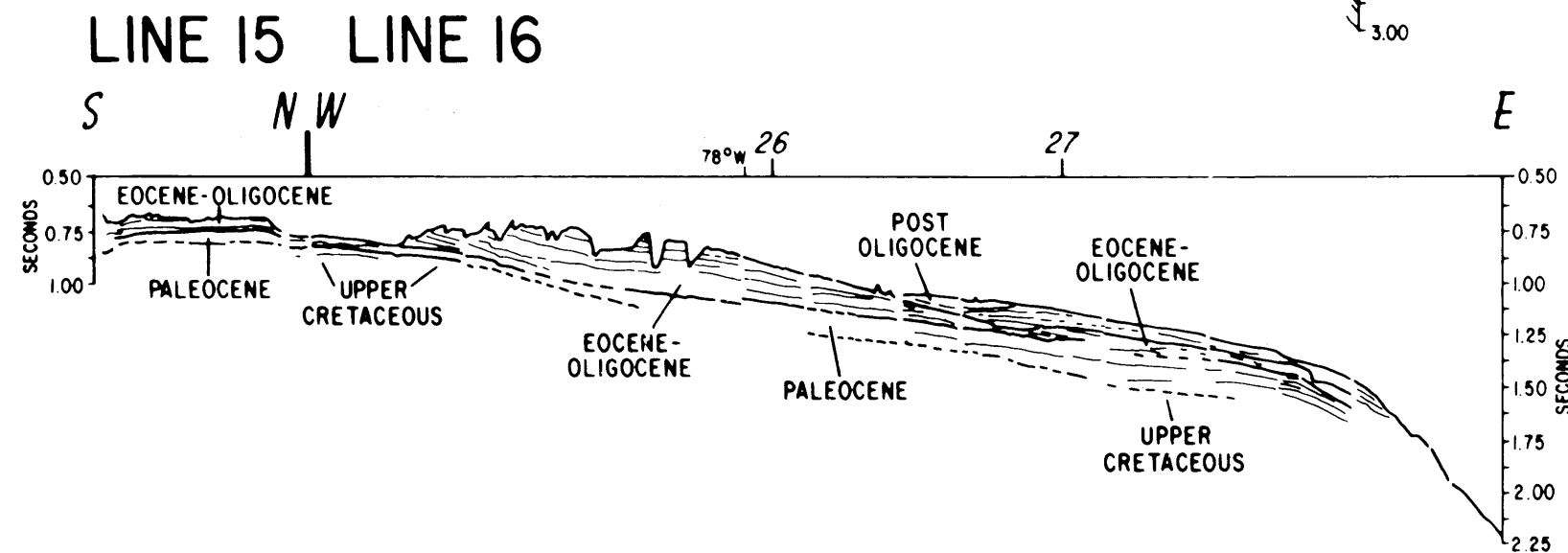
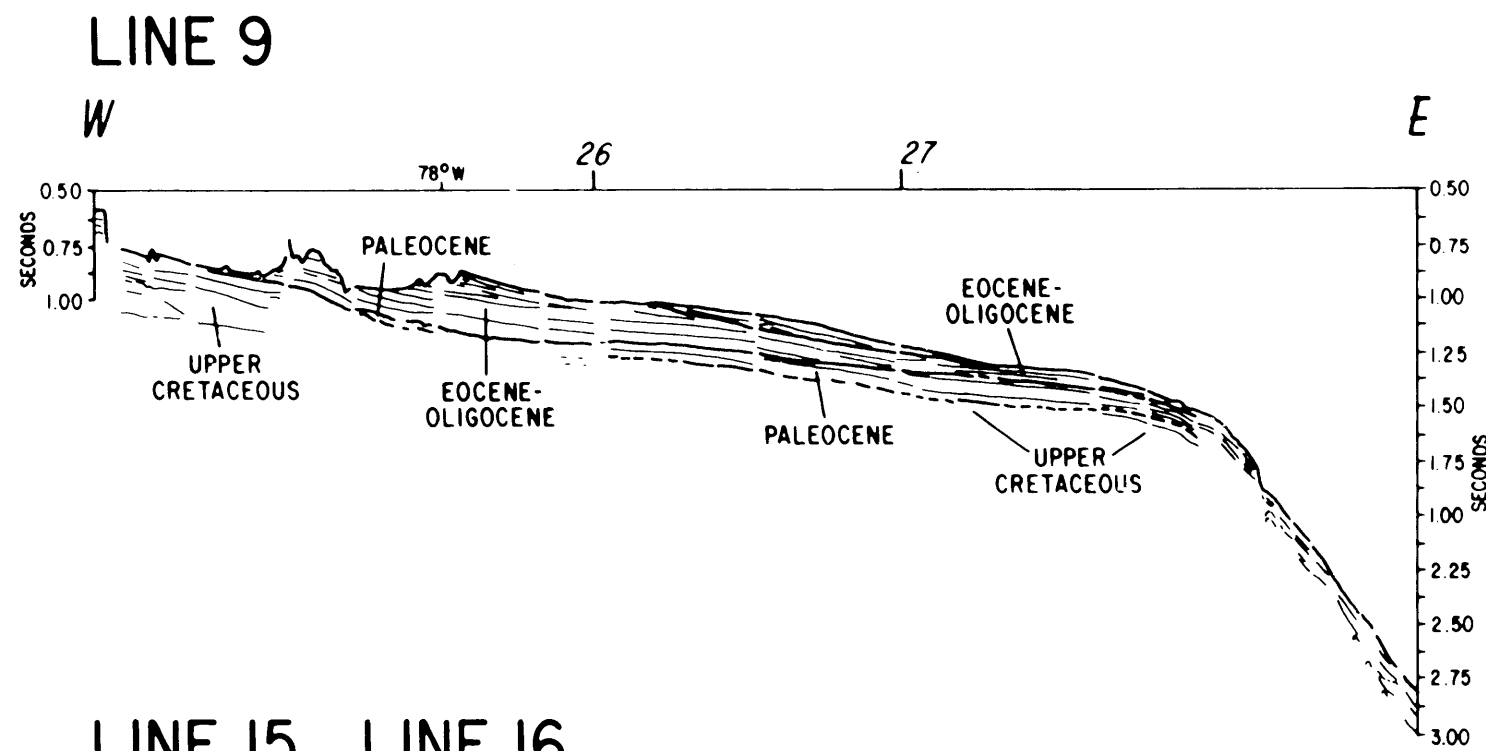
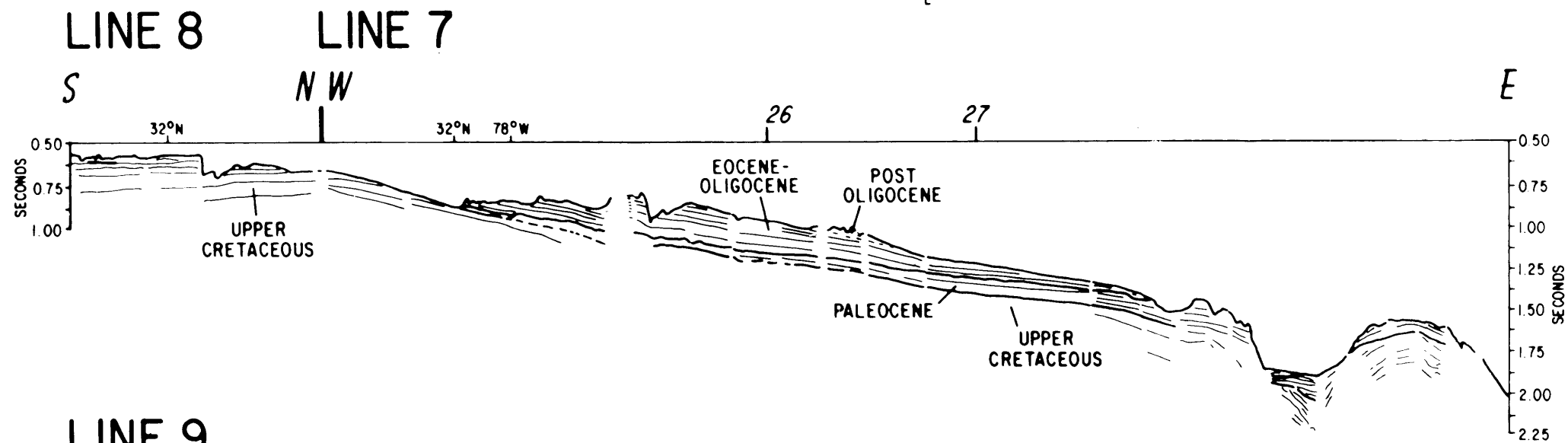
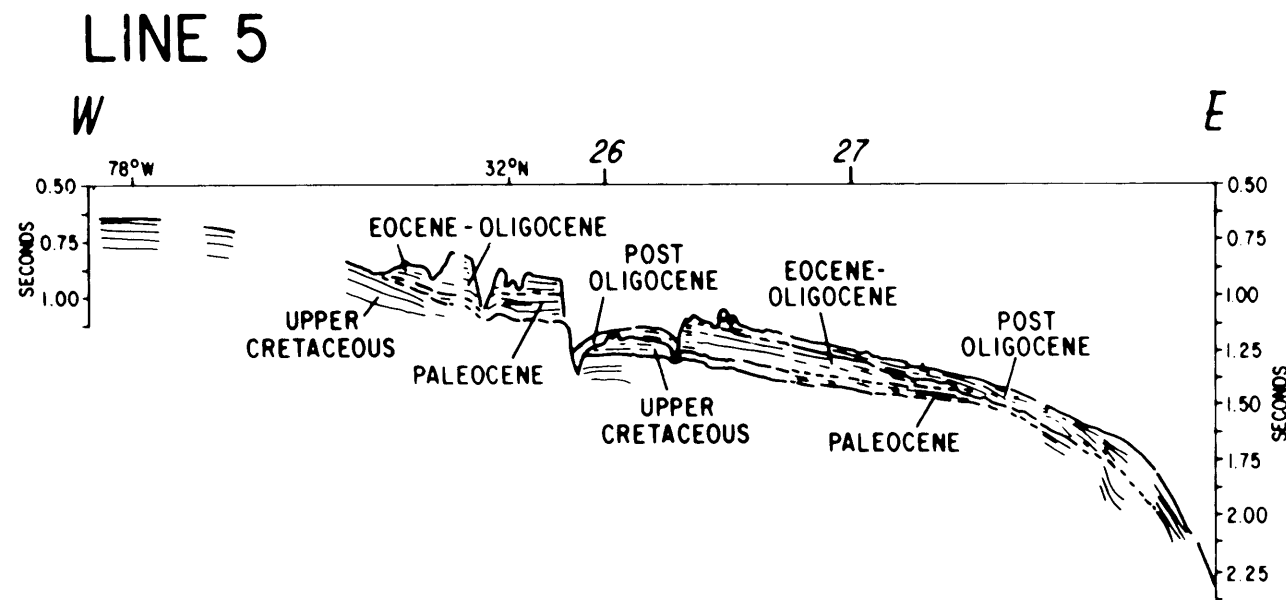
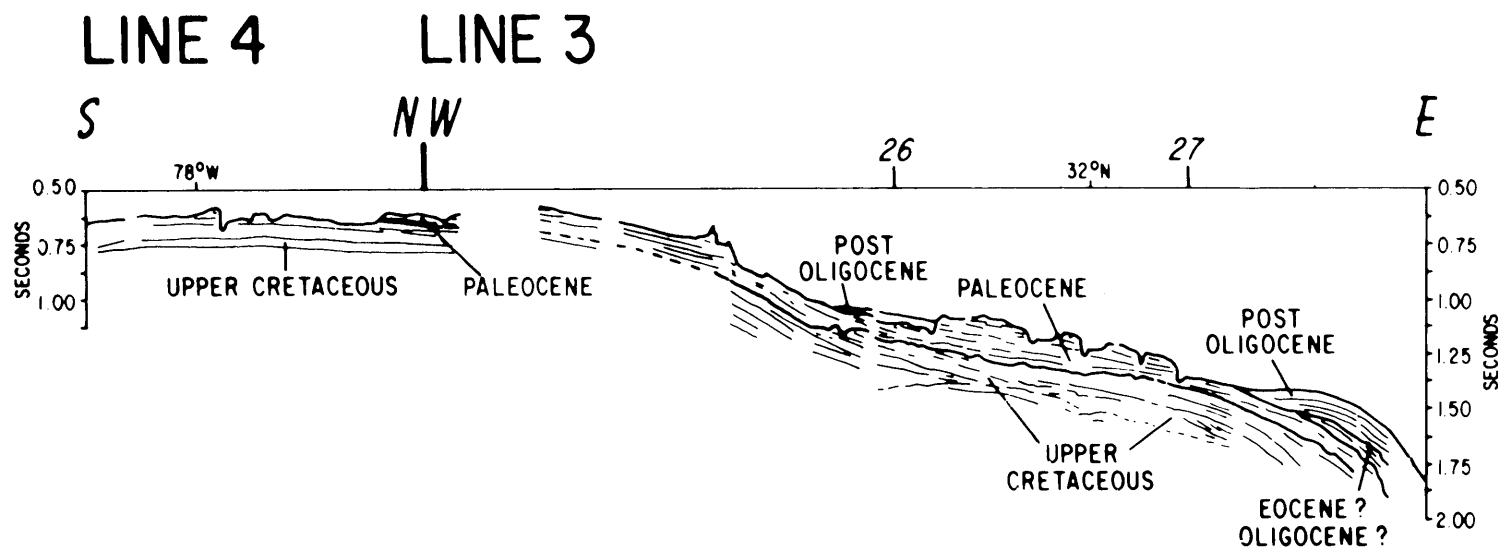
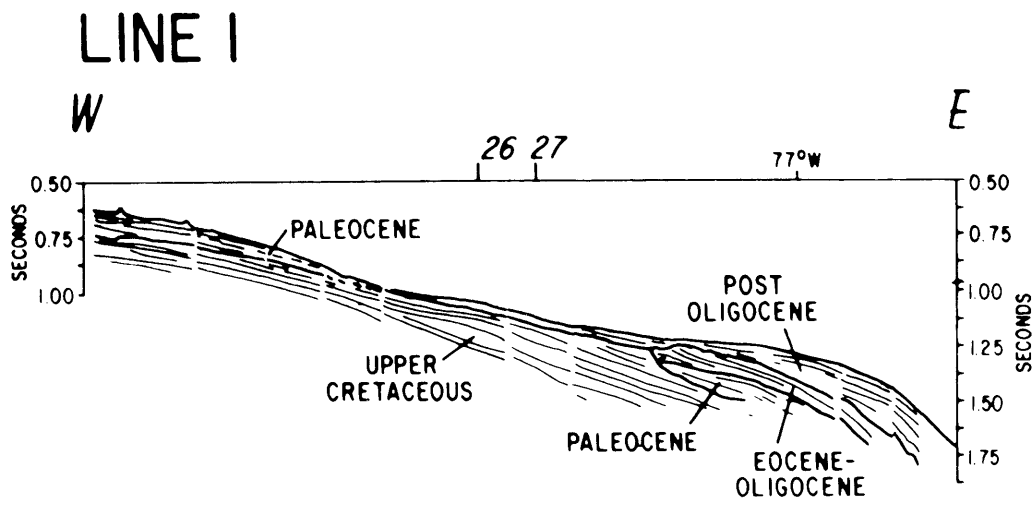


PLATE 7-1. LINE DRAWINGS OF MINISPARKER SEISMIC-REFLECTION PROFILES 1, 3, 4, 5, 7, 8, 9, 15, AND 16, CRUISE CI 7-78-3, SHOWING SHALLOW SEISMIC STRATIGRAPHIC UNITS OF THE BLAKE PLATEAU. DEPTHS ARE IN TWO-WAY TRAVEL TIME. NUMBERS AT TOP OF DRAWINGS INDICATE LOCATIONS OF INTERSECTION WITH OTHER SEISMIC LINES IN THIS SURVEY OR WITH LATITUDE OR LONGITUDE CROSSINGS. THE LARGE APPARENT HUMP ON THE EAST END OF LINE 1 IS CAUSED BY COURSE CHANGES OF THE SHIP DURING THE SURVEY AND THUS IS NOT REAL.



This report is preliminary and has not been reviewed for conformity with U.S. Geological Survey editorial standards. Any use of trade names is for descriptive purposes only and does not imply endorsement by the USGS.