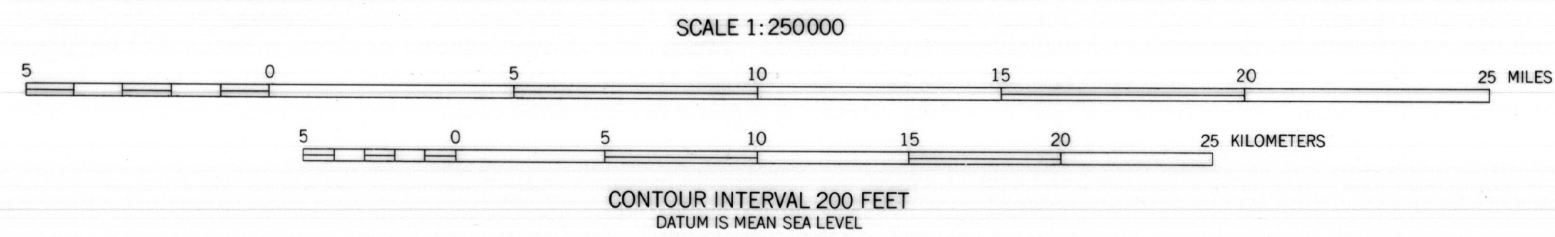


BASE FROM U.S. GEOLOGICAL SURVEY (1951, 1951-1963, 1952) AND AMS (1951-1953)



CIRCULAR AND ARCUATE FEATURES MAP

EXPLANATION OF IMAGERY INTERPRETATION

- 1-7 Circular or arcuate feature. Numbers refer to features described in "Discussion".
- Iron-oxide-colored areas

PRELIMINARY MAPS SHOWING INTERPRETATION OF LANDSAT IMAGERY OF THE UGASHIK AND KARLUK QUADRANGLES, ALASKA

by
James R. Le Compte

1981

This map is preliminary and has not been reviewed for conformity with U.S. Geological Survey editorial standards.

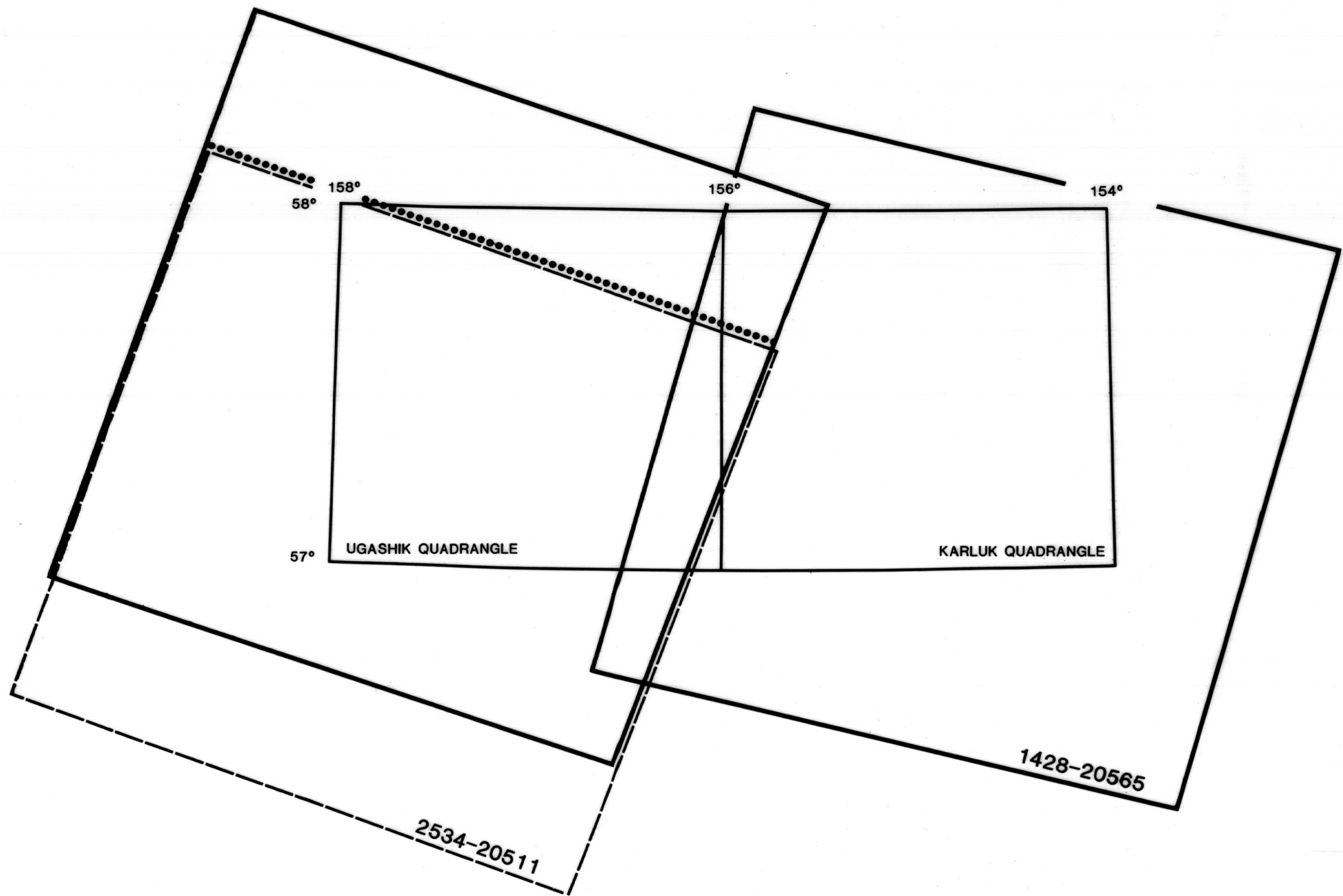


Figure 1. Map showing location of Landsat imagery used in analyses of the Ugashik and Karluk quadrangles. Dotted line indicates mosaic boundary for composite image (simulated natural color #1) noted in "Table of Imagery Used in Analyses".

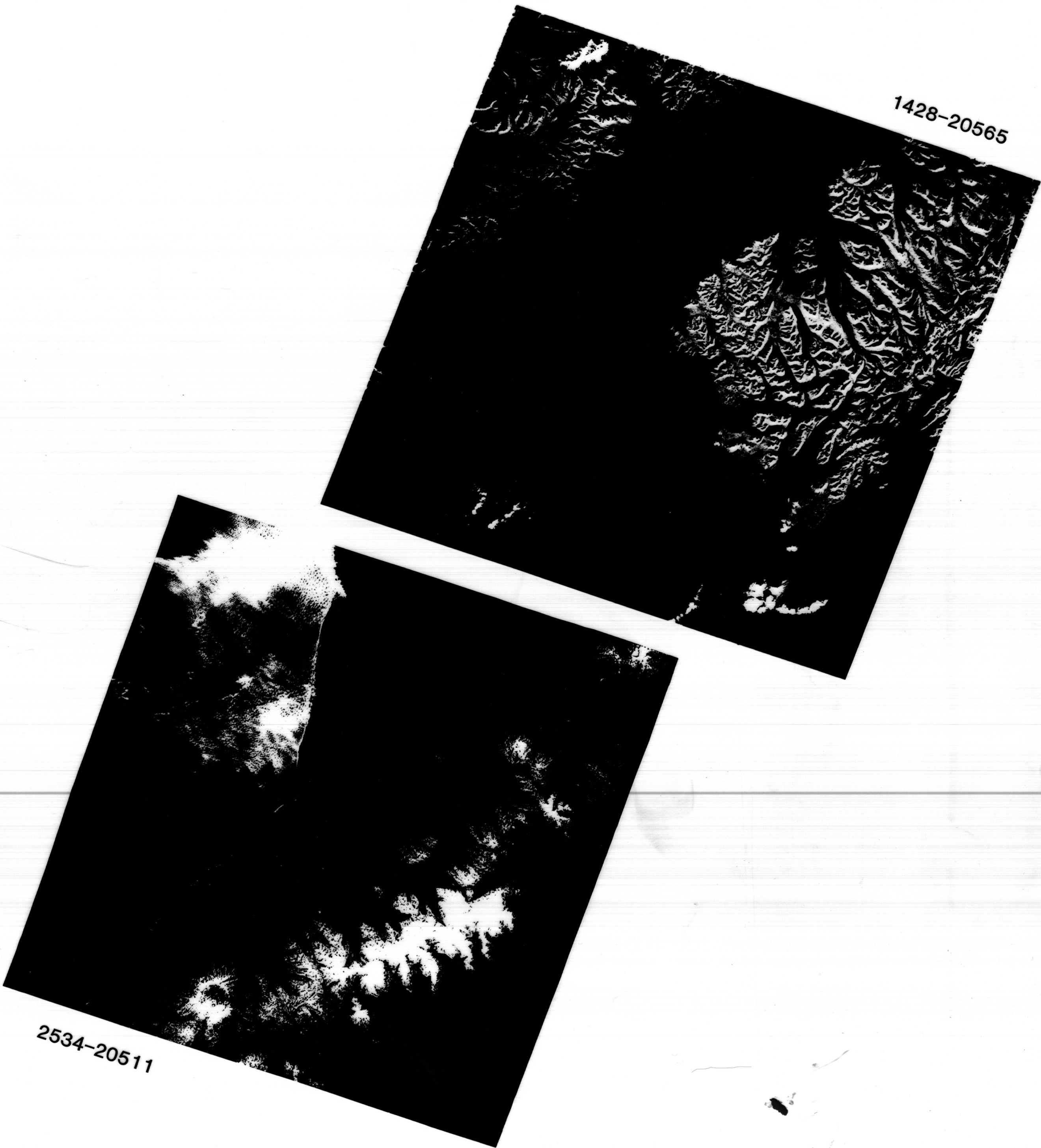


Figure 2. Example of imagery used in analyses of the Ugashik and Karluk quadrangles. Band 7.