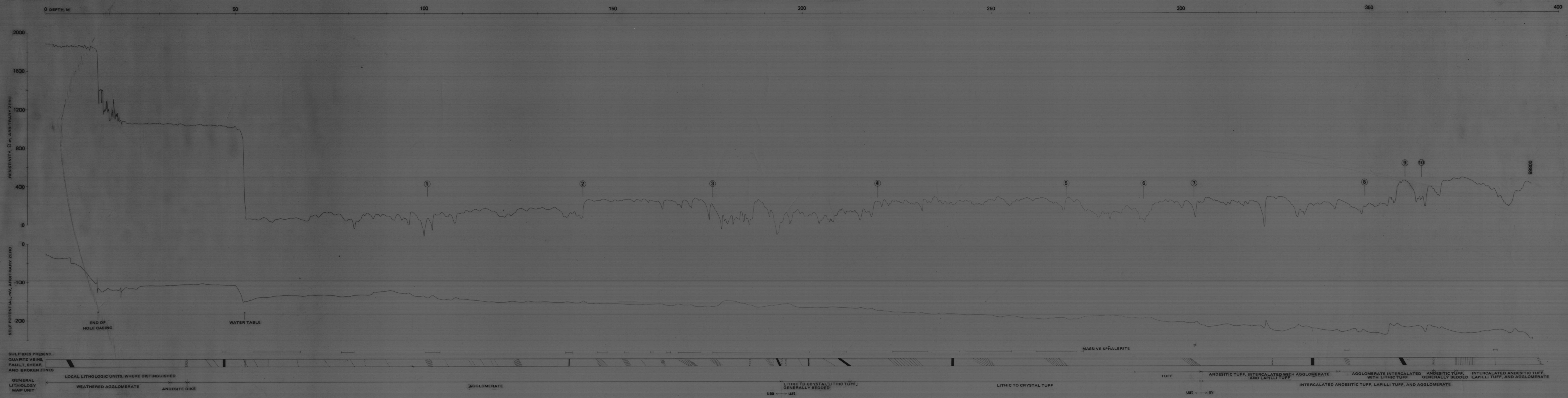


SINGLE-POINT RESISTIVITY, SELF POTENTIAL, AND ABBREVIATED GEOLOGY OF DRILL HOLE MD 8, MAHD ADH DHAHAB DISTRICT, KINGDOM OF SAUDI ARABIA

Electric logs measured in June 1975 by M. E. Gertzel and D. B. Bremer using a Metronic 1K type D logger



SINGLE-POINT RESISTIVITY, SELF POTENTIAL, AND ABBREVIATED GEOLOGY OF DRILL HOLE MD 9, MAHD ADH DHAHAB DISTRICT, KINGDOM OF SAUDI ARABIA

Electric logs measured in June 1975 by M. E. Gertzel and D. B. Bremer using a Metronic 1K type D logger

Circled numbers represent points of correlation between logs of MD 8 and MD 9.

This report is preliminary and has not been reviewed for conformity with U. S. Geological Survey editorial standards. Use of trade names is for descriptive purposes only and does not constitute endorsement by the USGS.