

UNITED STATES DEPARTMENT OF THE INTERIOR
 GEOLOGICAL SURVEY

GEOPHYSICAL DATA COLLECTED ACROSS THE OREGON CONTINENTAL SHELF
 ALONG LINE 2, USGS R/V S. P. LEE CRUISE 3-76

By
 Parke D. Snively, Jr.

Open-File Report
 81-848

This report is preliminary and has not been reviewed for
 conformity with U.S. Geological Survey editorial standards.
 Any use of trade names is for descriptive purposes only
 and does not imply endorsement by the USGS.

Geophysical Data Collected Across the Oregon Continental Shelf
 Along Line 2, USGS R/V S. P. LEE Cruise 3-76

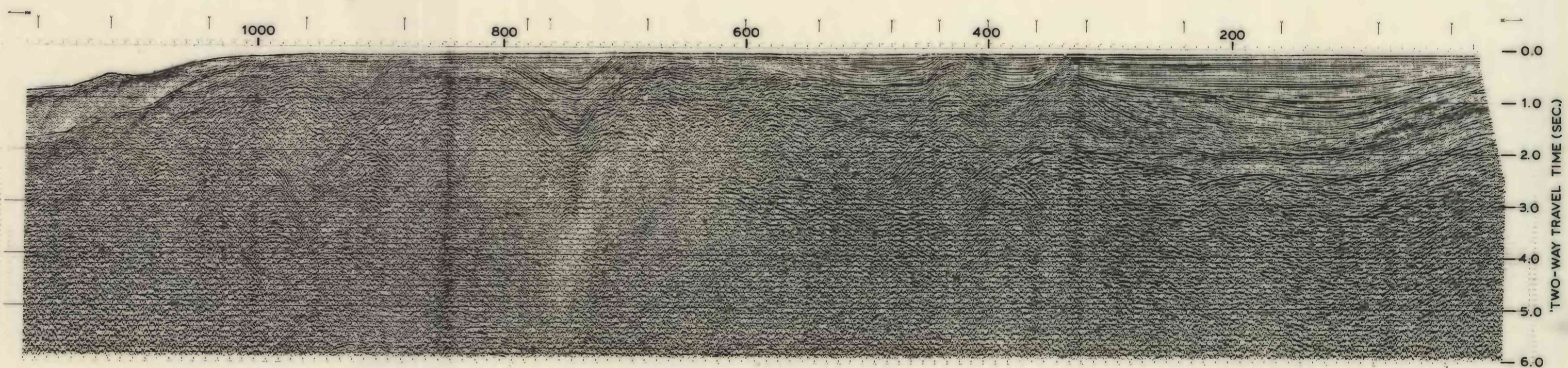
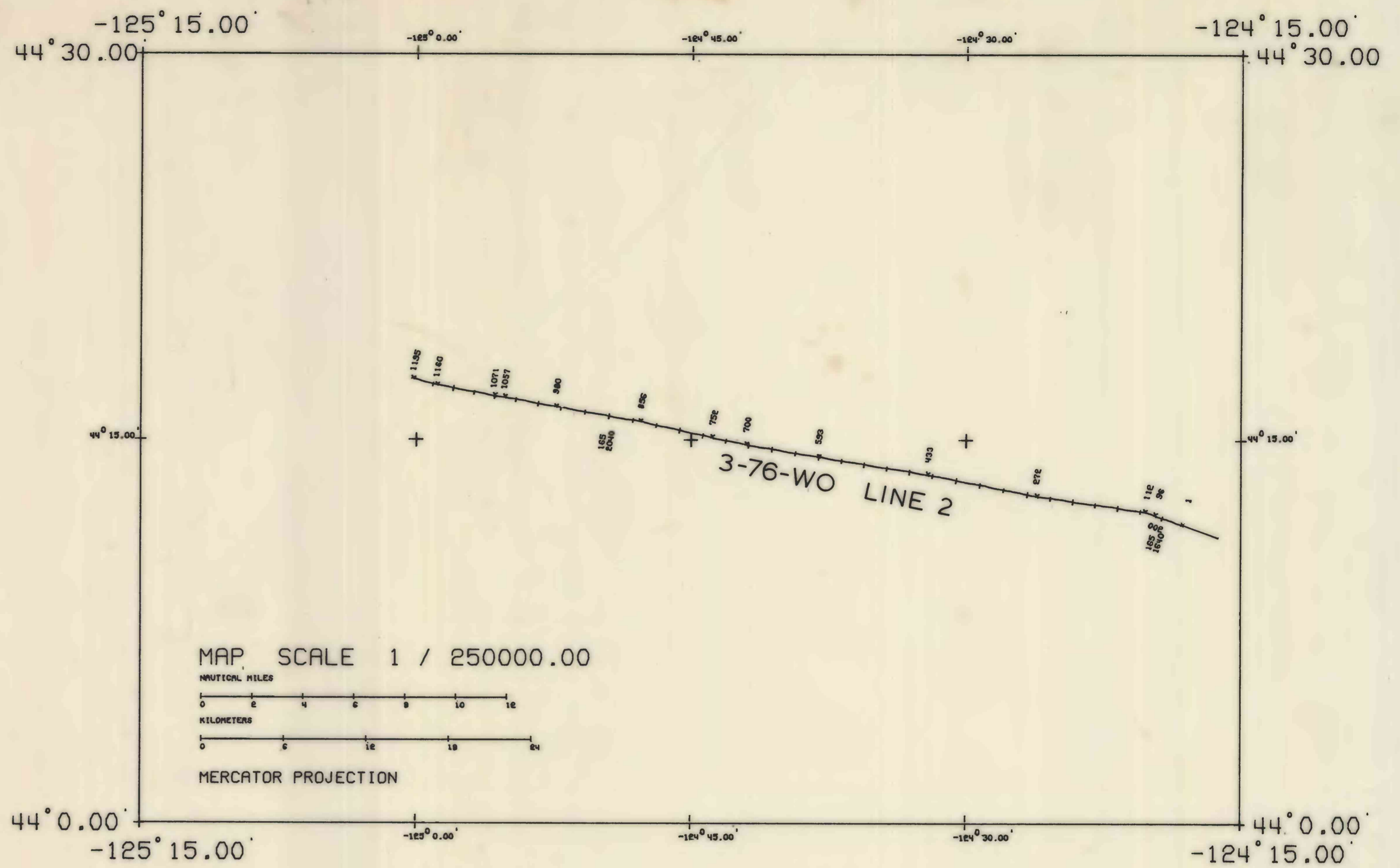
by
 Parke D. Snively, Jr.

During 1976 the U.S. Geological Survey collected 24-channel seismic
 reflection and magnetic data across the Oregon continental margin. Data for
 profile Line 2, were collected aboard the R/V S. P. LEE using a sound source
 of five airguns totaling 1326 in³. The recording system consisted of a 24-
 channel streamer (2400 meters long) and GUS (Global Universal Science) model
 4300 digital recording instrument. Multichannel seismic reflection data were
 sampled at a 2-millisecond rate and later processed at a 4-millisecond rate.
 Magnetic data were obtained using a Proton-precision magnetometer. Naviga-
 tional control for the survey was by satellite fixes augmented by doppler-
 sonar dead reckoning.

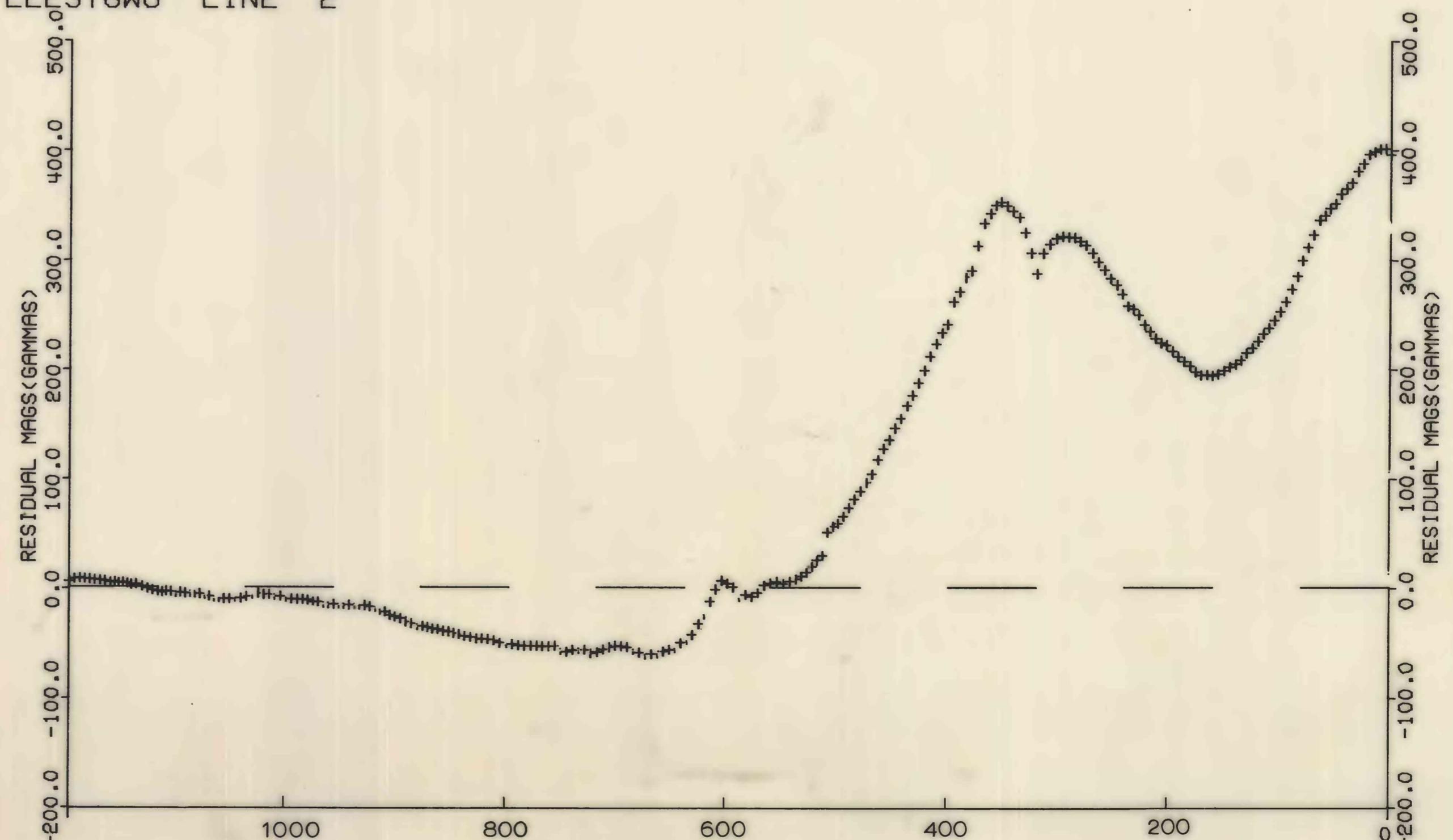
The seismic and magnetic data along Line 2 may be examined at the U.S.
 Geological Survey office, Room B-164, Deer Creek Facility, 3475 Deer Creek
 Road, Palo Alto, California. Copies of the data on 35-mm continuous flow film
 are available through the National Geophysical and Solar-Terrestrial Data
 Center, NOAA, Boulder, CO 80302, telephone (303) 499-1000, ext. 6542.

Reference

Snively, P. D., Jr., Wagner, H. C., Rau, W. W., and Bukry, David, 1981,
 Geological cross section of the southern Oregon Coast Range and the
 adjacent continental shelf: U.S. Geological Survey Open-File Report 81-
 (in press).



LEE376WO LINE 2



D 165
 H 23
 M 46.0

D 165
 H 15
 M 54.0

RESIDUAL MAGS- +