

EXPLANATION

- Well, 1978 inventory and water sample
- Well, pre-1978 inventory and water sample
- Approximate boundary of valley lowlands
- Study area boundary

Chemical symbols and specified levels for selected constituents<sup>1</sup>

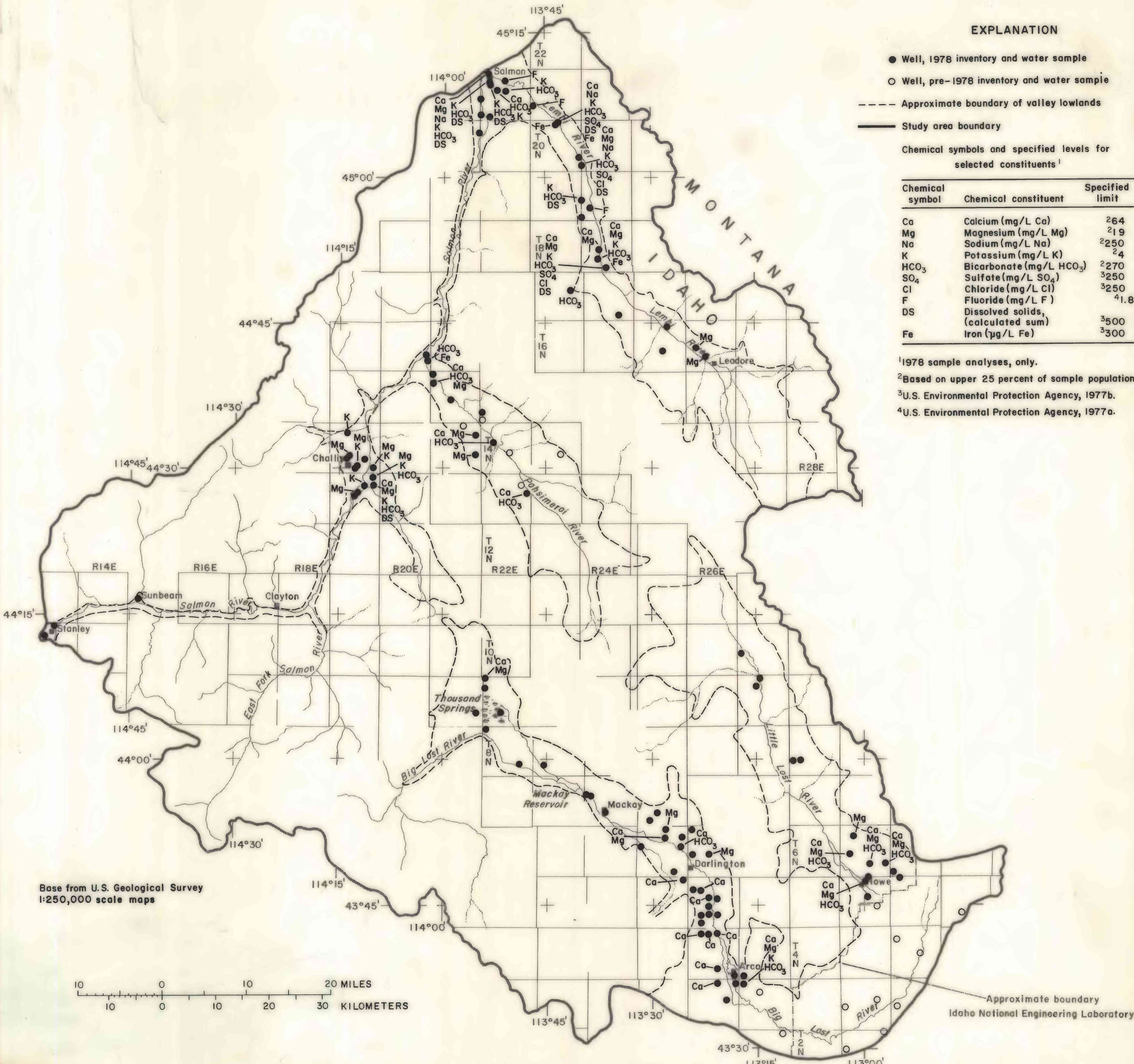
Chemical symbol	Chemical constituent	Specified limit
Ca	Calcium (mg/L Ca)	264
Mg	Magnesium (mg/L Mg)	219
Na	Sodium (mg/L Na)	2250
K	Potassium (mg/L K)	24
HCO <sub>3</sub>	Bicarbonate (mg/L HCO <sub>3</sub> )	2270
SO <sub>4</sub>	Sulfate (mg/L SO <sub>4</sub> )	3250
Cl	Chloride (mg/L Cl)	3250
F	Fluoride (mg/L F)	41.8
DS	Dissolved solids, (calculated sum)	3500
Fe	Iron (µg/L Fe)	3300

<sup>1</sup>1978 sample analyses, only.

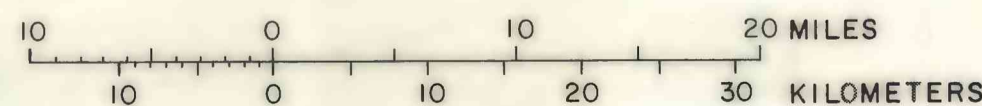
<sup>2</sup>Based on upper 25 percent of sample population.

<sup>3</sup>U.S. Environmental Protection Agency, 1977b.

<sup>4</sup>U.S. Environmental Protection Agency, 1977a.



Base from U.S. Geological Survey  
1:250,000 scale maps



LOCATIONS OF SAMPLING SITES AND DISTRIBUTION OF WATER-QUALITY CHARACTERISTICS EXCEEDING SPECIFIED LIMITS (1978 DATA)

Approximate boundary  
Idaho National Engineering Laboratory