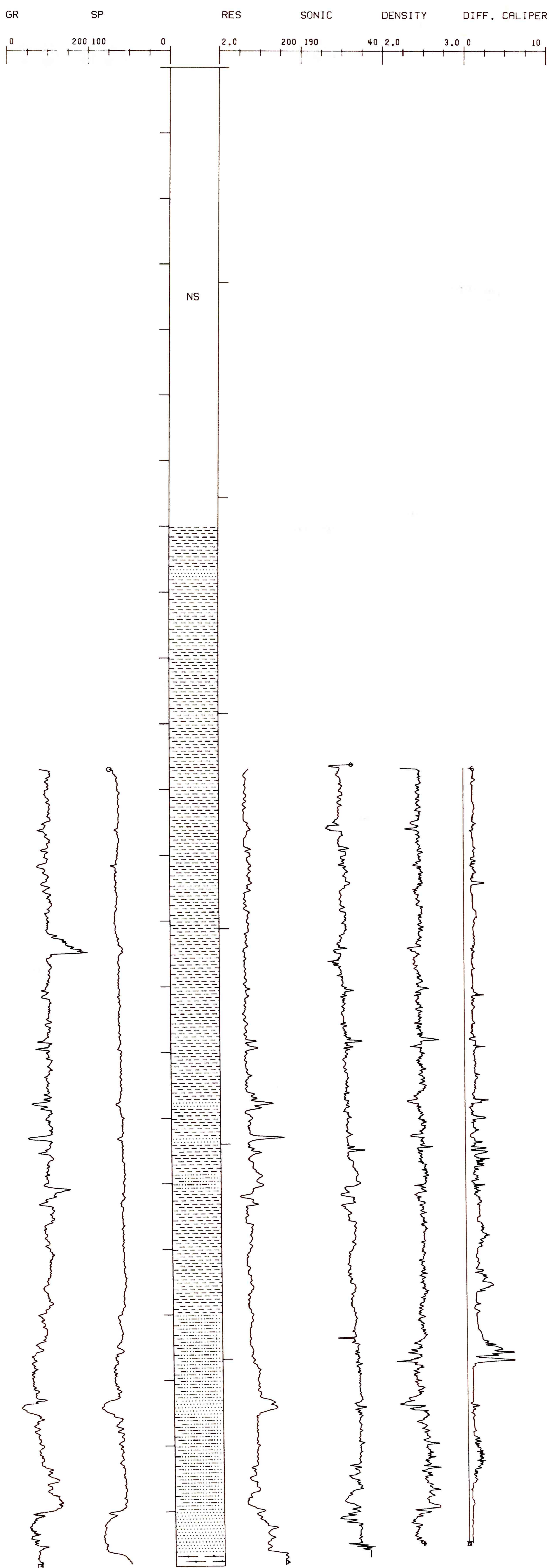


SOUTH BARROW NO. 12

API #50-023-20006

SEC 23 T 22N R 17W

TD 2285 FT., KB 26 FT.



DEPARTMENT OF THE INTERIOR U.S. GEOLOGICAL SURVEY OFFICE OF THE NATIONAL PETROLEUM RESERVE IN ALASKA			
LOCATION:		NPRA	
LOG DISPLAY (NO. 2)			
AUTHOR:	K. BIRD	DATE:	4-18-80
DATUM:	26 ASL	SCALE:	1IN:100FT
DRWG BY:	EXPLORATION TECHNOLOGY	TSP NO.:	138
		DRWG NO.:	