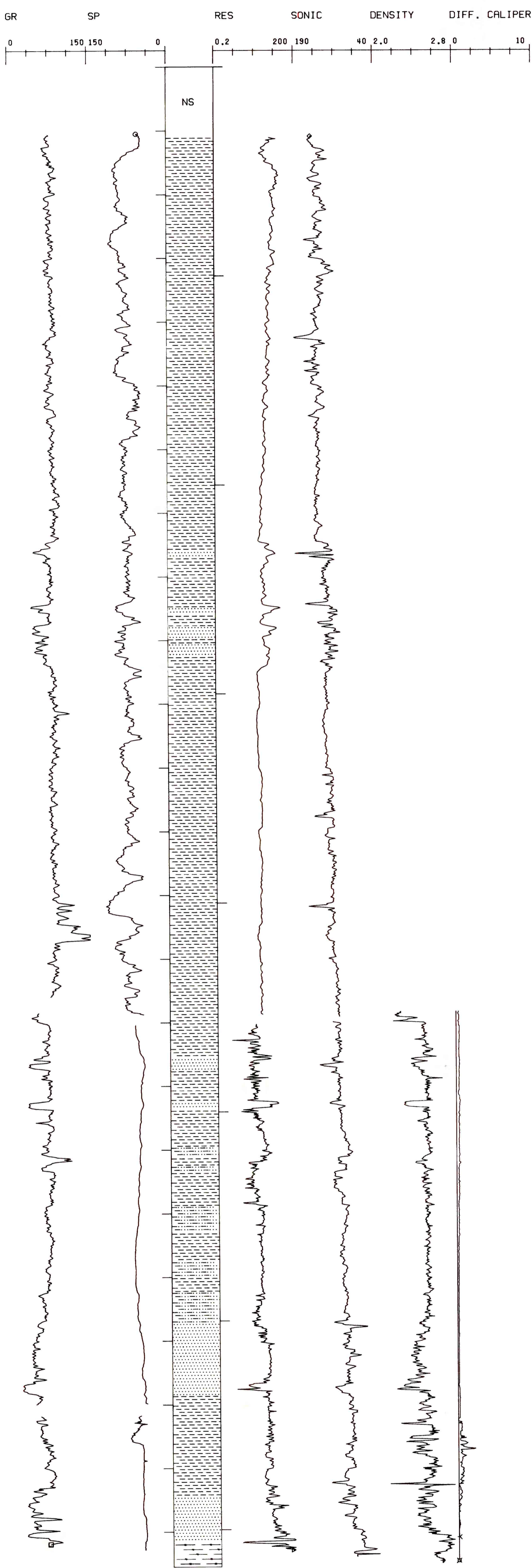


# SOUTH BARROW NO. 20

API #50-023-20015

SEC 26 T 22N R 17W

TD 2356 FT., KB 30 FT.



DEPARTMENT OF THE INTERIOR U.S. GEOLOGICAL SURVEY OFFICE OF THE NATIONAL PETROLEUM RESERVE IN ALASKA			
LOCATION:		NPRA	
S. BARROW NO. 20 LOG DISPLAY BOREHOLE CORR. GAMMA RAY			
AUTHOR:	K. BIRD	DATE:	7-28-80
DATUM:	30 ASL	SCALE:	1IN:100FT
DRWG BY:	EXPLORATION TECHNOLOGY	TSP NO.:	PI-210
		DRWG NO.:	