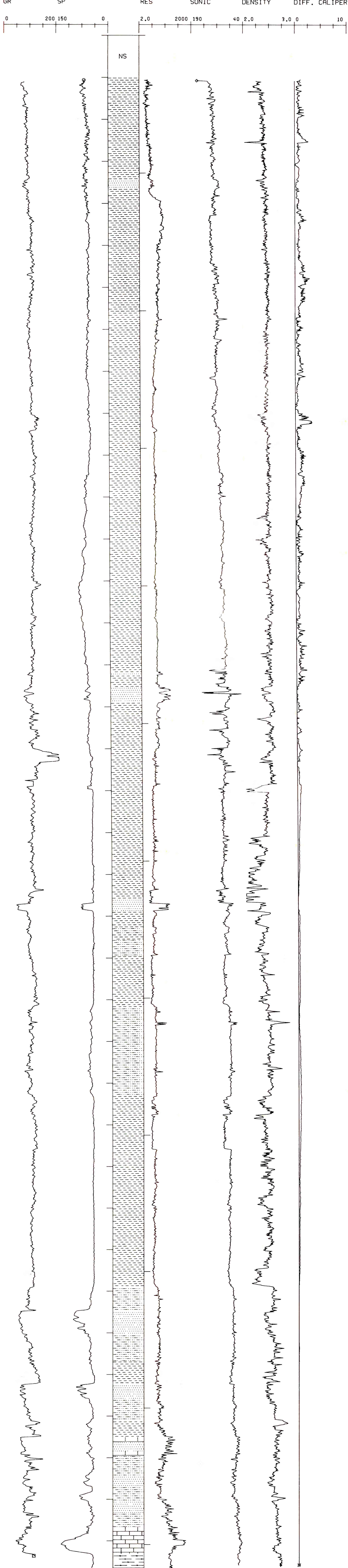


WALAKPA NO. 1

API# 50-023-20013

SEC 9 T 20N R 19W

TD 3666 FT., KB 50 FT.



DEPARTMENT OF THE INTERIOR U.S. GEOLOGICAL SURVEY OFFICE OF THE NATIONAL PETROLEUM RESERVE IN ALASKA		
LOCATION: NPRA		
WALAKPA NO. 1 LOG DISPLAY BOREHOLE CORR. GAMMA RAY		
AUTHOR: K. BIRD	DATE: 05-28-80	
DATUM: 50 ASL	SCALE: 1IN:100FT	TSP NO. PI-173
DRWG BY: EXPLORATION TECHNOLOGY	DRWG NO.	