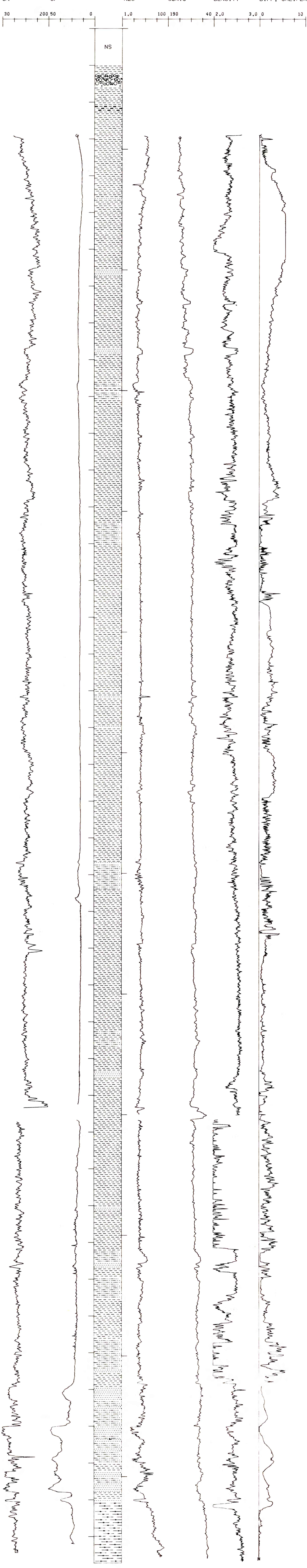


# WEST DEASE NO. 1

API #50-023-20014

SEC 21 T 21N R 14W

TD 4173 FT., KB 24 FT.



DEPARTMENT OF THE INTERIOR U.S. GEOLOGICAL SURVEY OFFICE OF THE NATIONAL PETROLEUM RESERVE IN ALASKA			
LOCATION:		NPRA	
WEST DEASE LOG DISPLAY			
AUTHOR:	K. BIRD	DATE:	01-13-81
DATUM:	KB 24 FT.	SCALE:	1 IN. = 100 FT.
DRWG BY:	EXPLORATION TECHNOLOGY	TSP NO.:	PI-171
		DRWG NO.:	