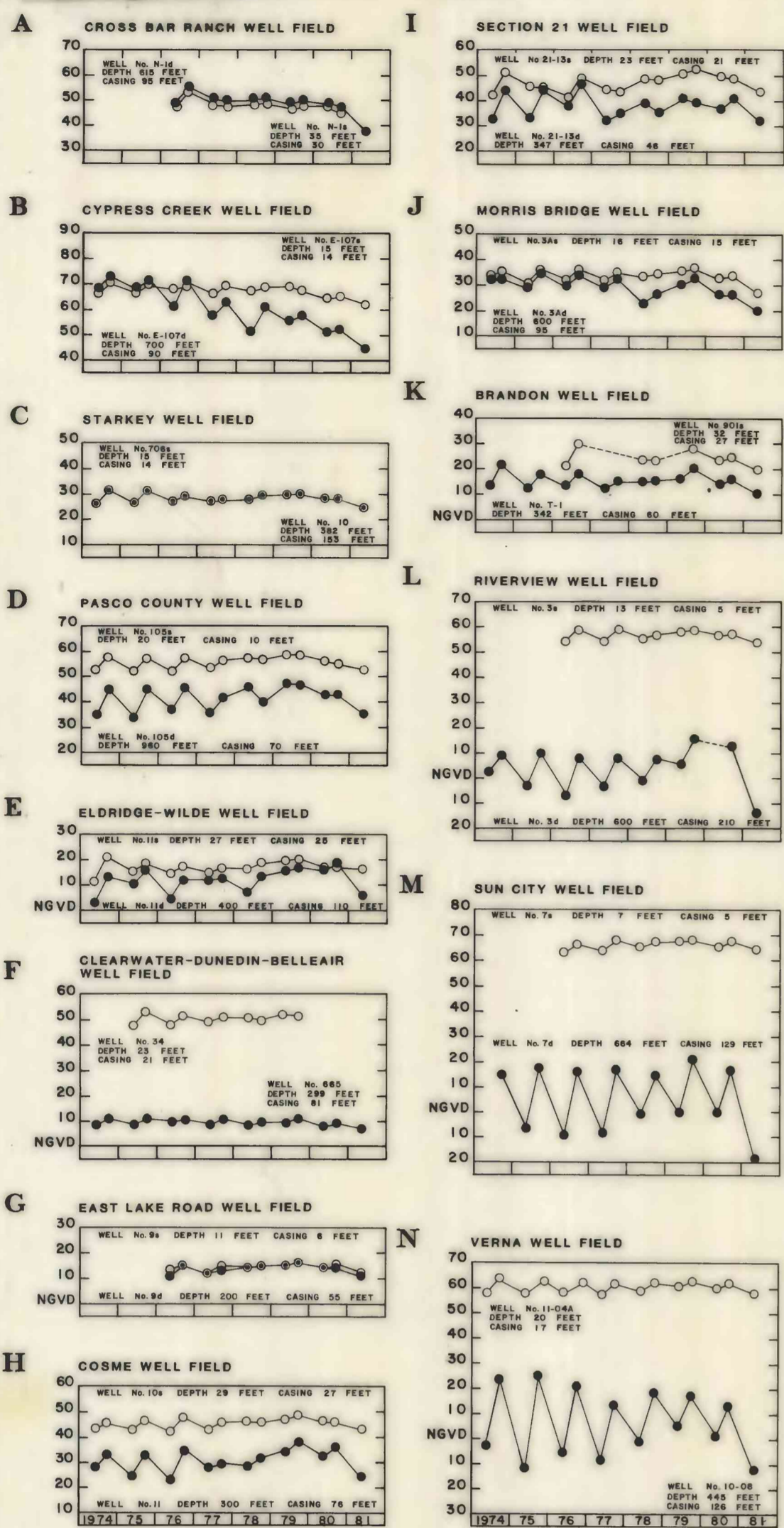


ALTITUDE OF POTENTIOMETRIC SURFACE AND WATER TABLE IN FEET ABOVE OR BELOW NATIONAL GEODETIC VERTICAL DATUM OF 1929

HYDROGRAPHS OF SELECTED WELLS TAPPING THE SURFICIAL AND FLORIDAN AQUIFERS

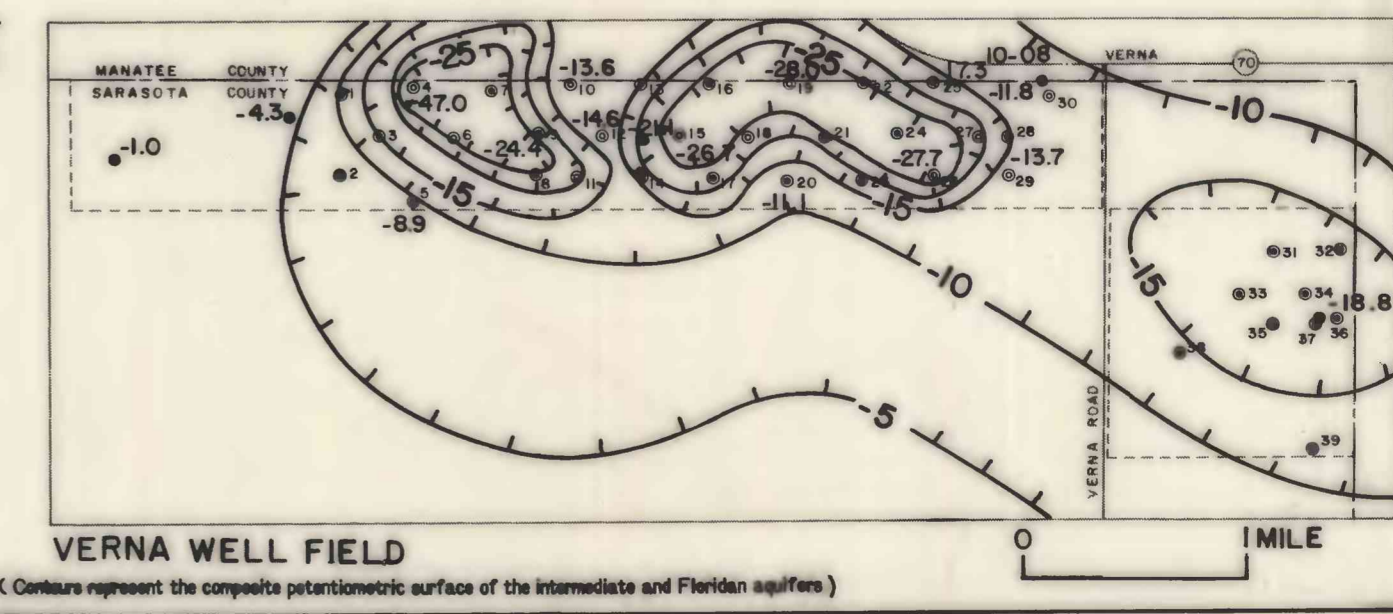
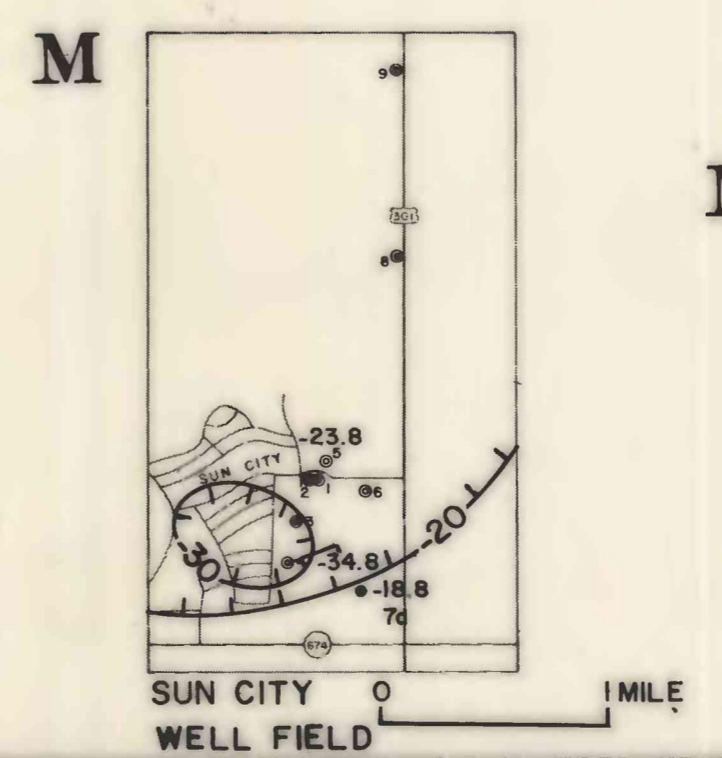
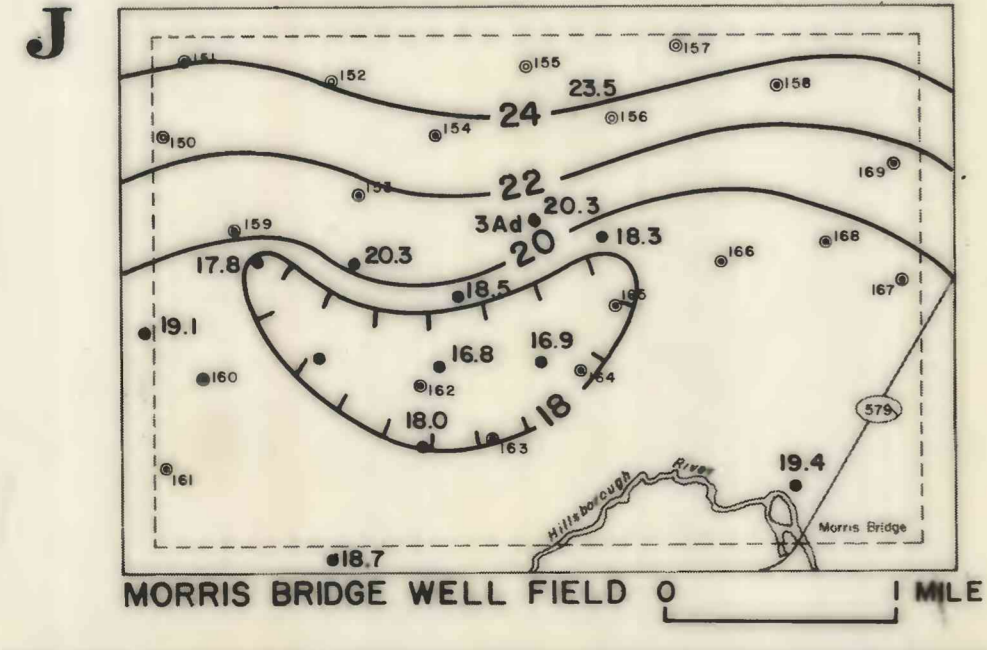
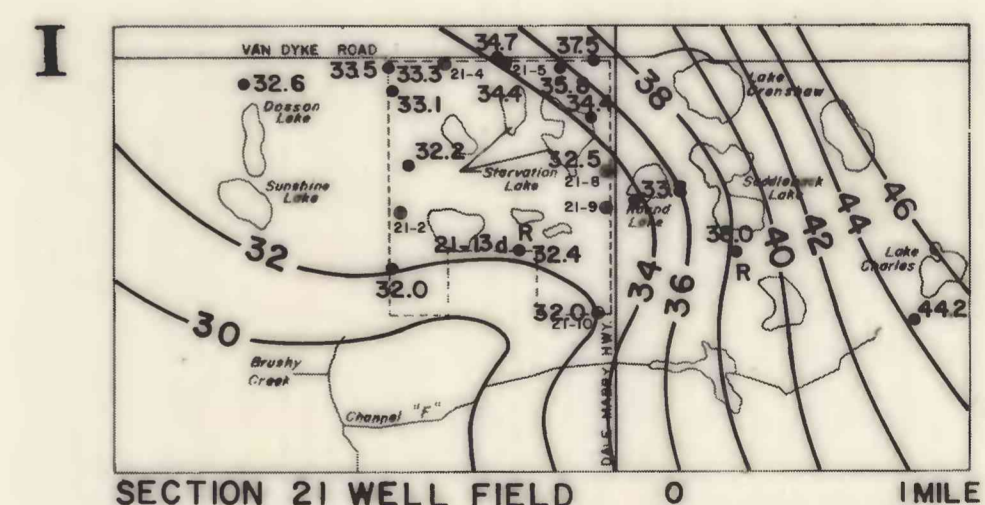
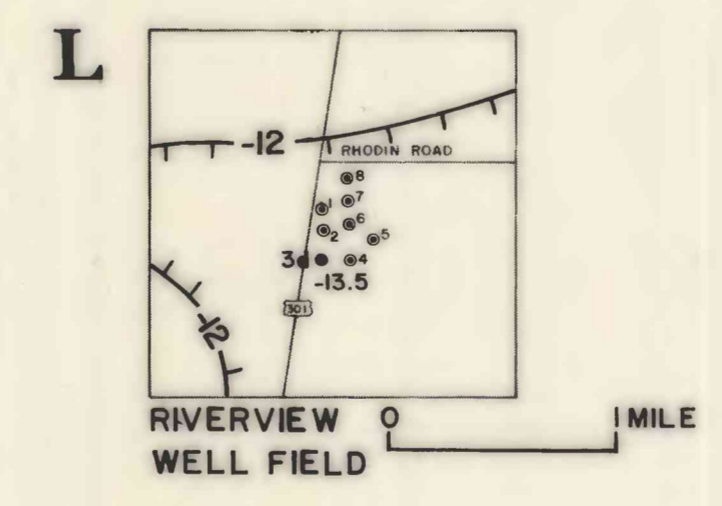
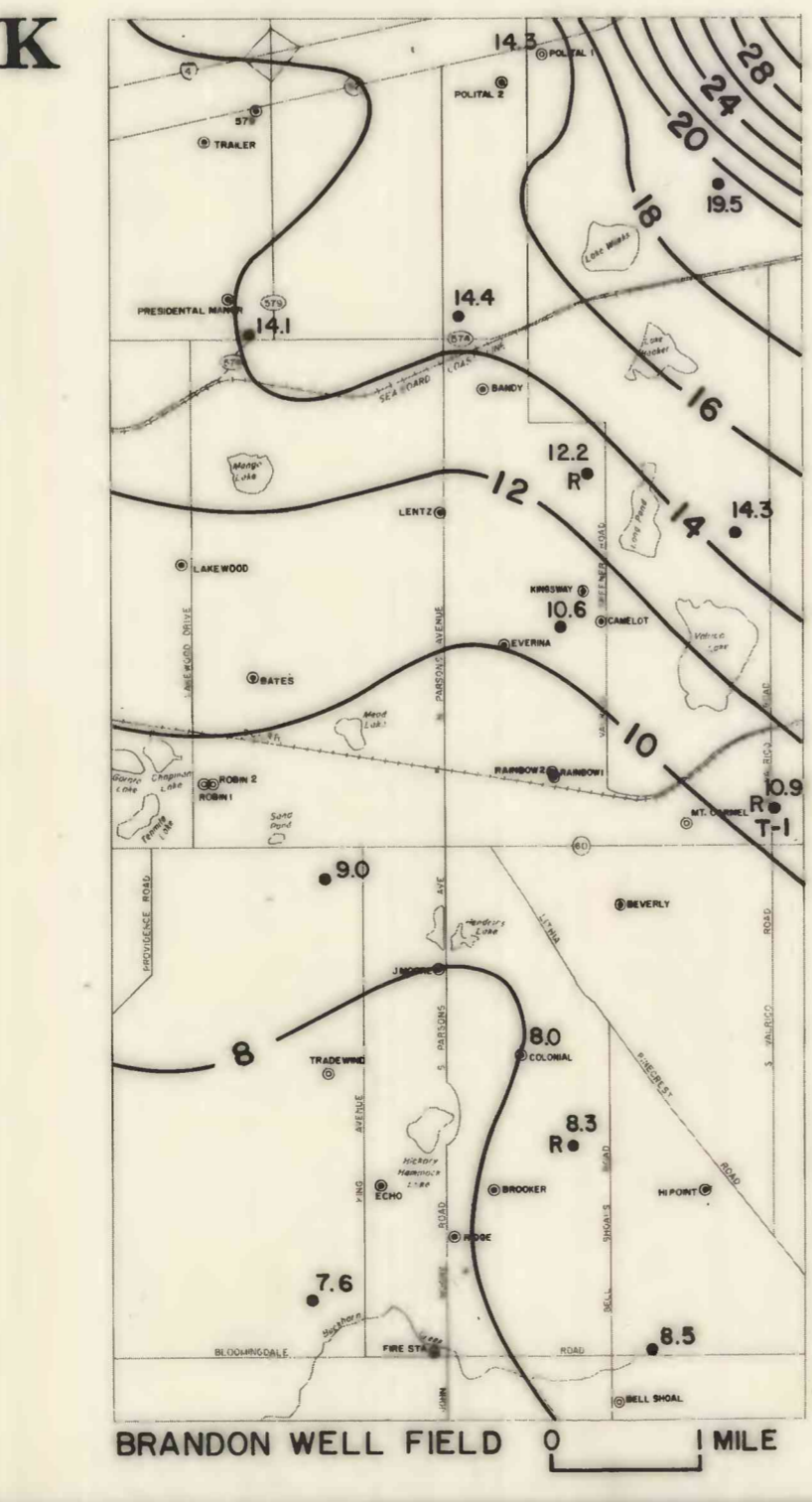
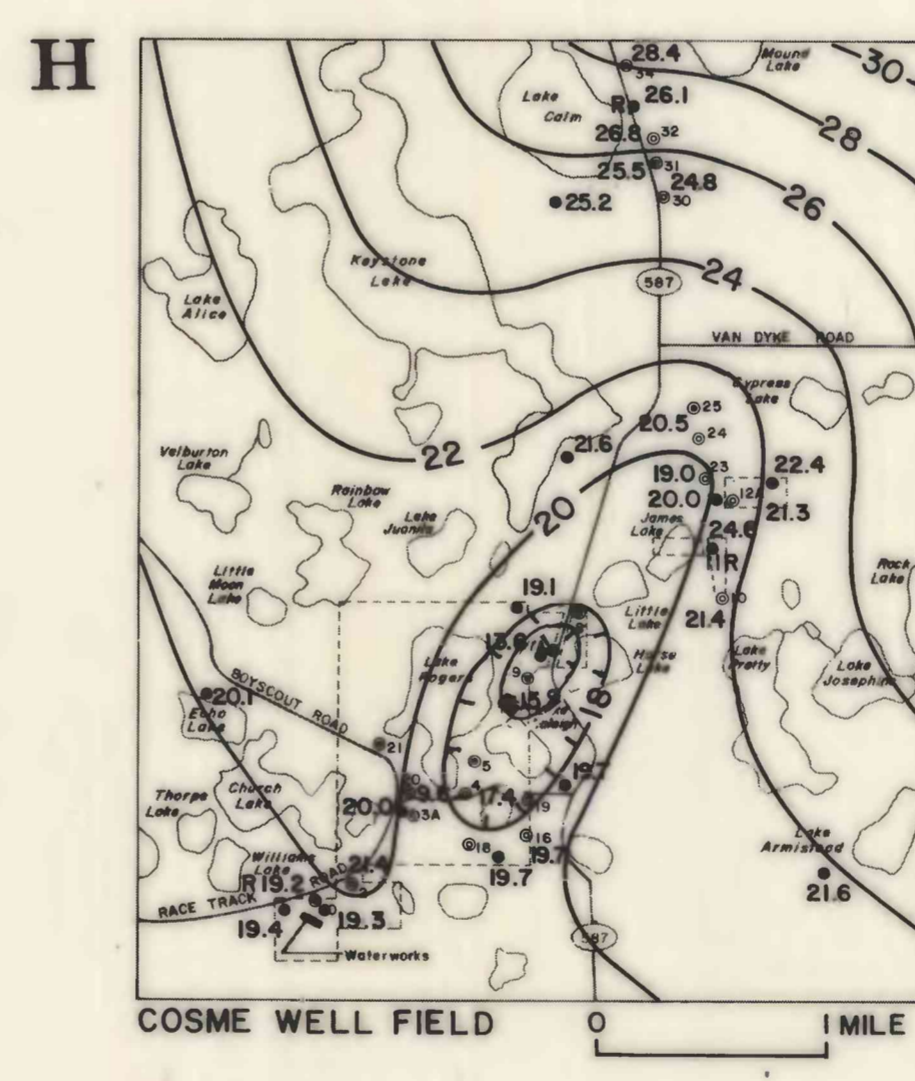
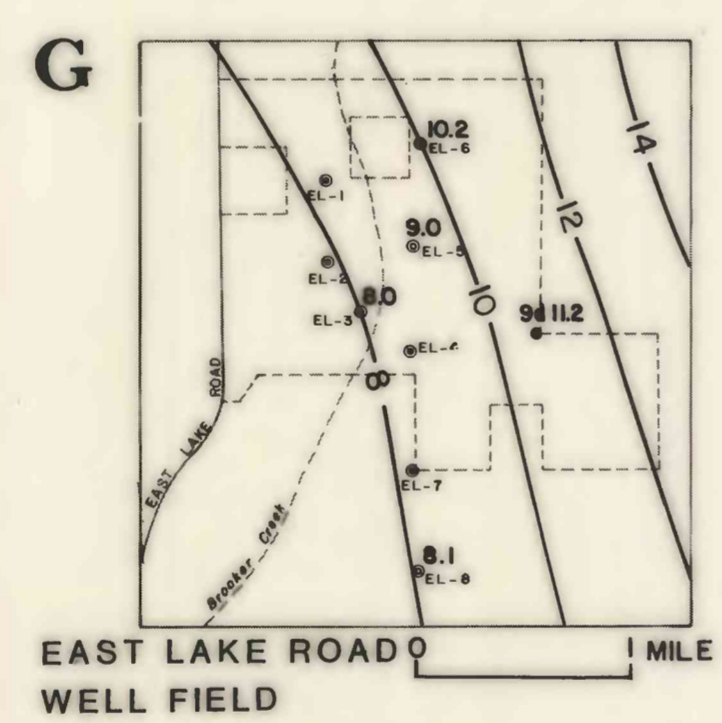
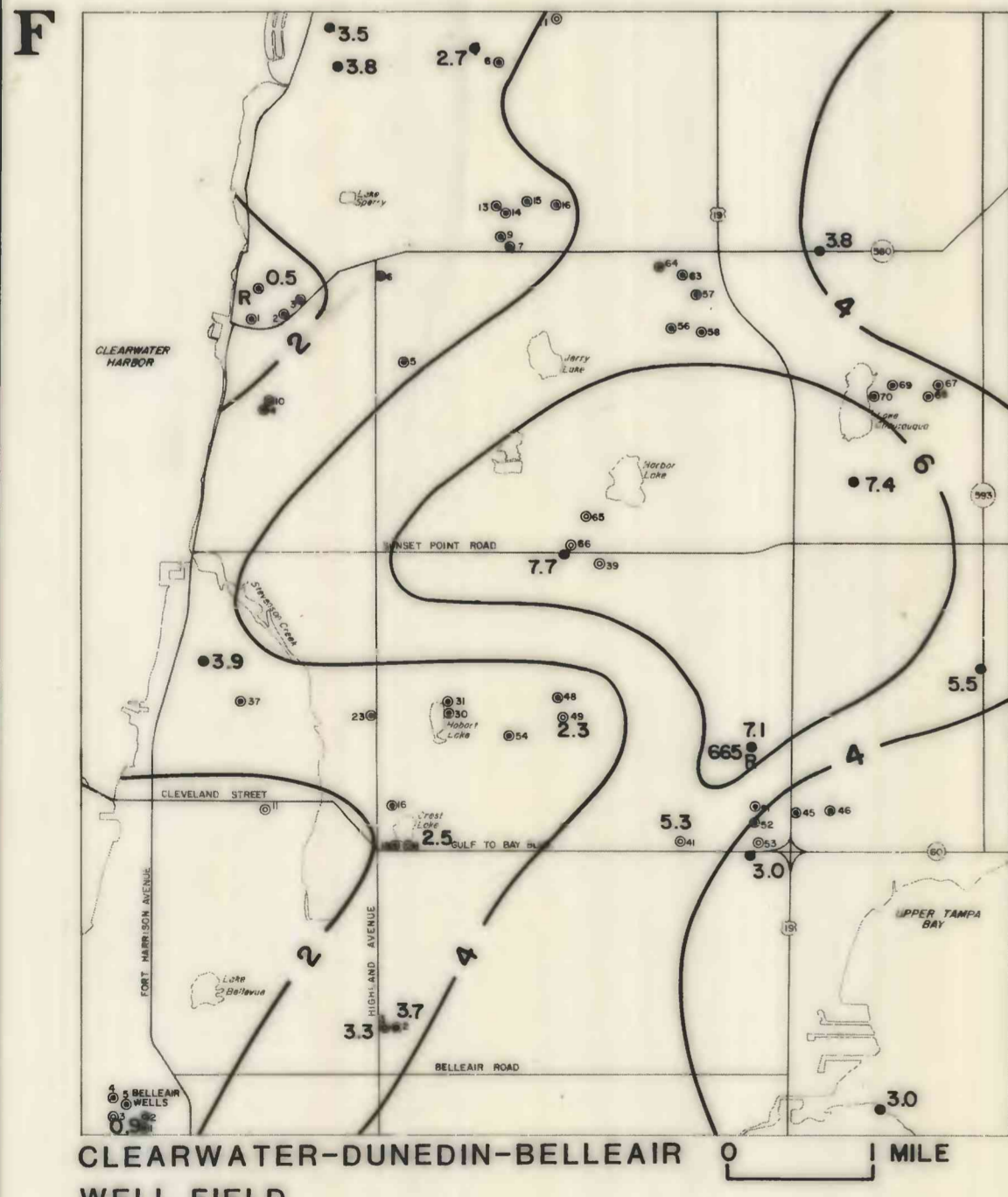
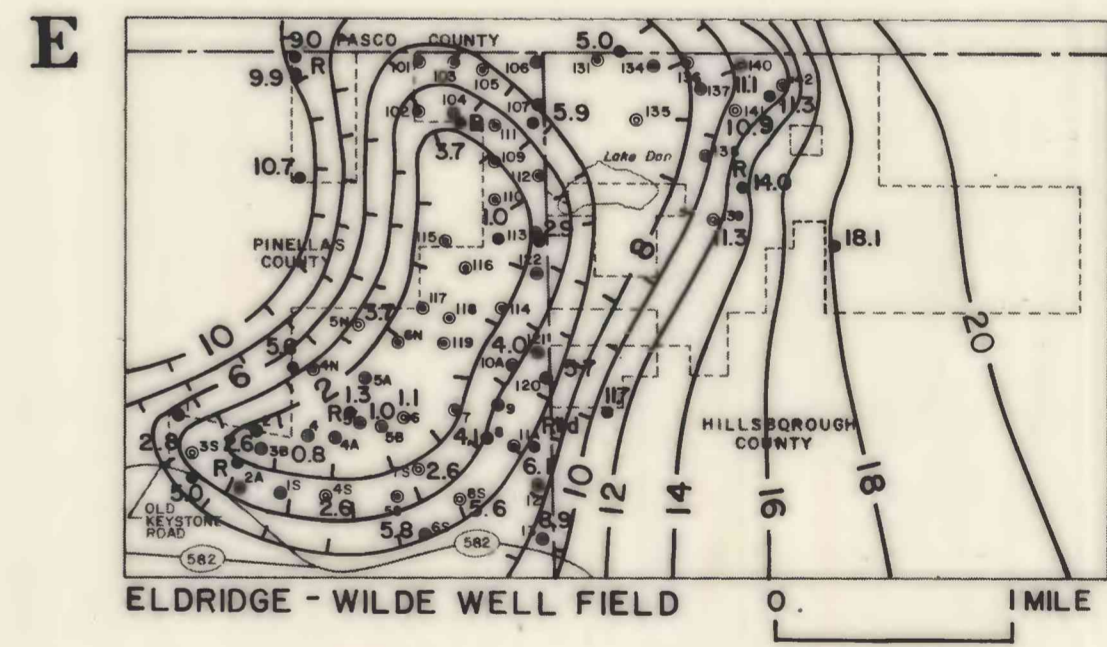
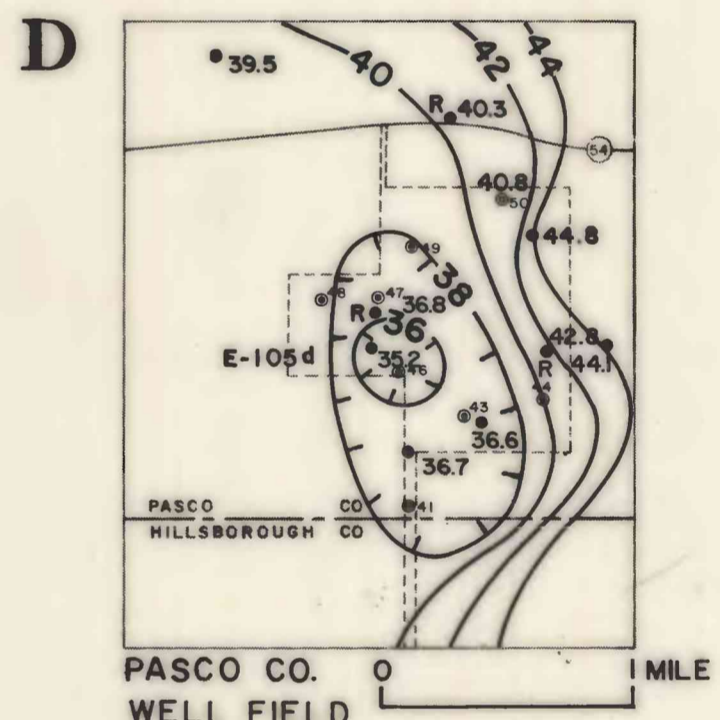
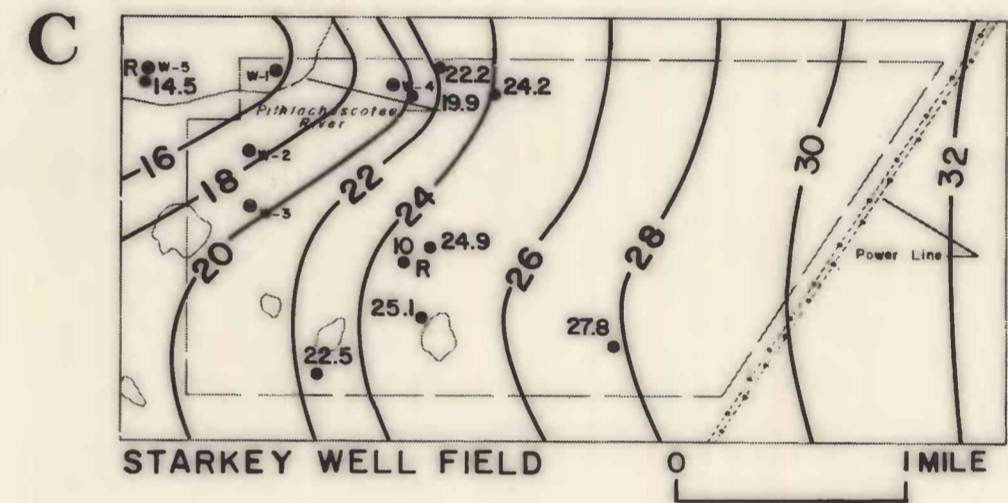
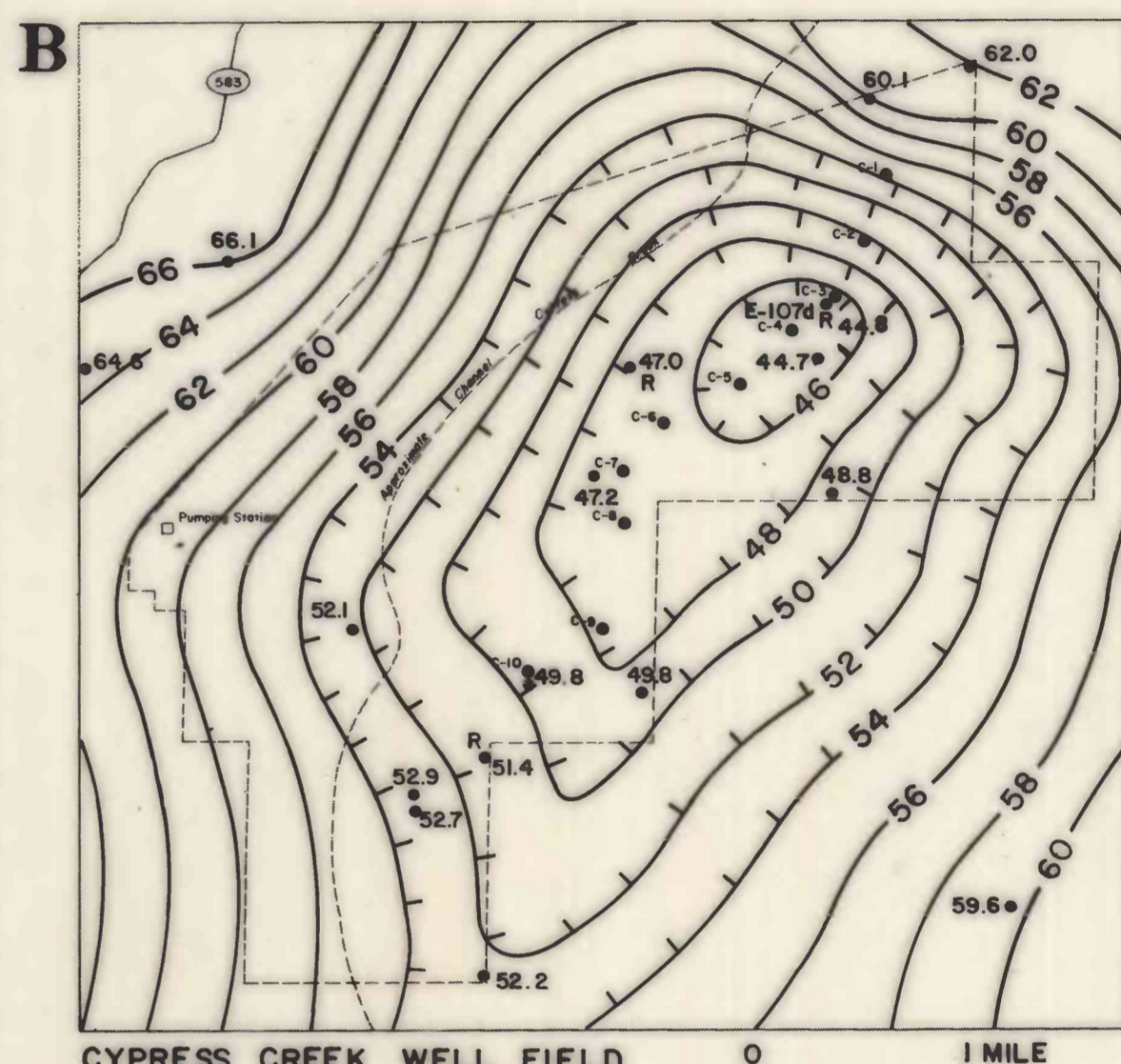
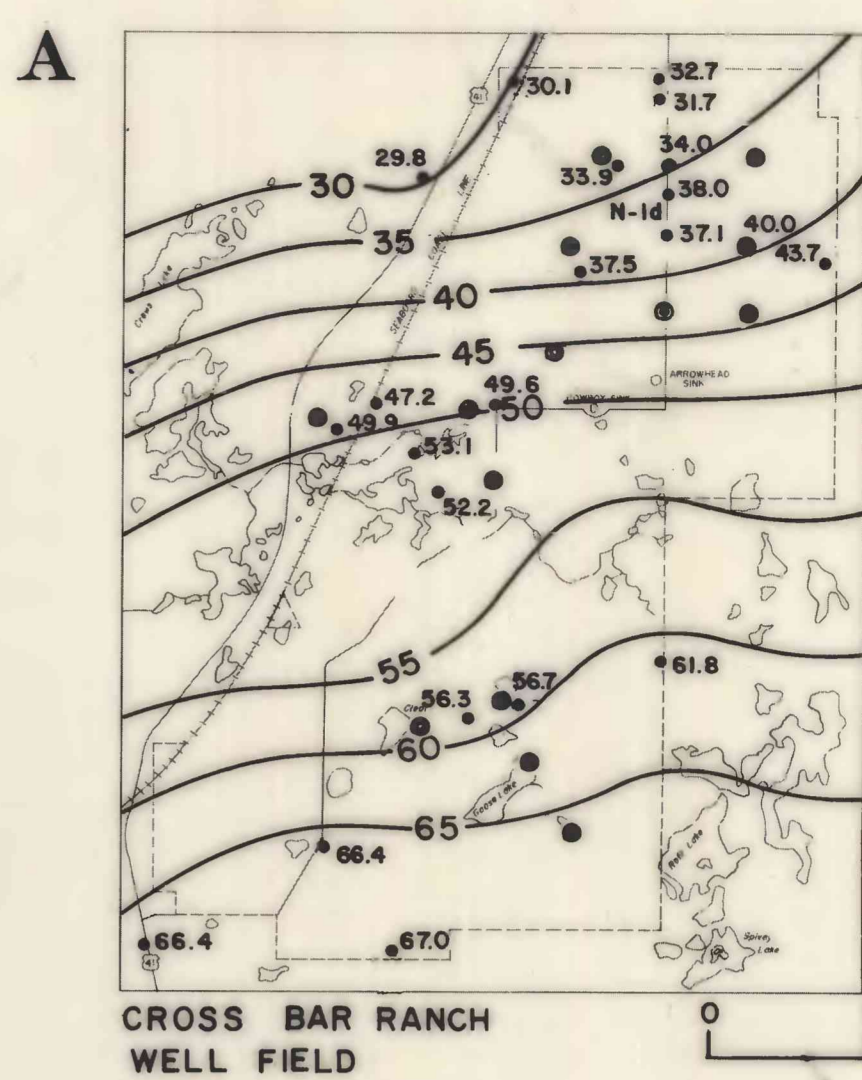
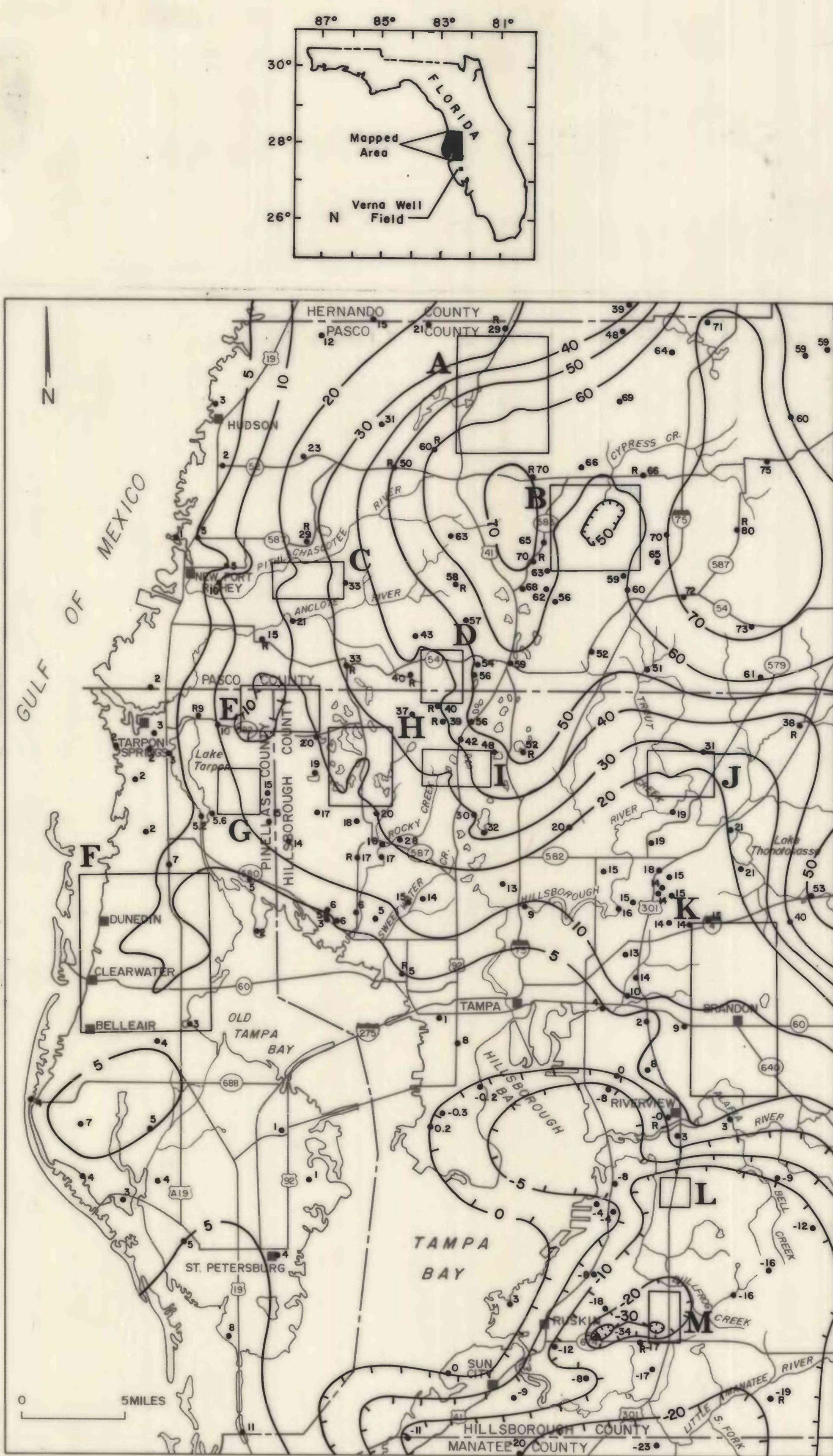


○ Surficial aquifer
● Floridan aquifer

EXPLANATION

- 50 — POTENTIOMETRIC CONTOUR—Shows altitude at which water level would have stood in tightly cased wells, May 18-23, 1981. Contour interval 2, 5, and 10 feet. Numbers indicate depressions. Datum is National Geodetic Vertical Datum of 1929 (NGVD)
- 5 ● title MUNICIPAL SUPPLY WELLS—Shows location and number or name of well
- 13 ● Pumping
- 44 ● 9d OBSERVATION WELL—Shows location of well and water level in feet above or below NGVD. Well number, where shown, indicates hydrograph shown in this report
- R = WATER-LEVEL RECORDER—Shows location of water-level recorder
- WELL-FIELD BOUNDARY—Shows generalized boundary of well-field area
- PROPERTY BOUNDARY—Shows boundary of property owned by operating agency
- A Well-field identification symbol

POTENTIOMETRIC SURFACE OF THE FLORIDAN AQUIFER



GROUND-WATER LEVELS IN SELECTED WELL FIELDS AND IN WEST-CENTRAL FLORIDA, MAY 1981

By
D.K. YOBBI and W.M. WOODHAM