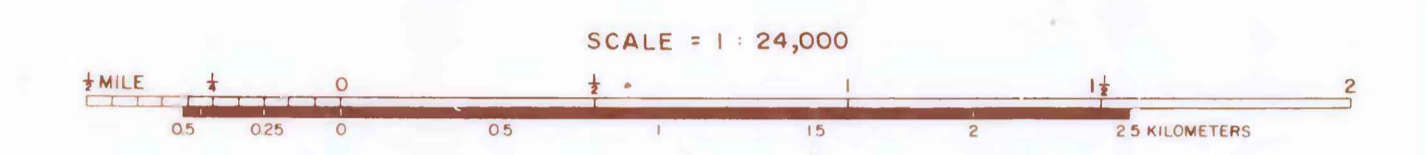
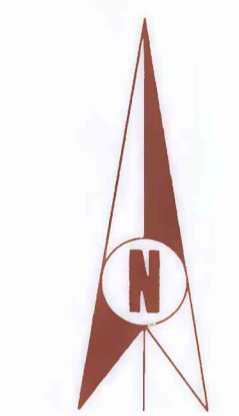


INPUT LEGEND

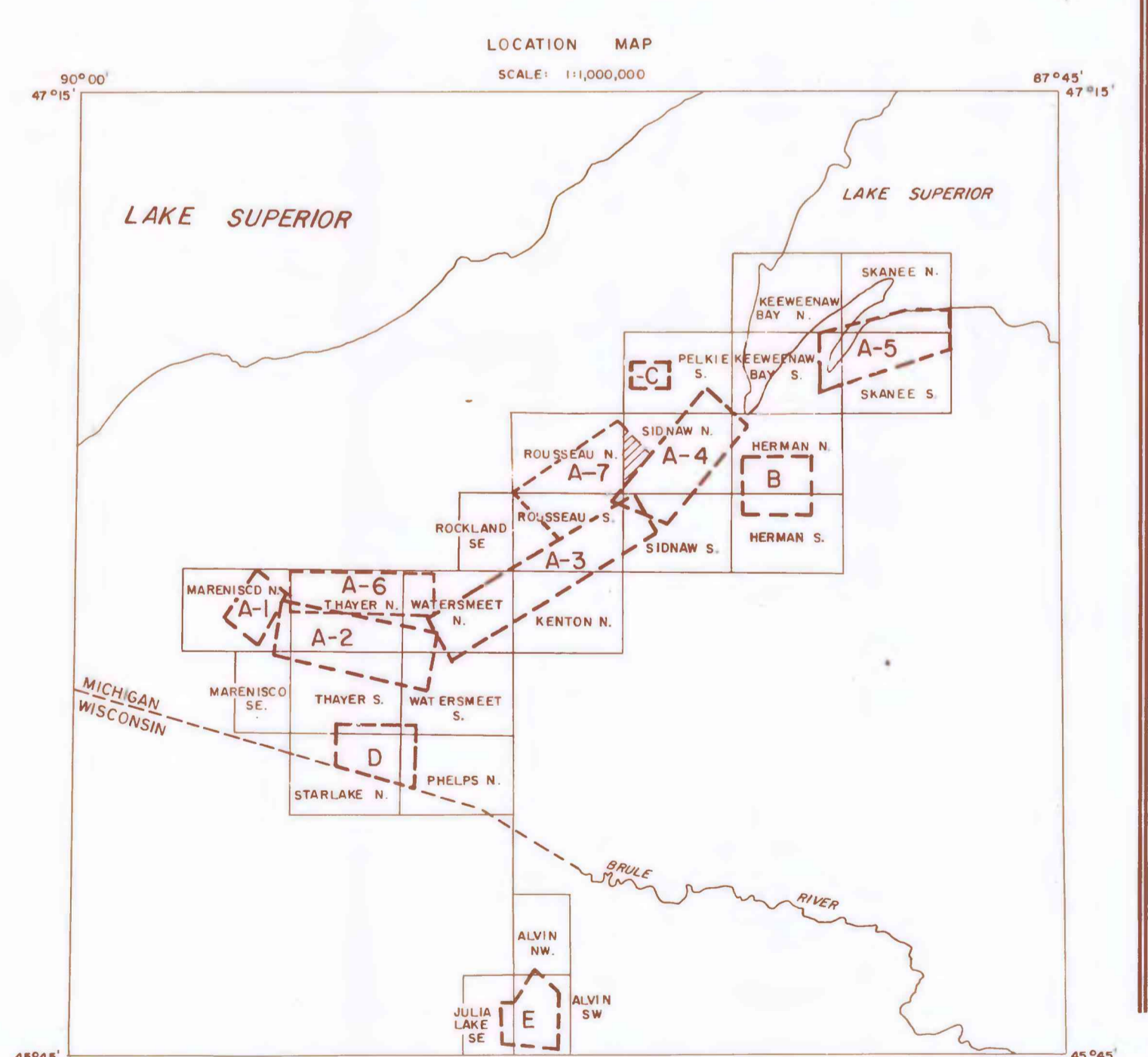
6 CHANNEL ANOMALY	—————
5 CHANNEL ANOMALY	—————
4 CHANNEL ANOMALY	—————
3 CHANNEL ANOMALY	—————
2 CHANNEL ANOMALY	—————
1 CHANNEL ANOMALY	—————
PEAK POSITION	—————
1ST AND 2TH CHANNEL AMPLITUDES	—————
ALTITUDE (feet)	—————
COINCIDENT MAGNETIC ANOMALY (Gauss)	—————
OFFSET MAGNETIC ANOMALY	—————
60 HZ WITH NORMAL ANOMALY	—————
60 HZ WITH ABNORMAL ANOMALY	—————



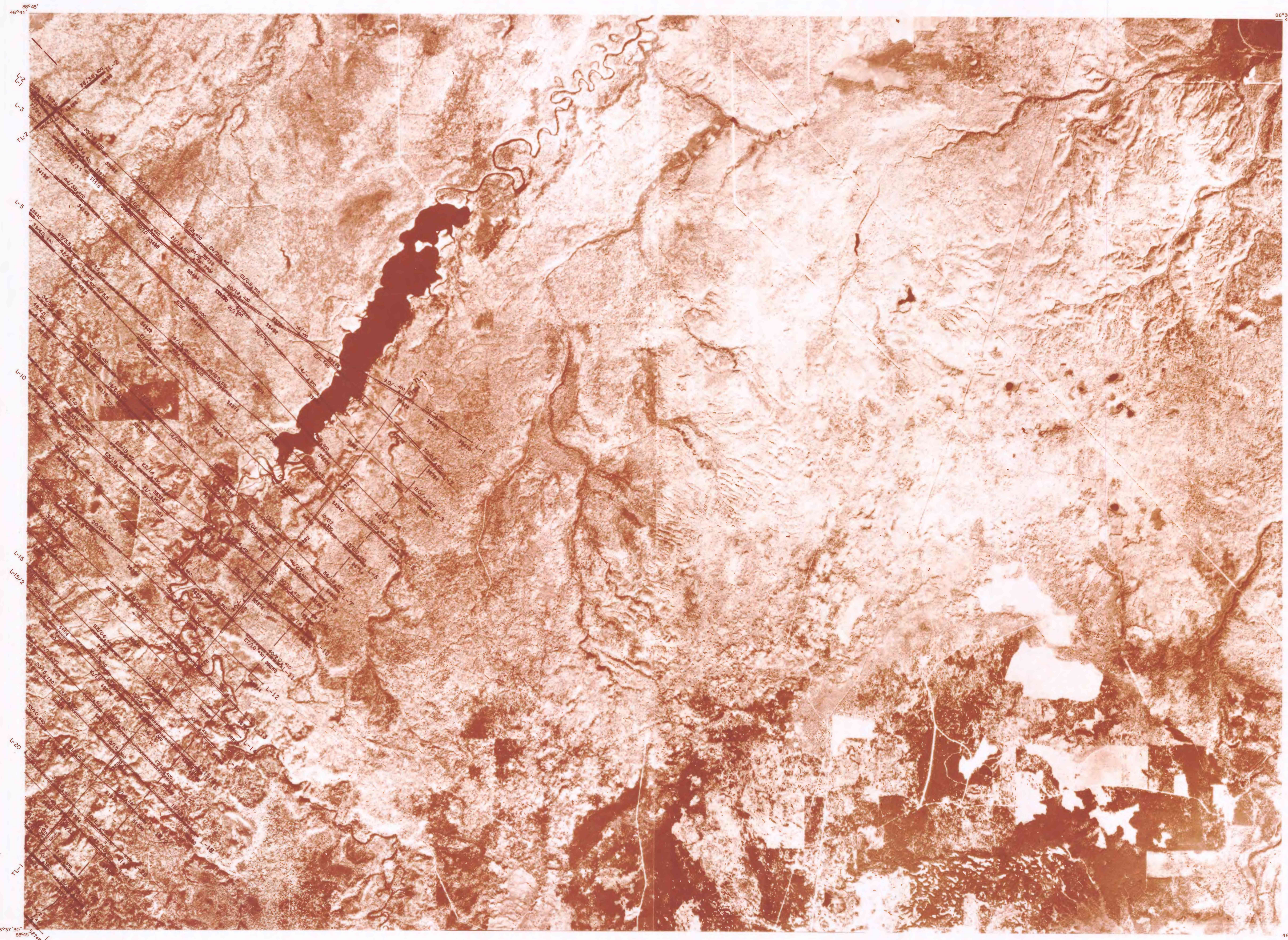
This map was prepared under contract to the U.S. Geological Survey and has not been reviewed for conformity with USGS editorial standards and stratigraphic nomenclature. Opinions and conclusions expressed herein do not necessarily represent those of the USGS. Any use of trade names is for descriptive purposes only and does not imply endorsement by the USGS.



"Airborne Electromagnetic and Magnetic Survey of parts of the Upper Peninsula of Michigan" by Geotrex Ltd., with an introduction by W. D. Heran.



	SURVEYED & COMPILED BY	FOR
	geotrex	U.S.G.S.
COMBINED AIRBORNE EM AND MAGNETOMETER SURVEY BARRINGER "INPUT" ELECTROMAGNETIC SYSTEM		
AREA A-7		ELECTROMAGNETIC MAP
SIDRAW N	HORIZONTAL CONTROL	LOCATION MICHIGAN
SCALE: 1:24,000	BASED ON	FLIGHT ALTITUDE 400' MTC
		FLOWN IN NOVEMBER, 1980
		GEOTREX PROJECT NO. 83-375



46°57'30" N
88°57'30" W

46°57'30" N
88°57'30" W