

EXPLANATION

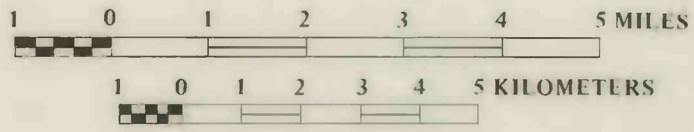
□ VALLEY-FILL DEPOSITS

■ CONSOLIDATED ROCKS

--- FAULT—Dashed where approximately located,
dotted where concealed

— 5000 — LINE OF EQUAL DEPTH TO BEDROCK—in
feet below land surface. Interval is 1,000 feet.
Dashed where estimated

SCALE 1:125,000



Base from U.S. Bureau of Land
Management 1:100,000 Quadrangles

Geology modified from Wilden and
Speed (1974) and Johnson (1977)

MAP SHOWING DEPTH TO BEDROCK IN DIXIE VALLEY, CHURCHILL AND PERSHING COUNTIES, NEVADA