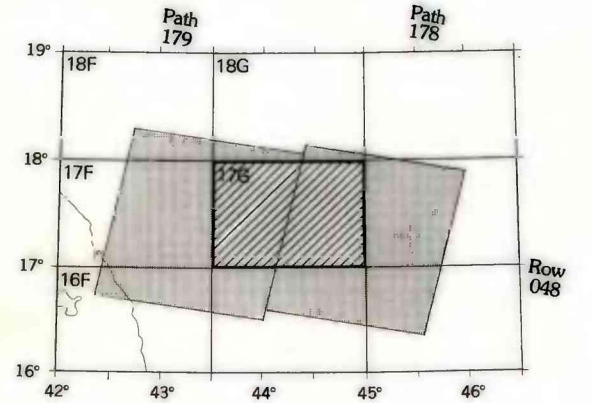


Satellite Image and Adjoining Sheet Index

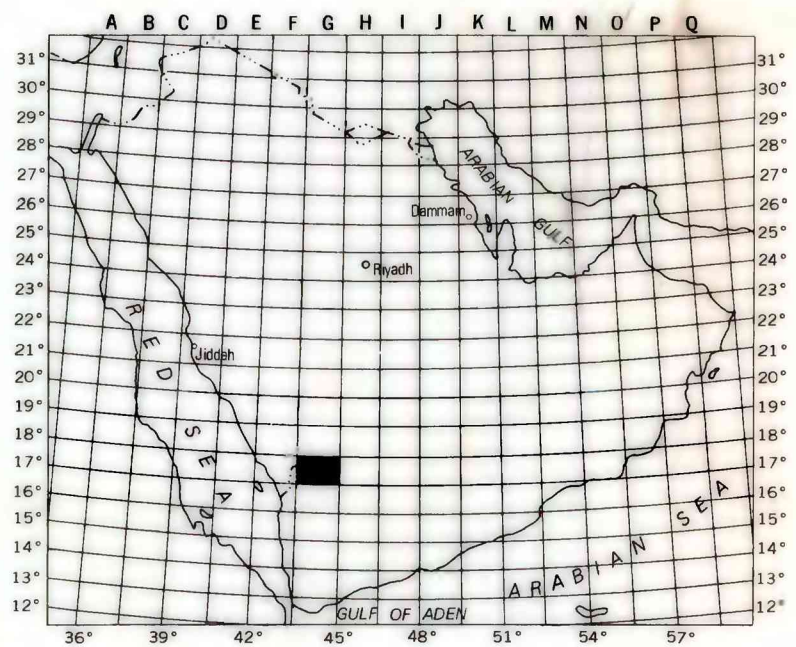


Path/row	Image ID	Date acquired
178/048	2257-06421-7	Oct. 6, 1975
179/048	2276-06475-7	Oct. 25, 1975

Imagery acquired by NASA Landsat
Multispectral Scanner (MSS)

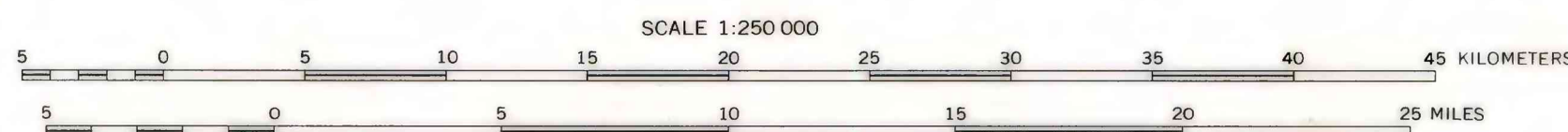
Adjoining Sheet Index

18F Abhā	18G Bi'r Ṭīmah
17E Wādī Baysh	17G Najrān
16F Jizān	



Index to 1:250,000-scale Landsat image maps
of the Arabian Peninsula showing location
of the Najran Quadrangle, 17G

Prepared by the United States Geological Survey for the Kingdom of Saudi Arabia from computer enhanced Landsat MSS band 7 imagery.
Imagery controlled to photoidentified ground positions. The root-mean-square error in position of well-defined features in relation to the graticule is approximately 65 meters.
Transverse Mercator Projection



Magnetic declination for 1980
is 1°15' E over entire area.
Annual rate of change 3' E

U.S. GEOLOGICAL SURVEY
OPEN FILE REPORT 82-215
This map is preliminary and
has not been reviewed for
conformity with U.S.G.S. standards.

LANDSAT IMAGE MAP OF THE
NAJRAN QUADRANGLE
SHEET 17G
KINGDOM OF SAUDI ARABIA
1982