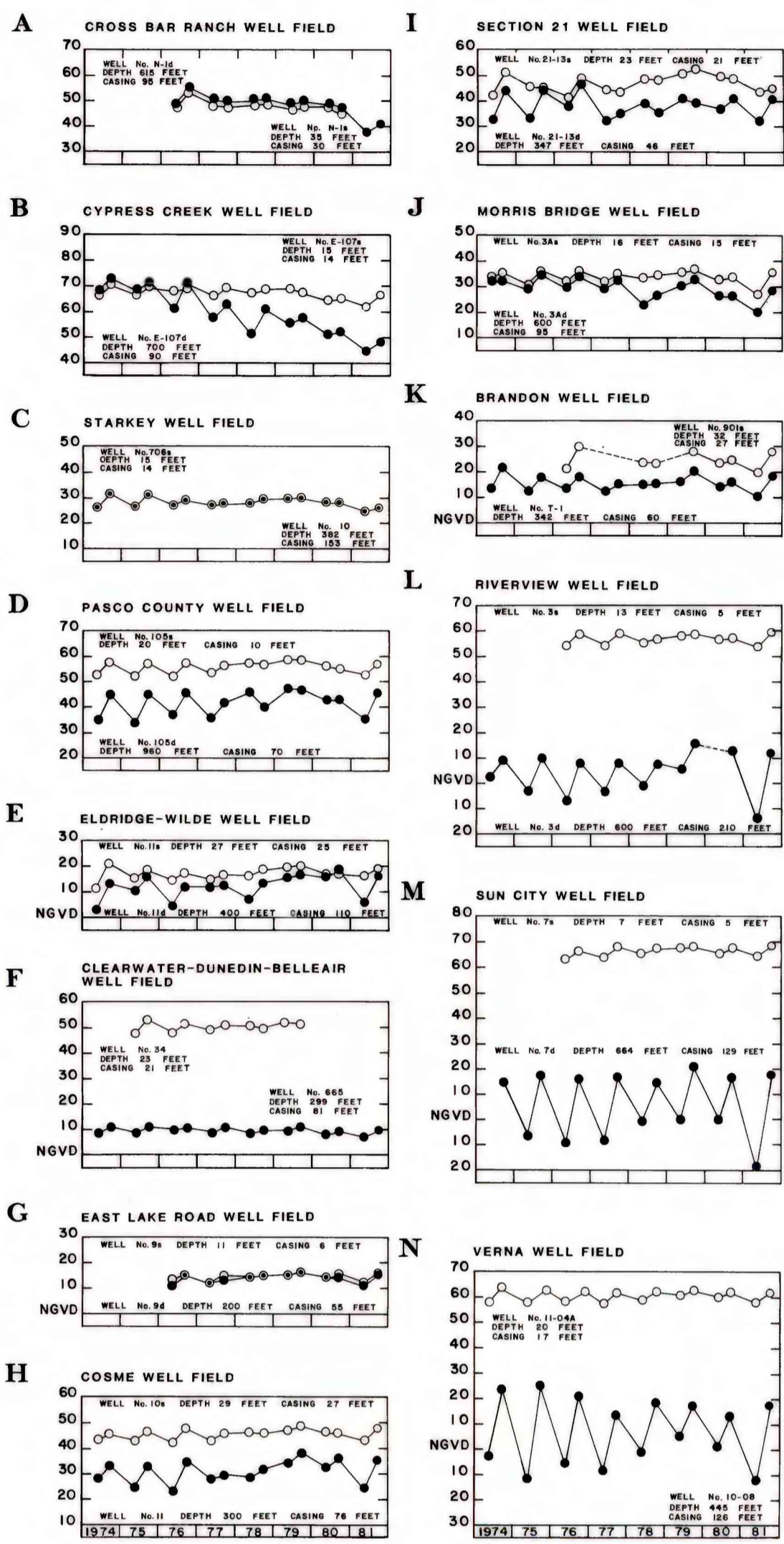
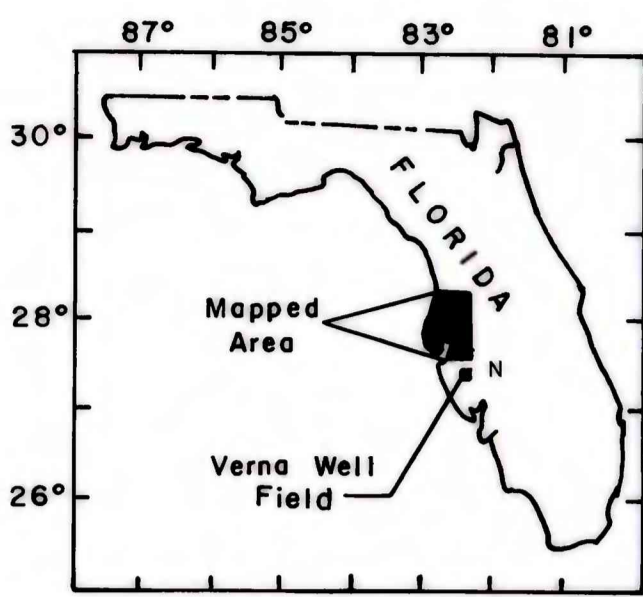


POTENTIOMETRIC SURFACE OF THE FLORIDAN AQUIFER

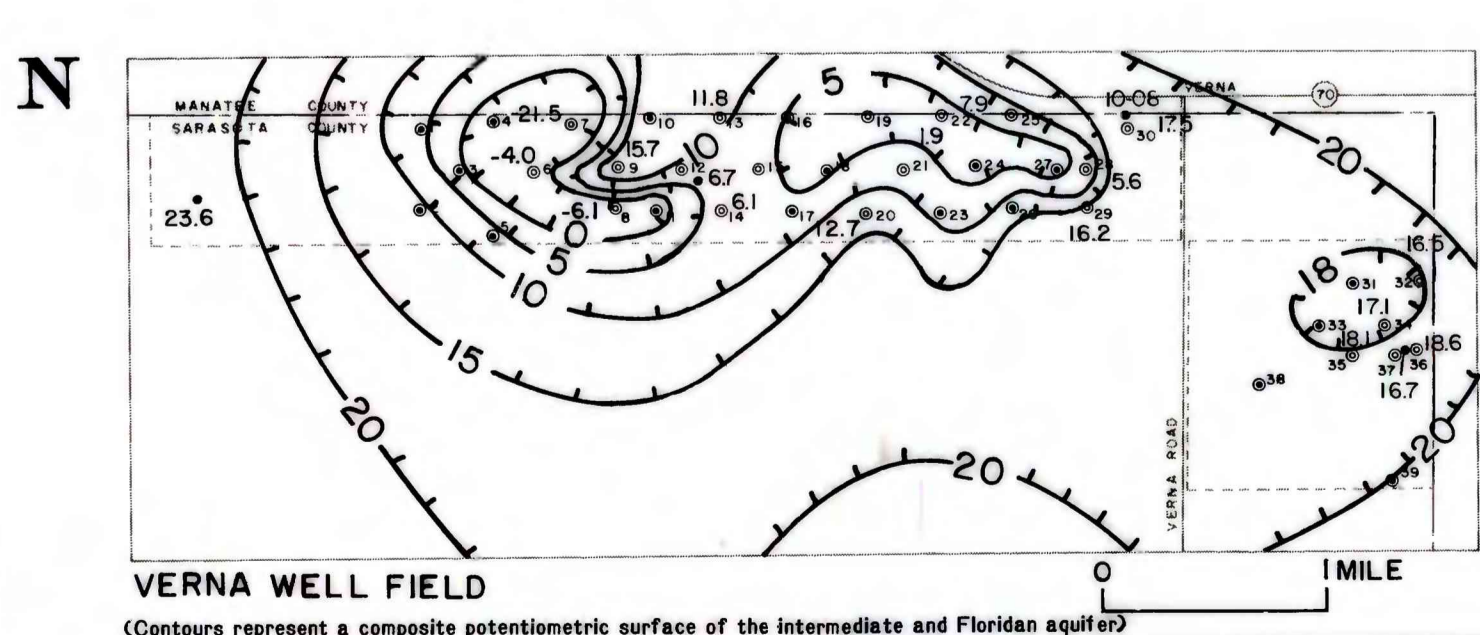
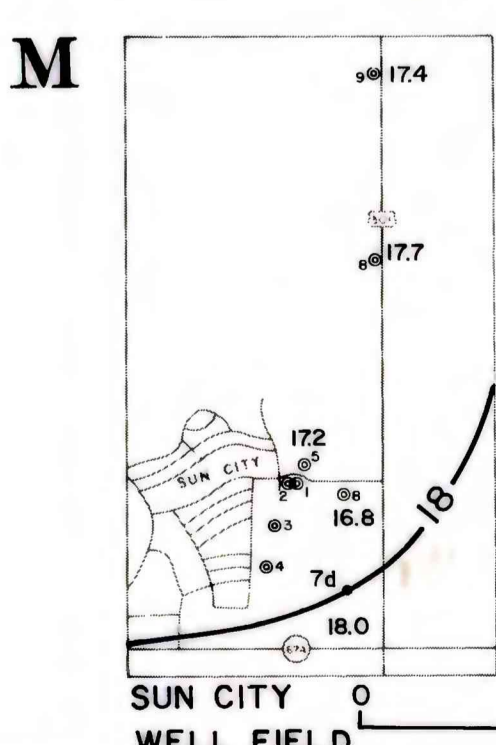
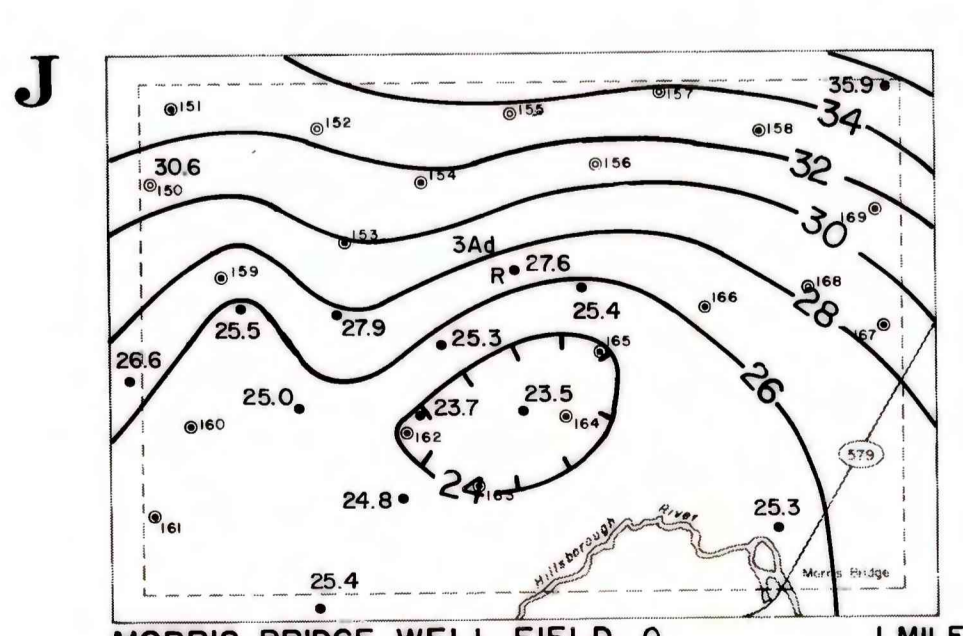
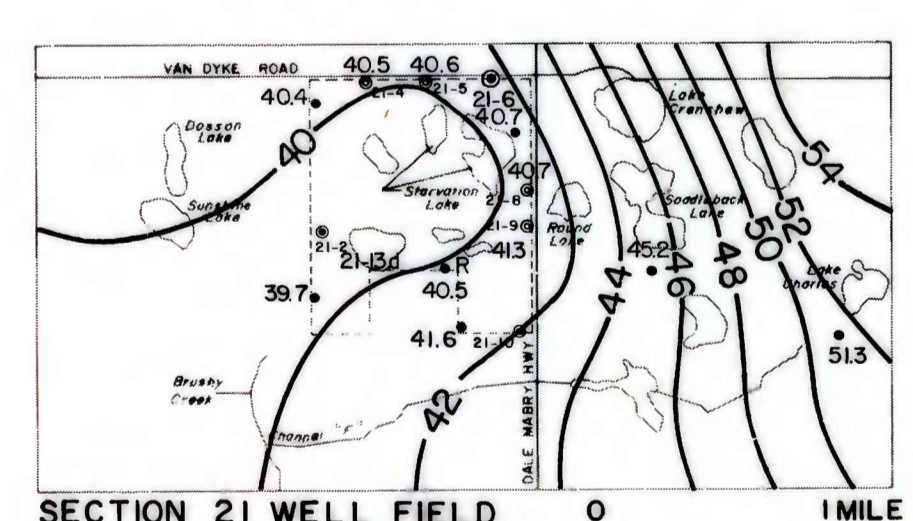
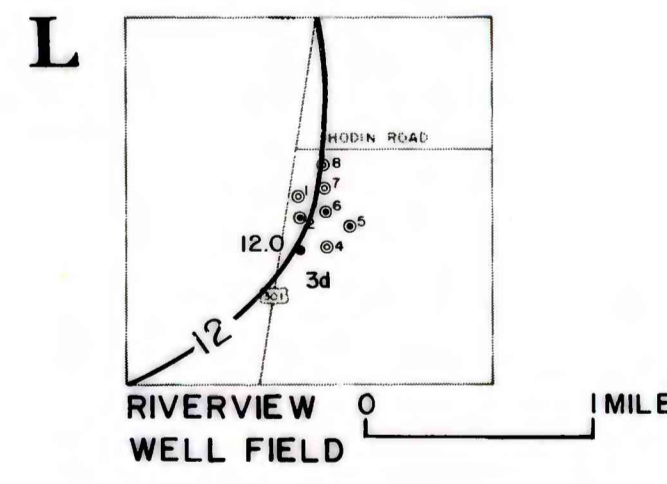
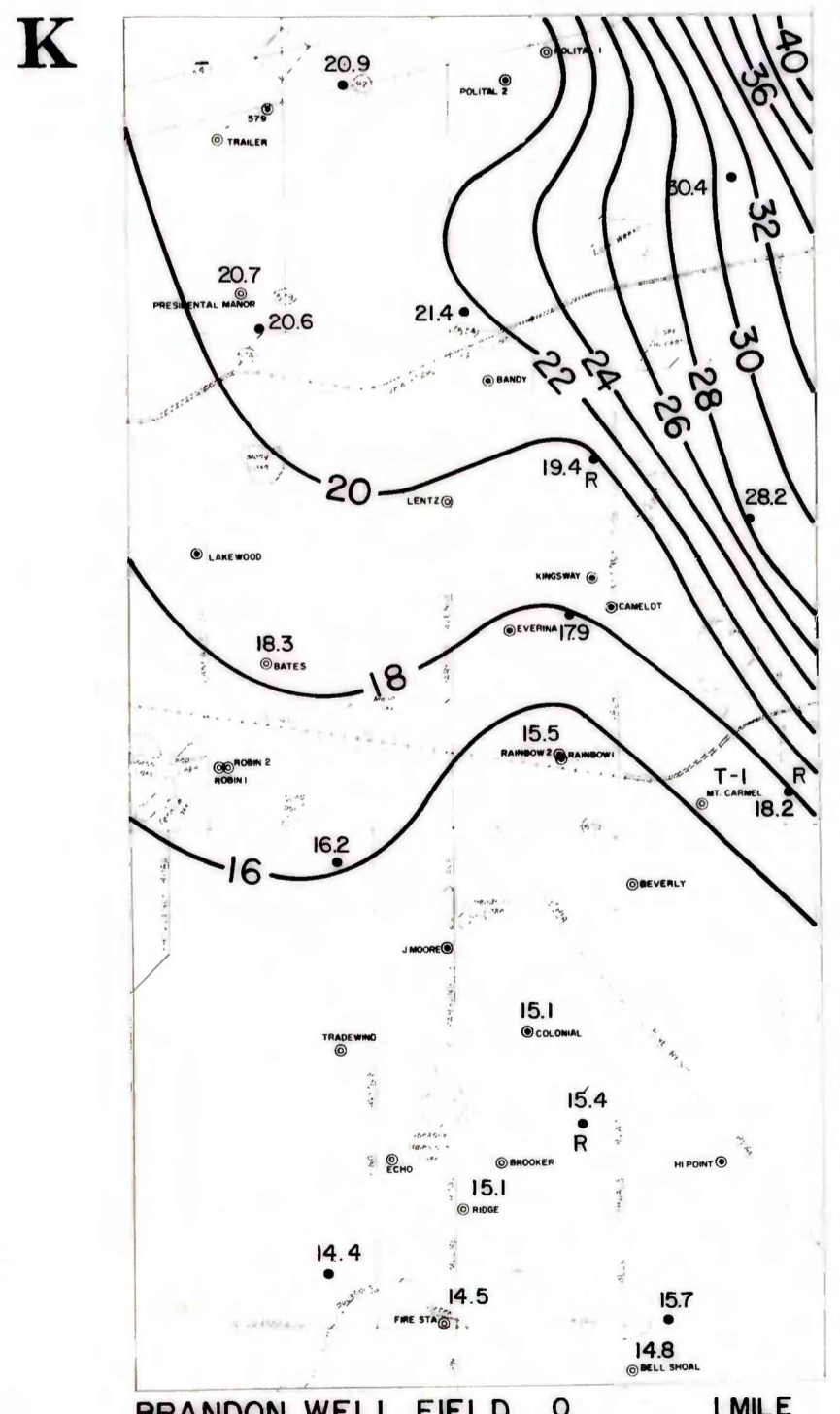
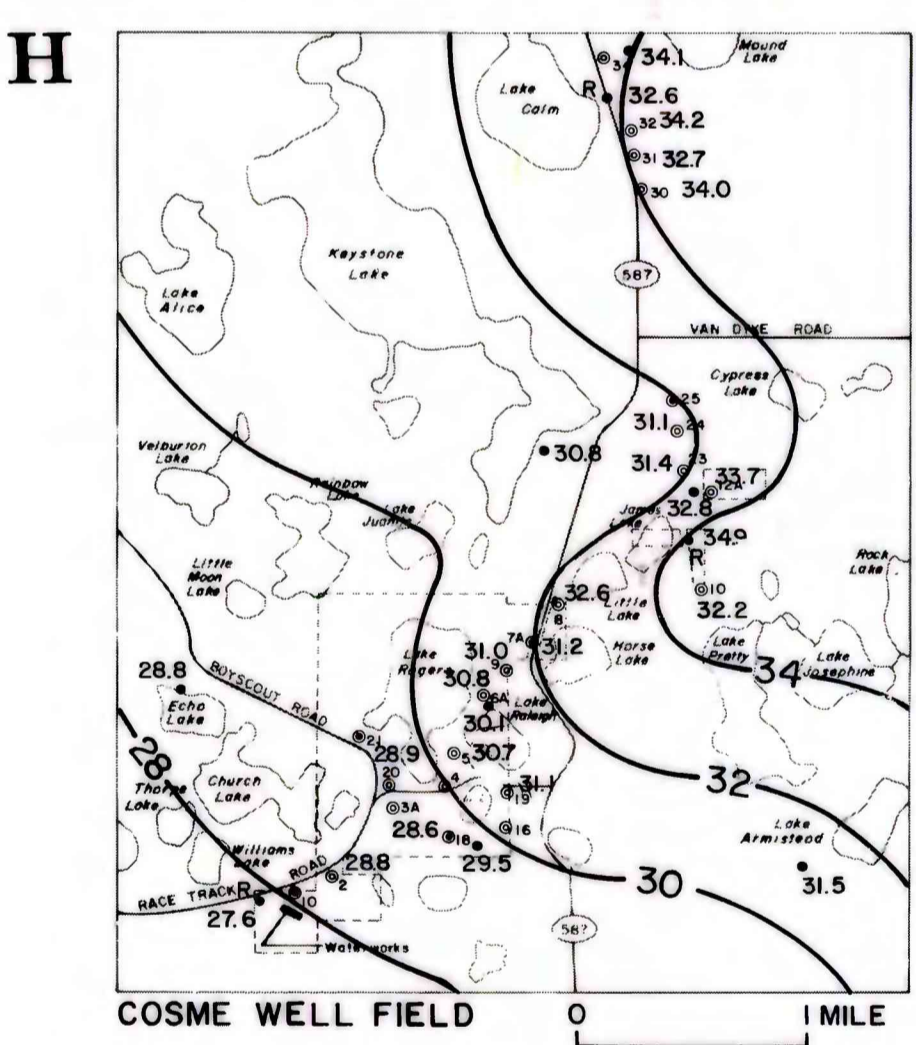
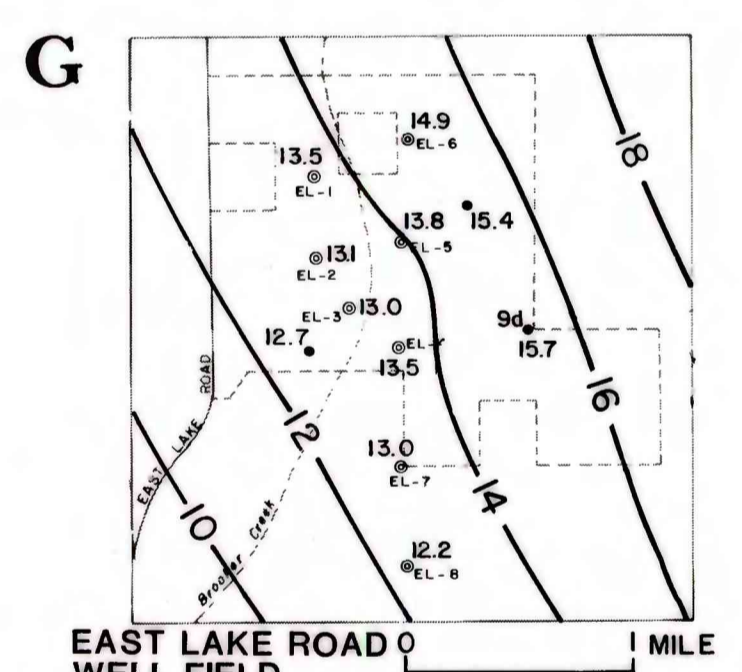
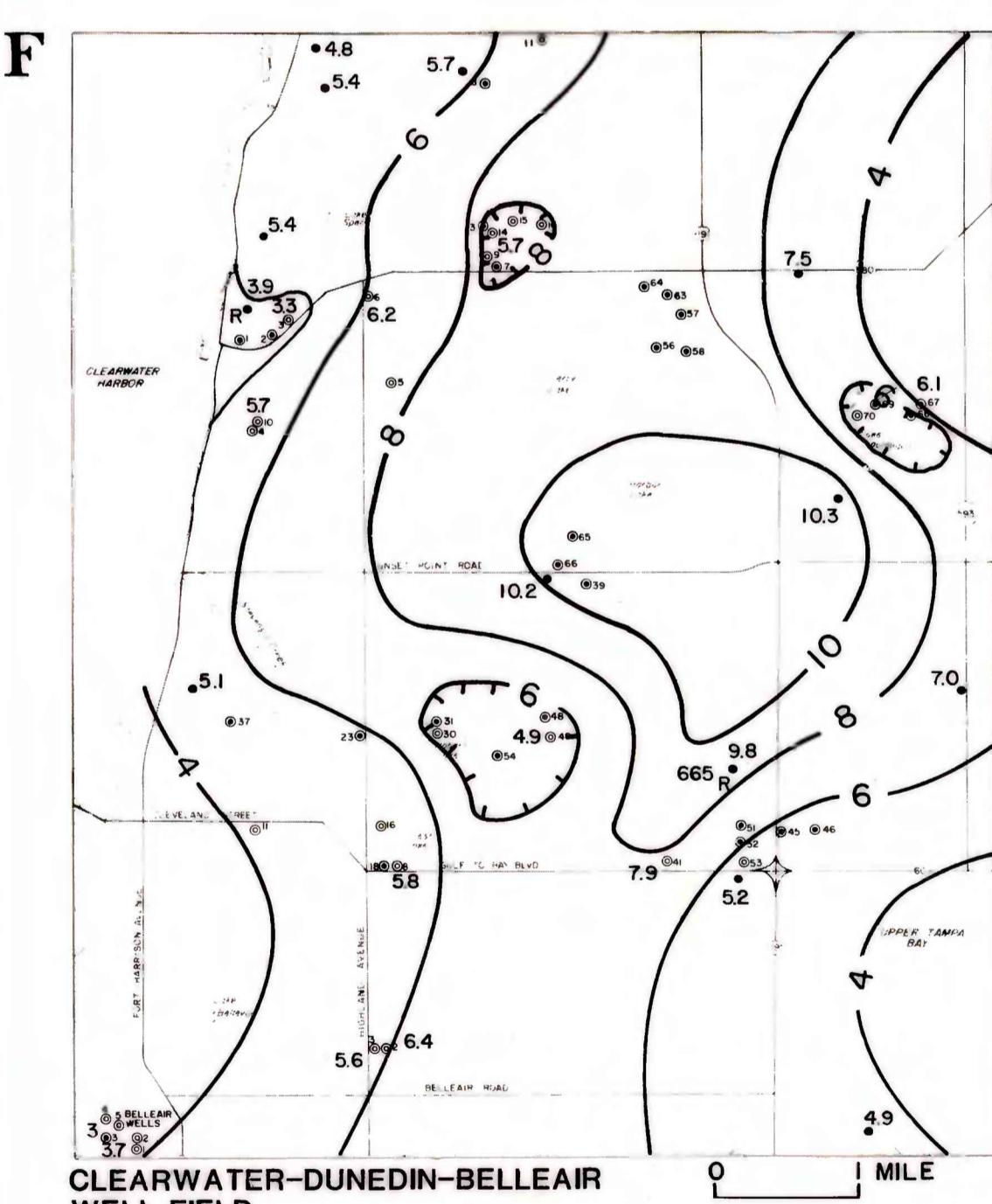
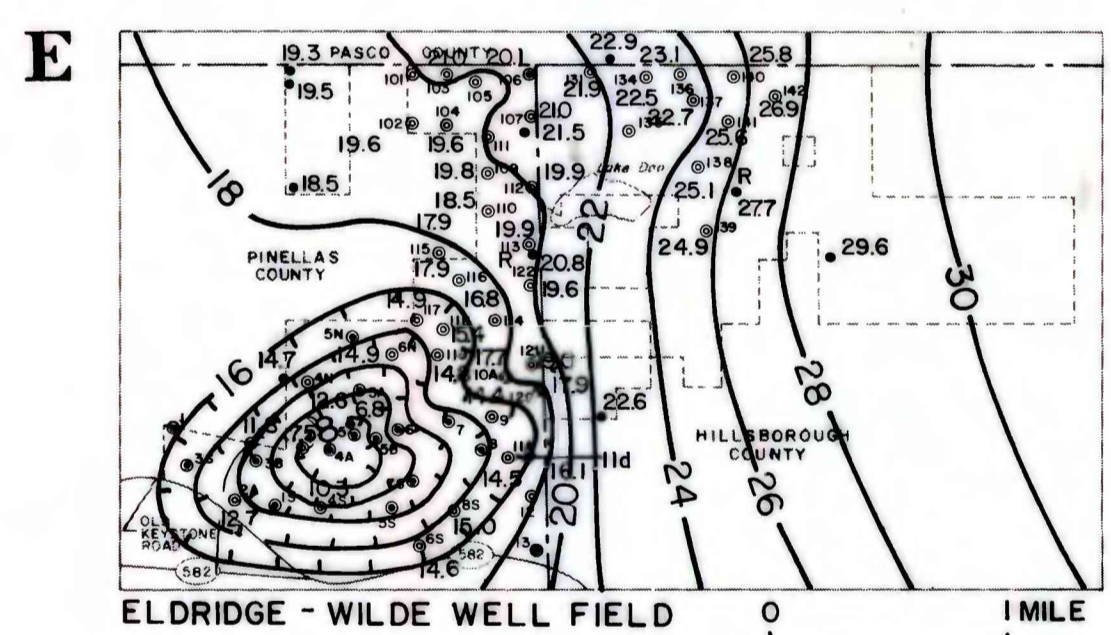
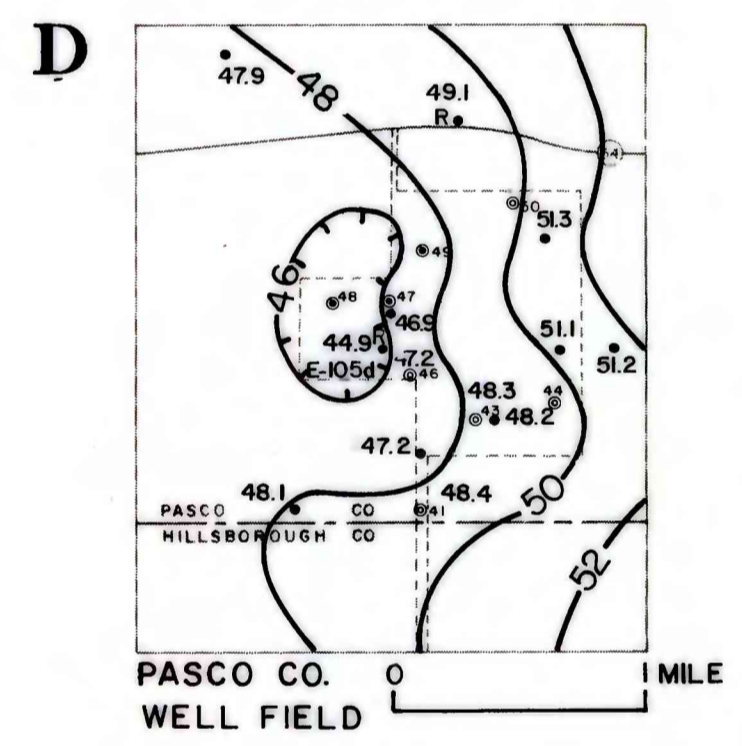
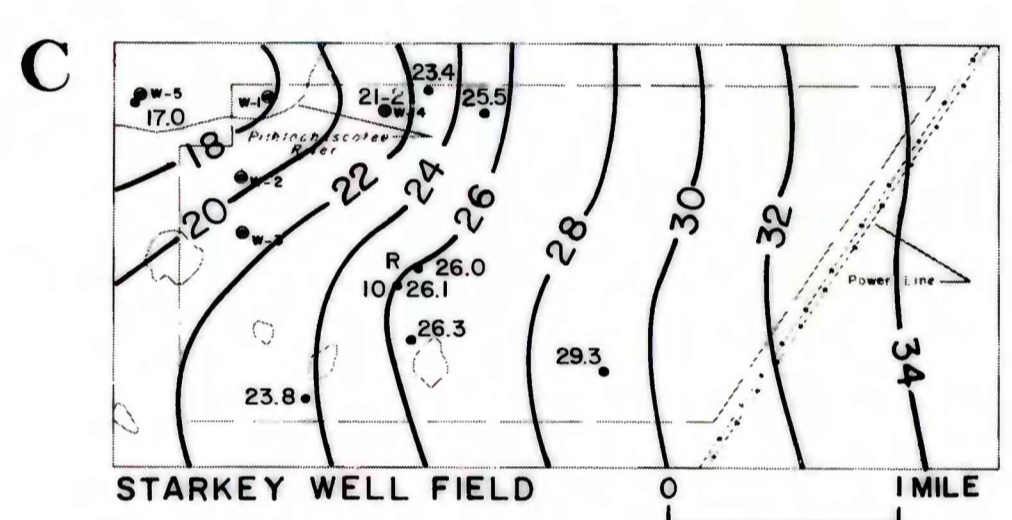
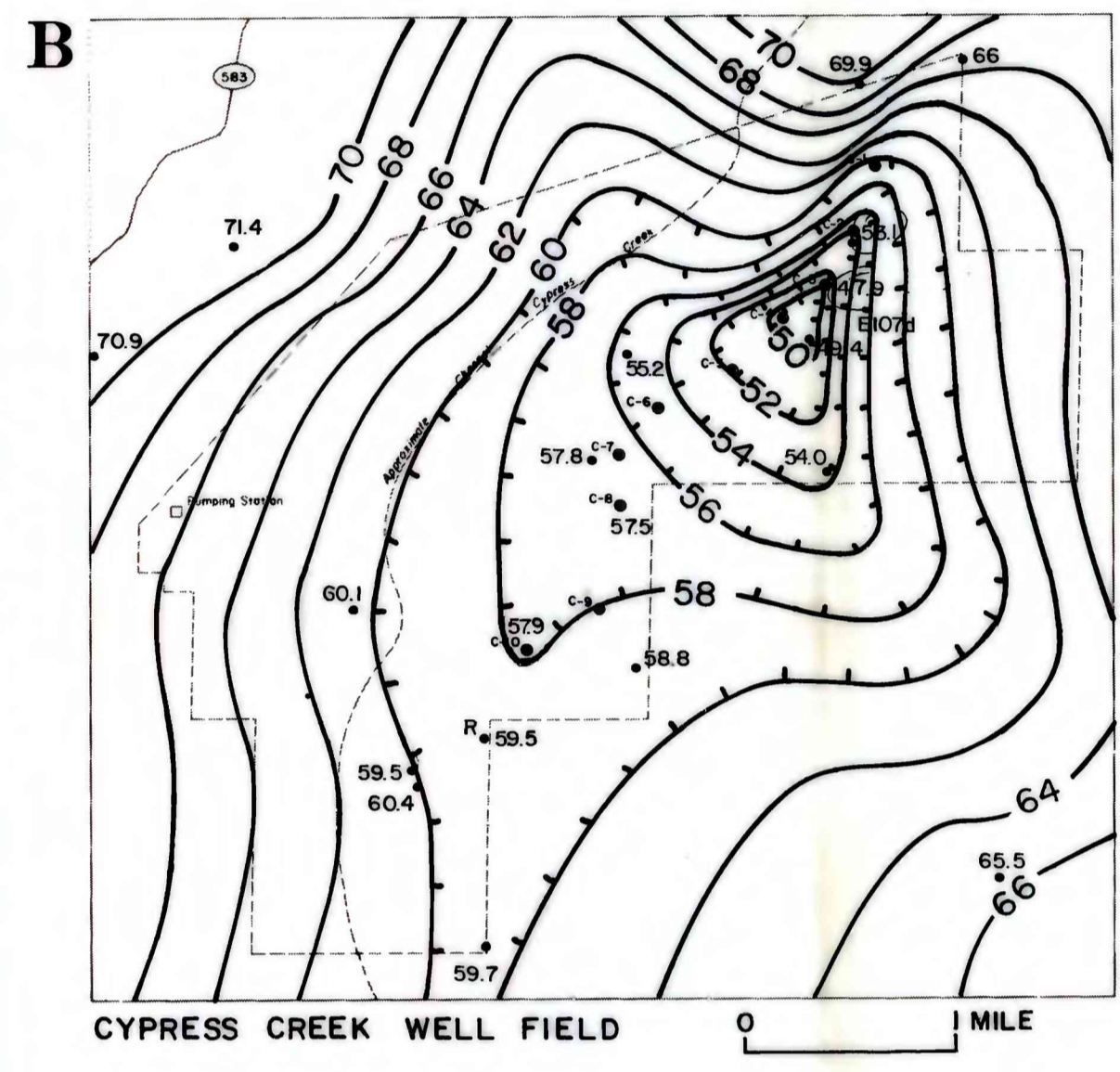
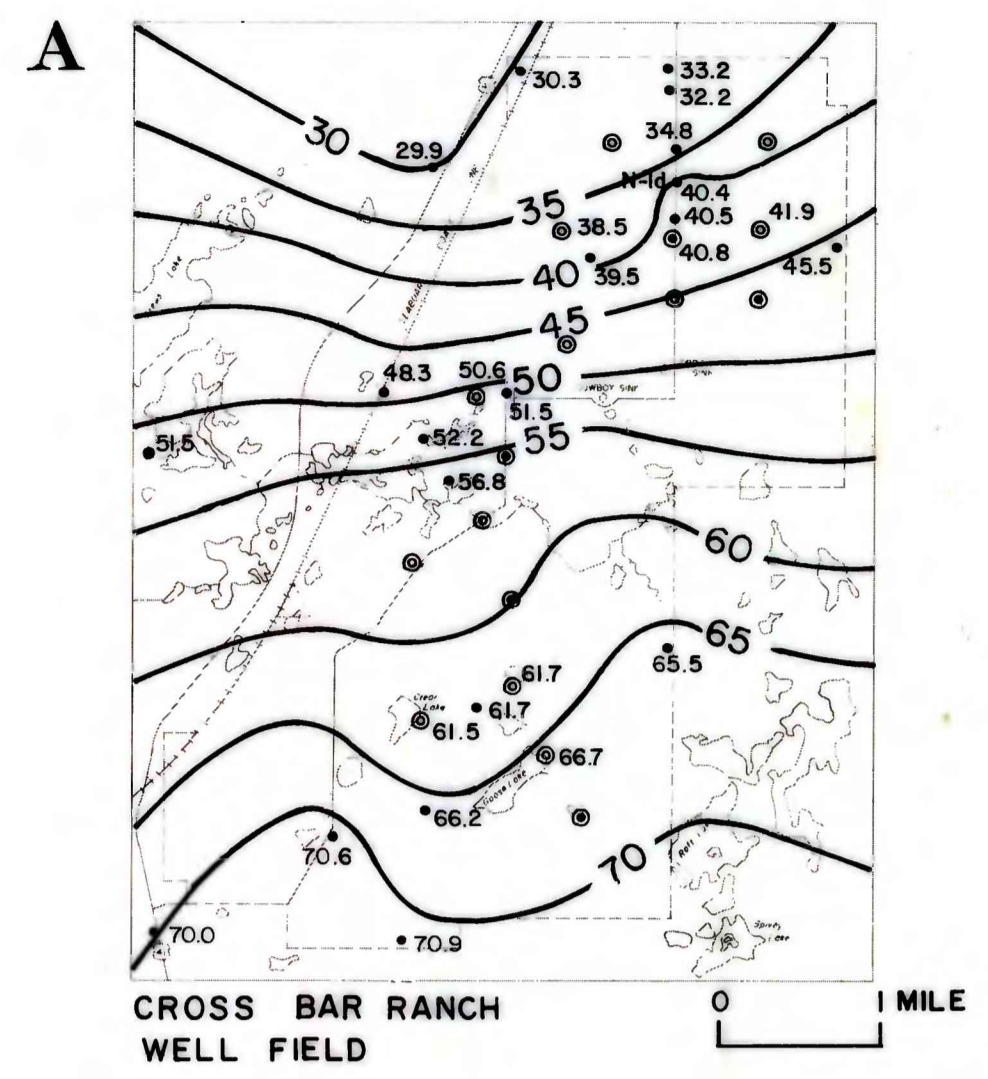
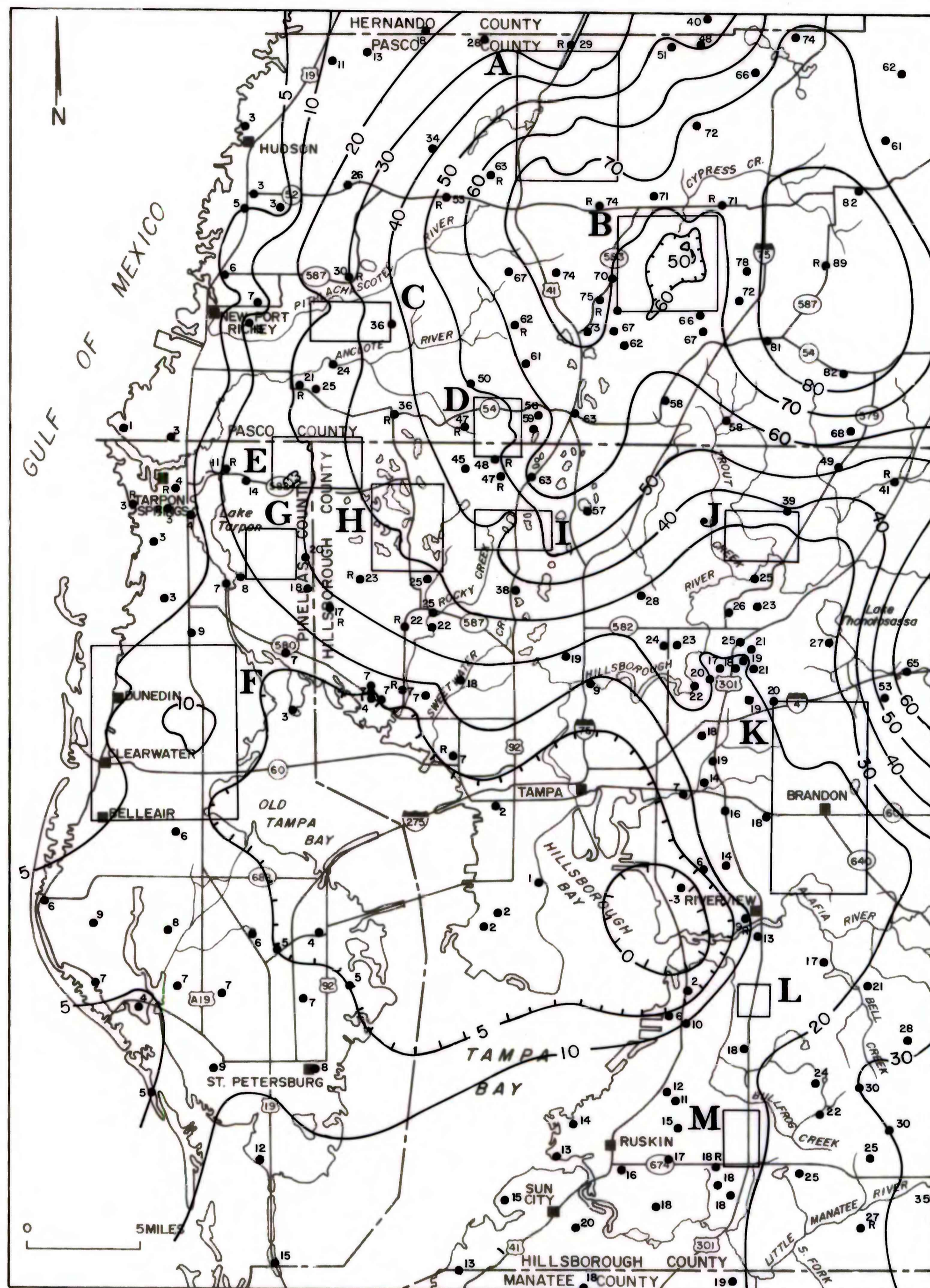
HYDROGRAPHS SHOWING MAY AND SEPTEMBER WATER LEVELS OF
SELECTED WELLS TAPPING THE SURFICIAL AND FLORIDAN AQUIFERS



○ Surficial aquifer
● Floridan aquifer

EXPLANATION

- 20— POTENTIOMETRIC CONTOUR—Shows altitude at which water level would have stood in lightly cased wells, September 21-25. Contour interval 2, 5, and 10 feet. Numbers indicate depressions. Datum is National Geodetic Vertical Datum of 1929 (NGVD).
- 13● MUNICIPAL SUPPLY WELLS—Shows location, number or name, and where shown, water level in feet above or below NGVD. Open symbol indicates well was idle. Solid symbol indicates well was pumped during monitoring.
- 44●94 OBSERVATION WELL—Shows location of well and water level in feet above or below NGVD. Well number, where shown, indicates hydrograph shown in this report.
- R WATER-LEVEL RECORDER—Shows location of water-level recorder.
- WELL-FIELD BOUNDARY—Shows generalized boundary of well-field areas.
- — — PROPERTY BOUNDARY—Shows boundary of property owned by operating agency.
- E Well-field identification letter.



GROUND-WATER LEVELS IN SELECTED WELL FIELDS AND IN WEST-CENTRAL FLORIDA, SEPTEMBER 1981

By

D. K. YOBBI and G. L. BARR