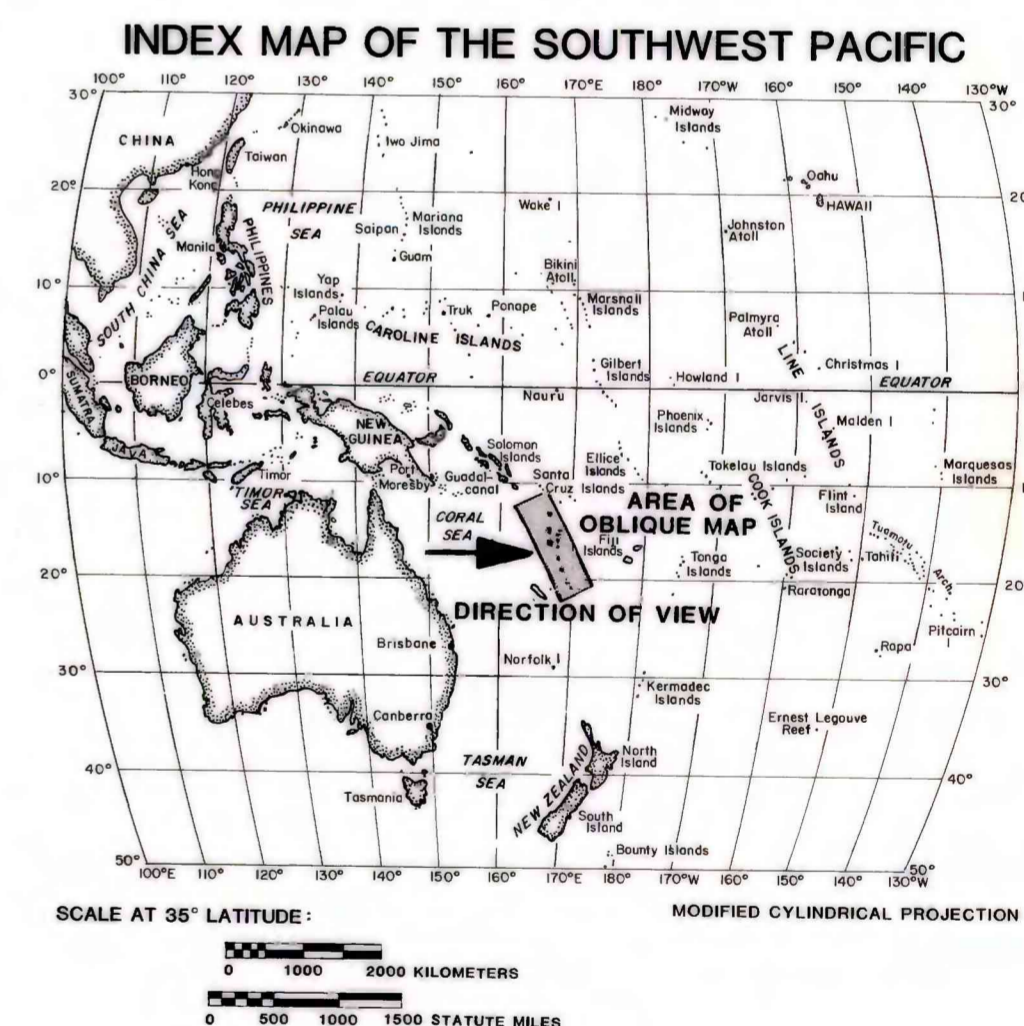
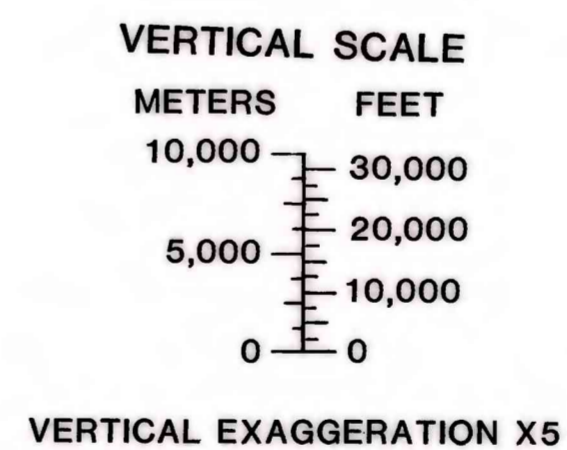
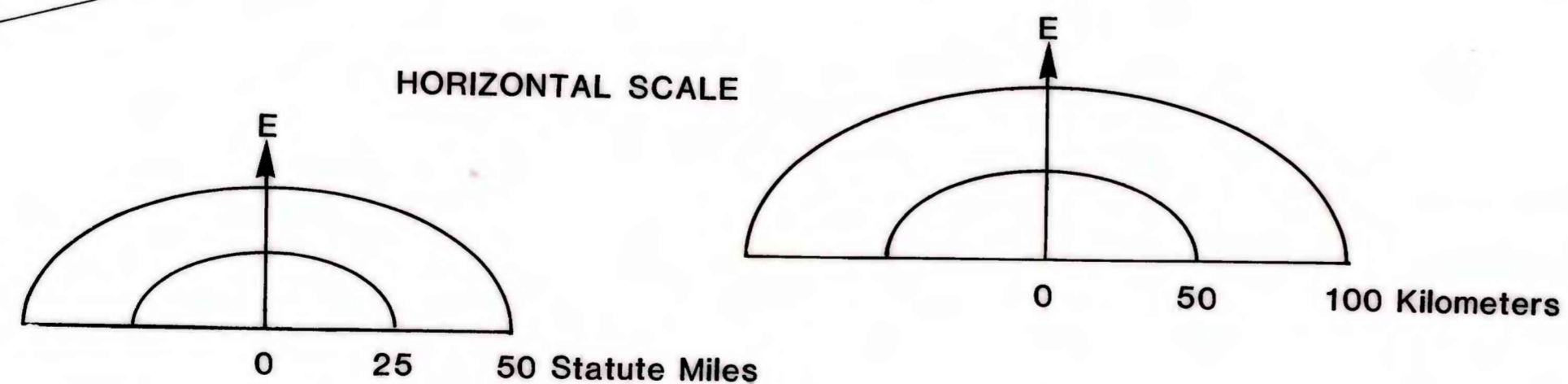
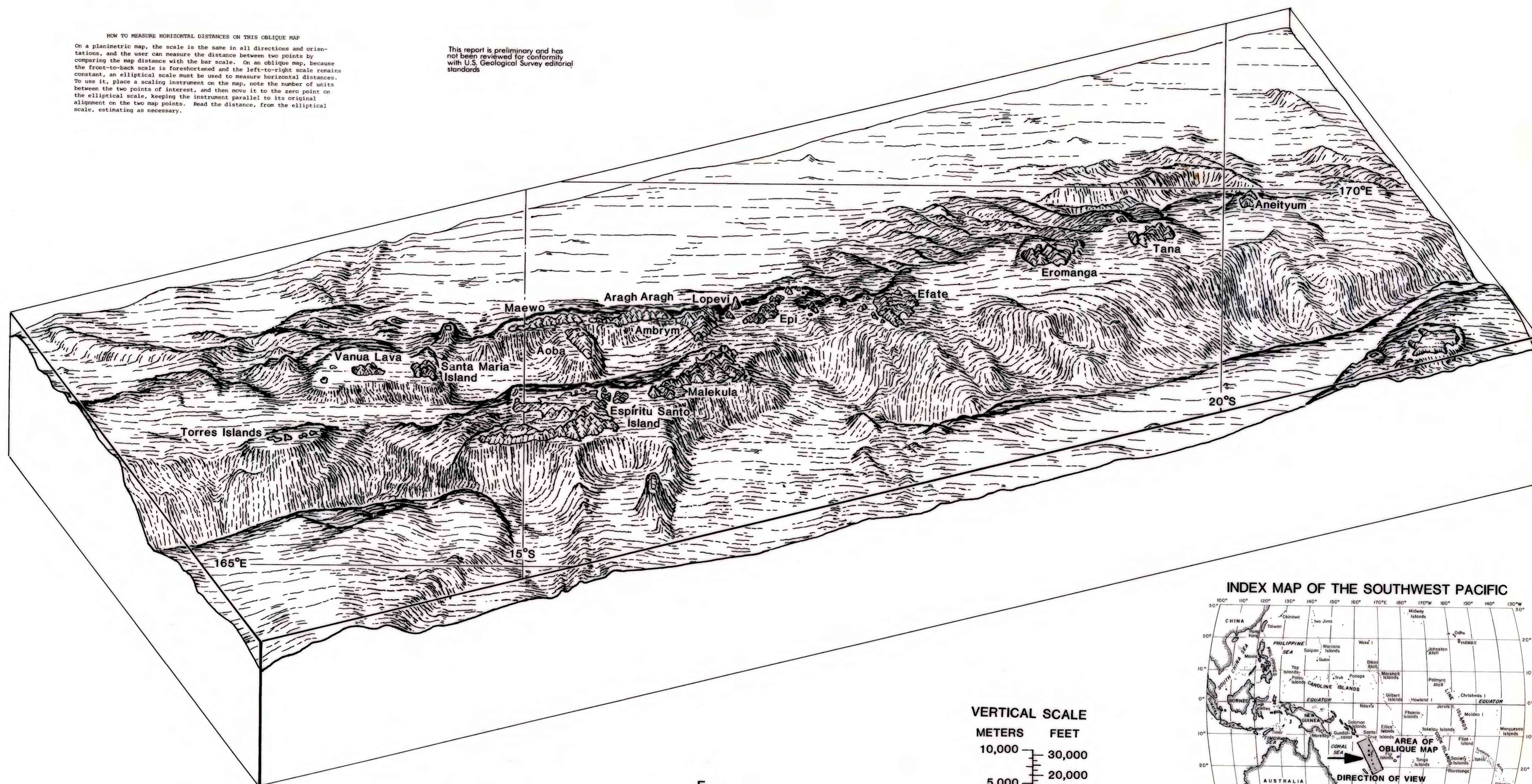


HOW TO MEASURE HORIZONTAL DISTANCES ON THIS OBLIQUE MAP
On a planimetric map, the scale is the same in all directions and orientations, and the user can measure the distance between two points by comparing the map distance with the bar scale. On an oblique map, because the front-to-back scale is foreshortened and the left-to-right scale remains constant, an elliptical scale must be used to measure horizontal distances. To use it, place a scaling instrument on the map, note the number of units between the two points of interest, and then move it to the zero point on the elliptical scale, keeping the instrument parallel to its original alignment on the two map points. Read the distance, from the elliptical scale, estimating as necessary.

This report is preliminary and has not been reviewed for conformity with U.S. Geological Survey editorial standards.



OBLIQUE MAP OF THE REPUBLIC OF VANUATU, SOUTHWEST PACIFIC

by
Tau Rho Alpha, William A. Austin, and James M. Morley