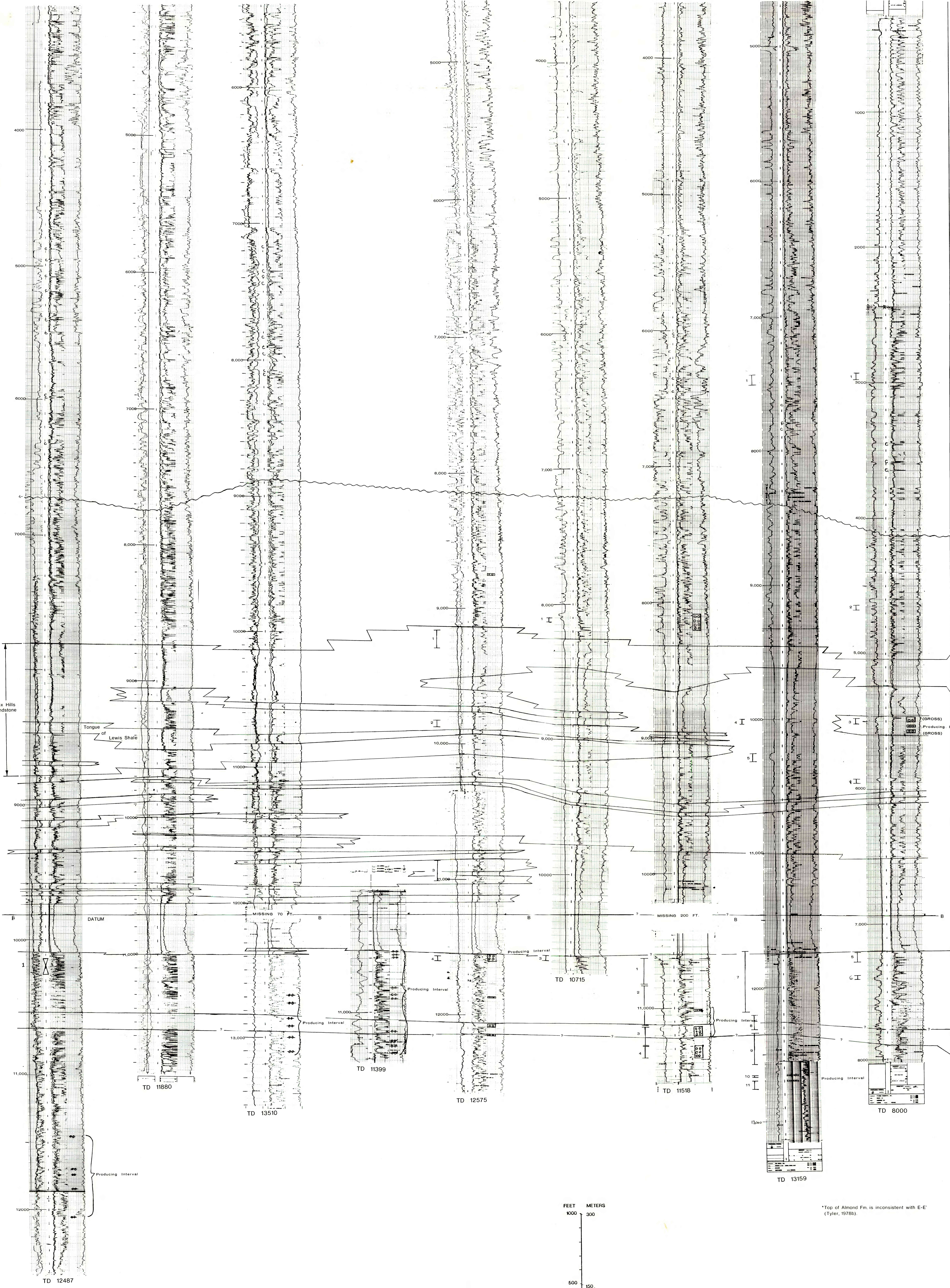


CENOZOIC
TERTIARY
AND

PALEOCENE

MESOZOIC
CRETACEOUS
UPPER CRETACEOUS

and Fort Union Formations, undivided
Lance Formation
Fox Hills Sandstone
Lewis Shale
Almond Formation
MESAVERDE GROUP
Fossiliferous Horizontal Member and Allen Ridge Formations, undivided



*Top of Almond Fm. is inconsistent with E-E (Tyler, 1978).

PRELIMINARY CHART SHOWING ELECTRIC LOG CORRELATION SECTION I-I' OF SOME UPPER CRETACEOUS AND TERTIARY ROCKS, WASHAKIE BASIN, WYOMING

BY

THEODORE F. TYLER, H. BUCUREL-WHITE, AND J.R. PETERSON