

R. 5 E.

R. 6 E.

116° 15' R. 7 E.

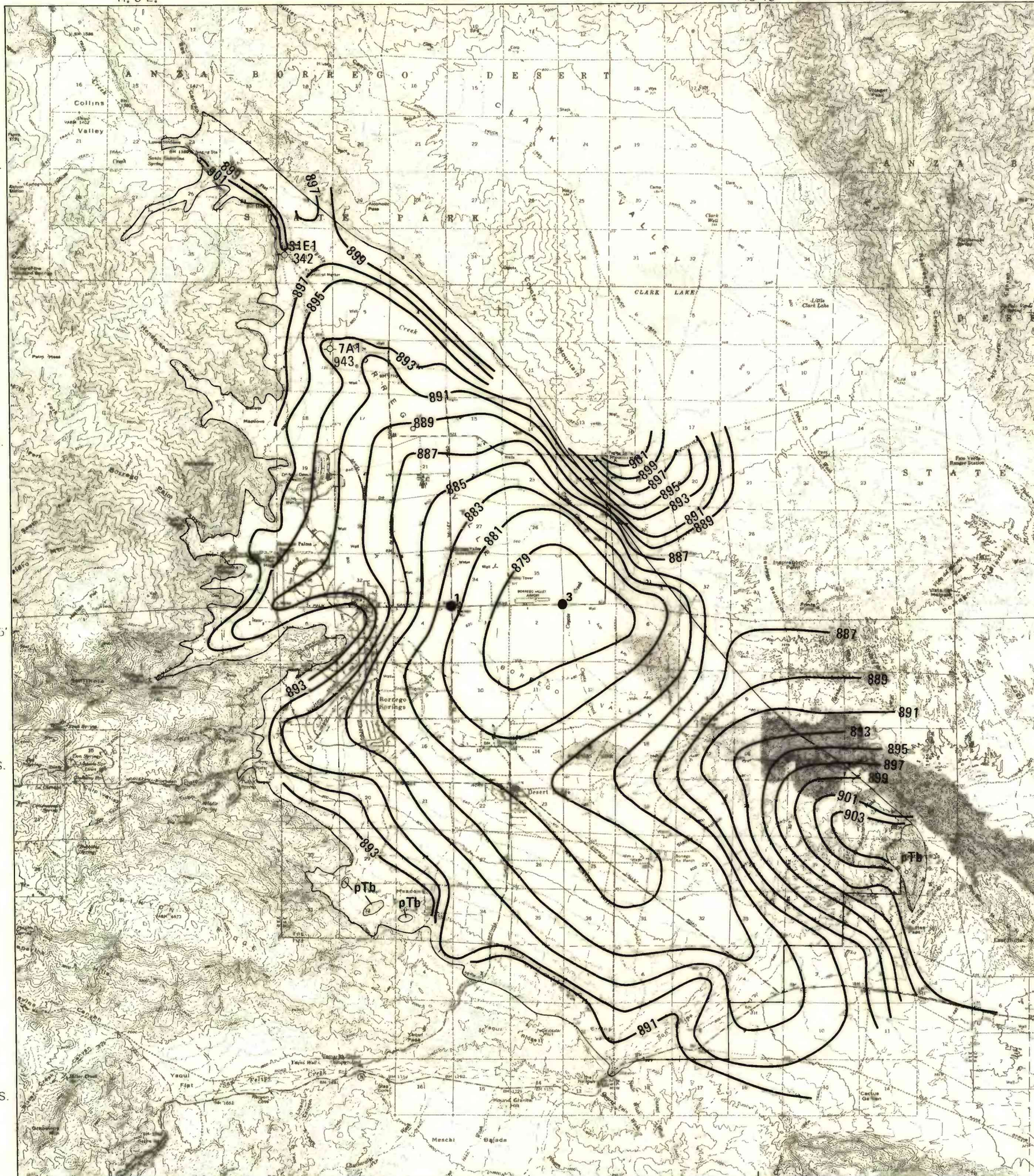
T. 9 S.

T. 10 S.

33° 15'

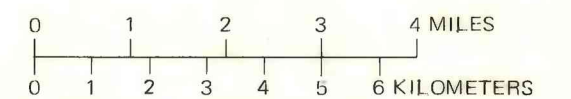
T. 11 S.

T. 12 S.



**EXPLANATION**

- pTb BASEMENT COMPLEX—Forms hills above alluvial fill in valley
- 7A1  
943 WELL—Penetrates to basement complex. Top number and letter are well number. Bottom number is depth, in feet, to basement complex
- 887— LINE OF EQUAL RESIDUAL GRAVITY—Interval, 2 milligals
- 1 GRAVITY STATION—Gravity station 1 is the base station. Gravity station 3 has the lowest value measured in Borrego Valley; a value computed equal to an estimated depth of 2,450 feet
- BASIN BOUNDARY



CONTOUR INTERVALS 40 AND 80 FEET  
 NATIONAL GEODETIC VERTICAL DATUM OF 1929

Base from U.S. Geological Survey  
 Borrego, 1959 and Clark Lake, 1960,  
 1:62,500

**RESIDUAL GRAVITY CONTOUR MAP OF BORREGO VALLEY, CALIFORNIA**