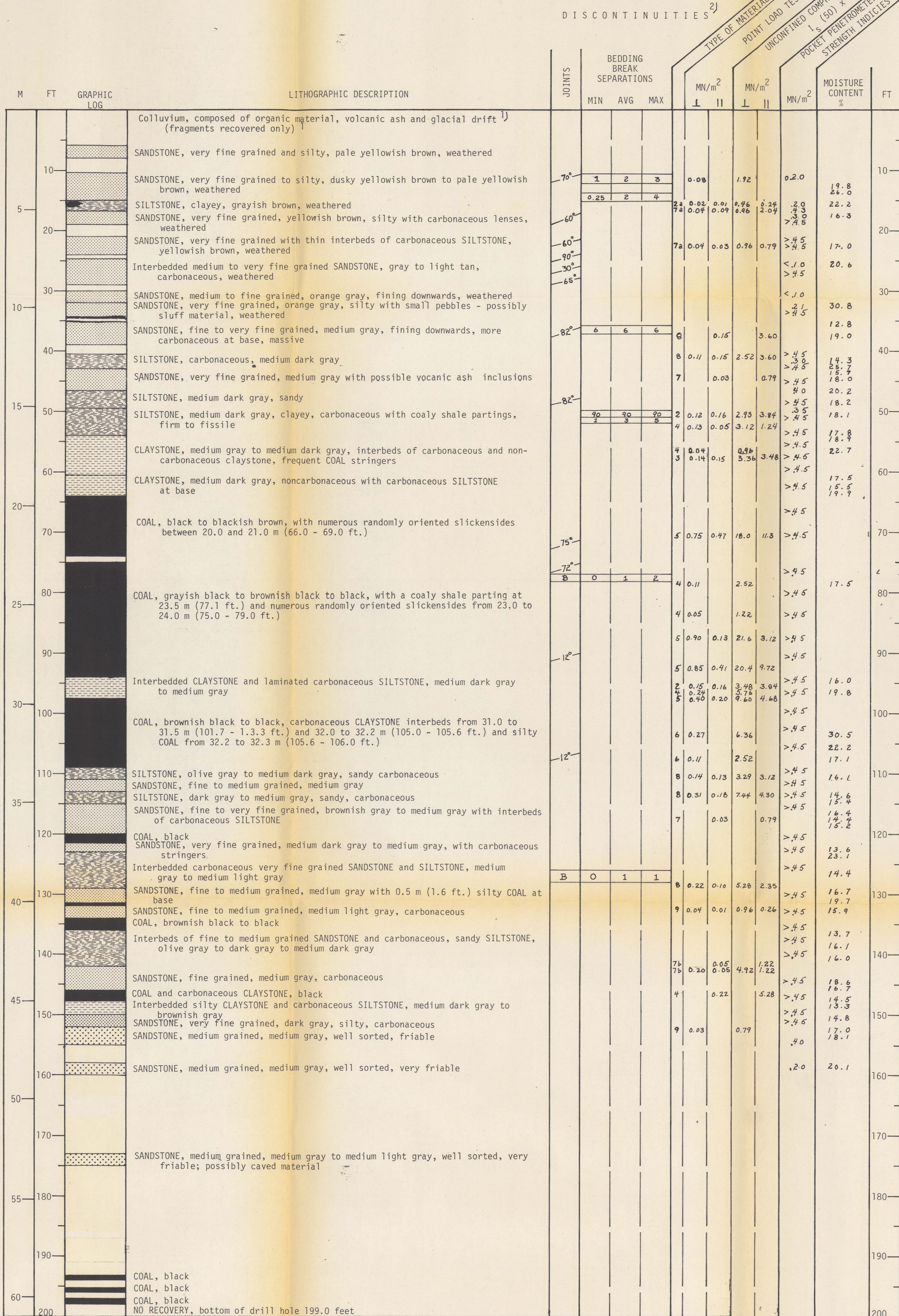
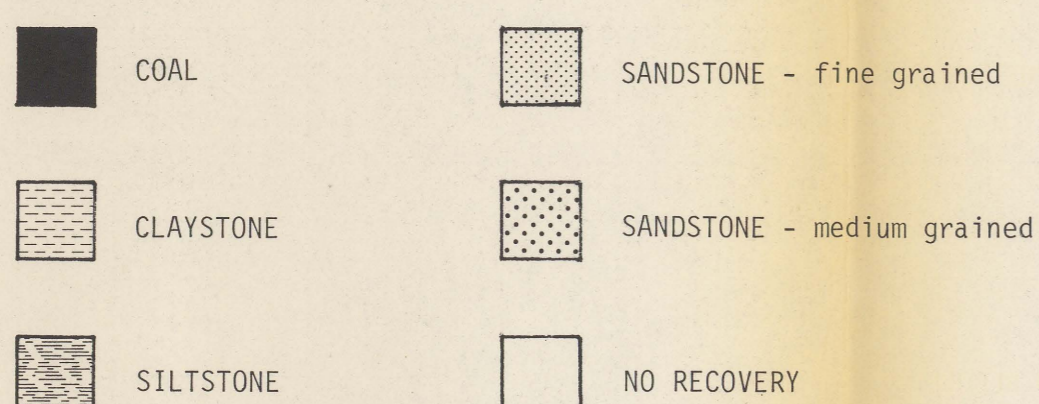
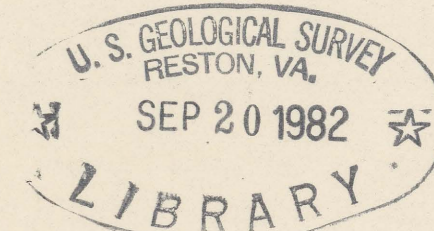


HOLE NO: 2C - 80

(200)  
R290  
no. 82-884

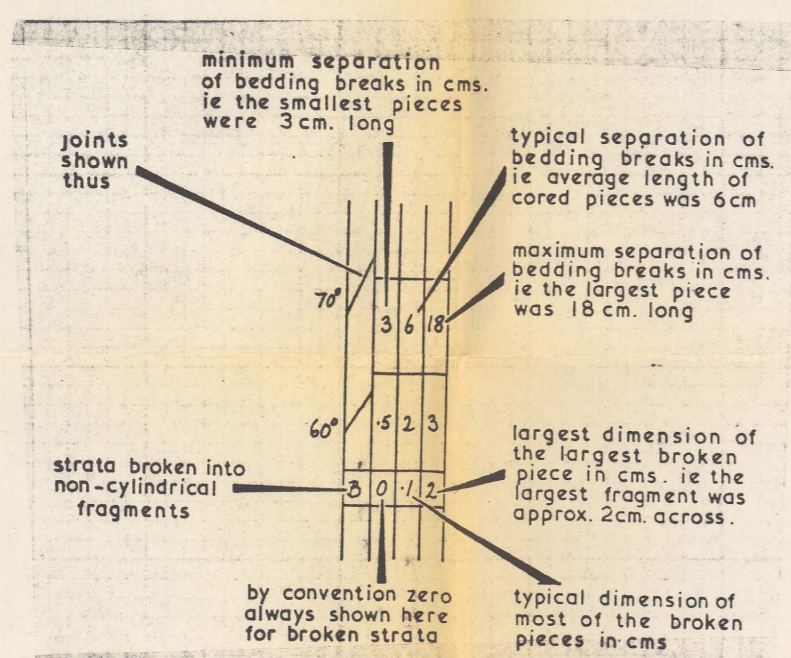
DRILL HOLE LOCATION: NE 1/4, NW 1/4 Section 26, T 14 N, R 14 W, Tyonek (B-5) Quadrangle, Alaska

COLLAR ELEVATION: 650.7 m (2,134.9 ft.)



1) Description of surficial material in the top 2 meters is based on fragments from that interval; no core recovery

2) Explanation of notation in the discontinuity columns (modified from Rankinor, 1974)



3) Type of material tested

- |                          |   |
|--------------------------|---|
| 2a - weathered Claystone | 7a - weathered fine to very fine grained Sandstone    |
| 2 - Claystone            | 7b - carbonaceous fine to very fine grained Sandstone |
| 3 - Shale                | 7 - fine to very fine grained Sandstone               |
| 4 - coaly Shale          | 8 - Siltstone   |
| 5 - Coal                 | 9 - medium grained, friable Sandstone                 |
| 6 - silty Coal           |   |

4) Calculated in meganewtons/m<sup>2</sup> (megapascals)

- ⊥ axial test
- || diametral test

I<sub>s</sub> (50) - Point load test value corrected to a reference diameter of 50 mm (Broch and Franklin, 1972)

5) Calculated in meganewtons/m<sup>2</sup> (megapascals) using the formula U = I<sub>s</sub> (50) x 24 (Franklin and others, 1972)

- ⊥ axial test
- || diametral test