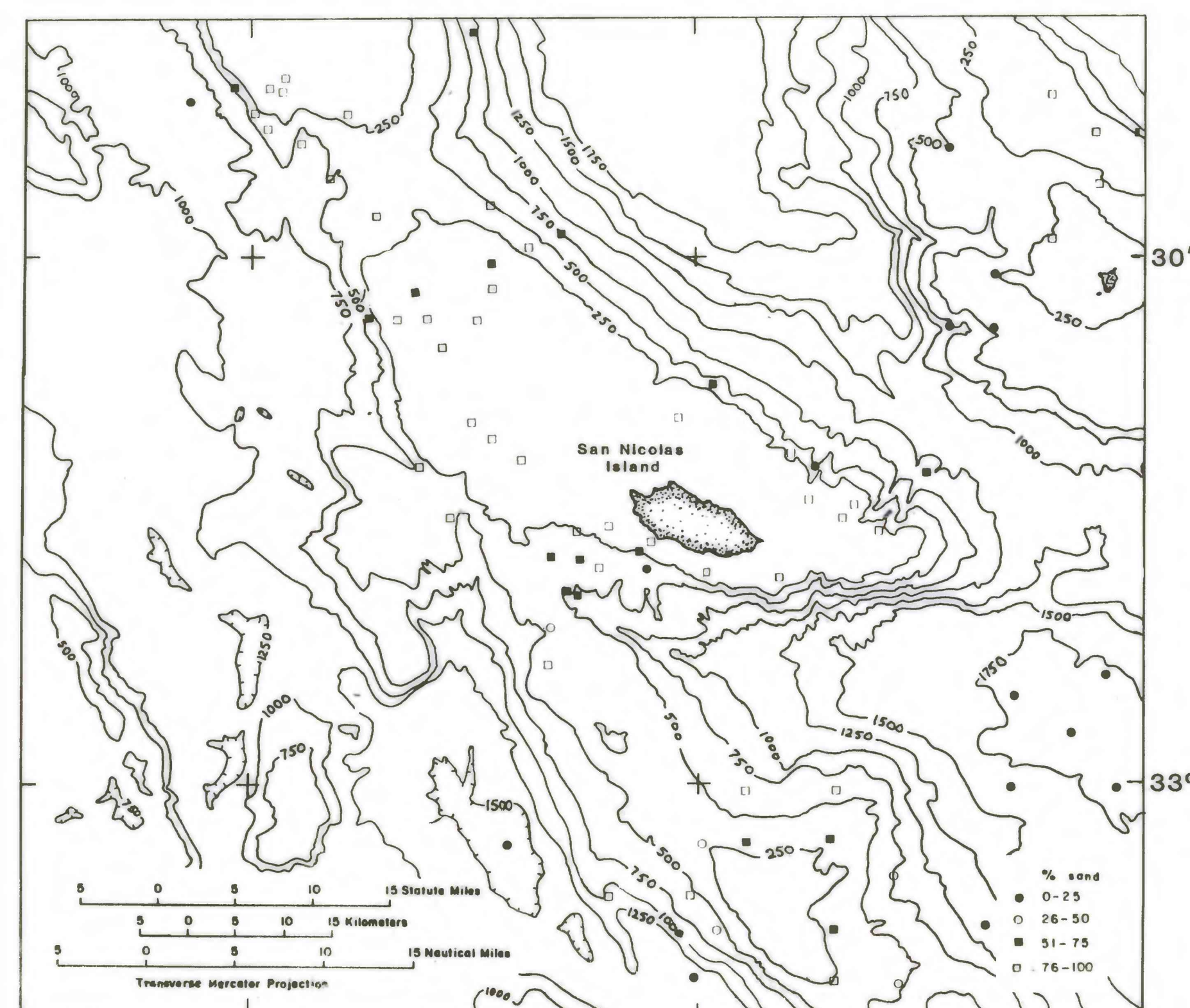
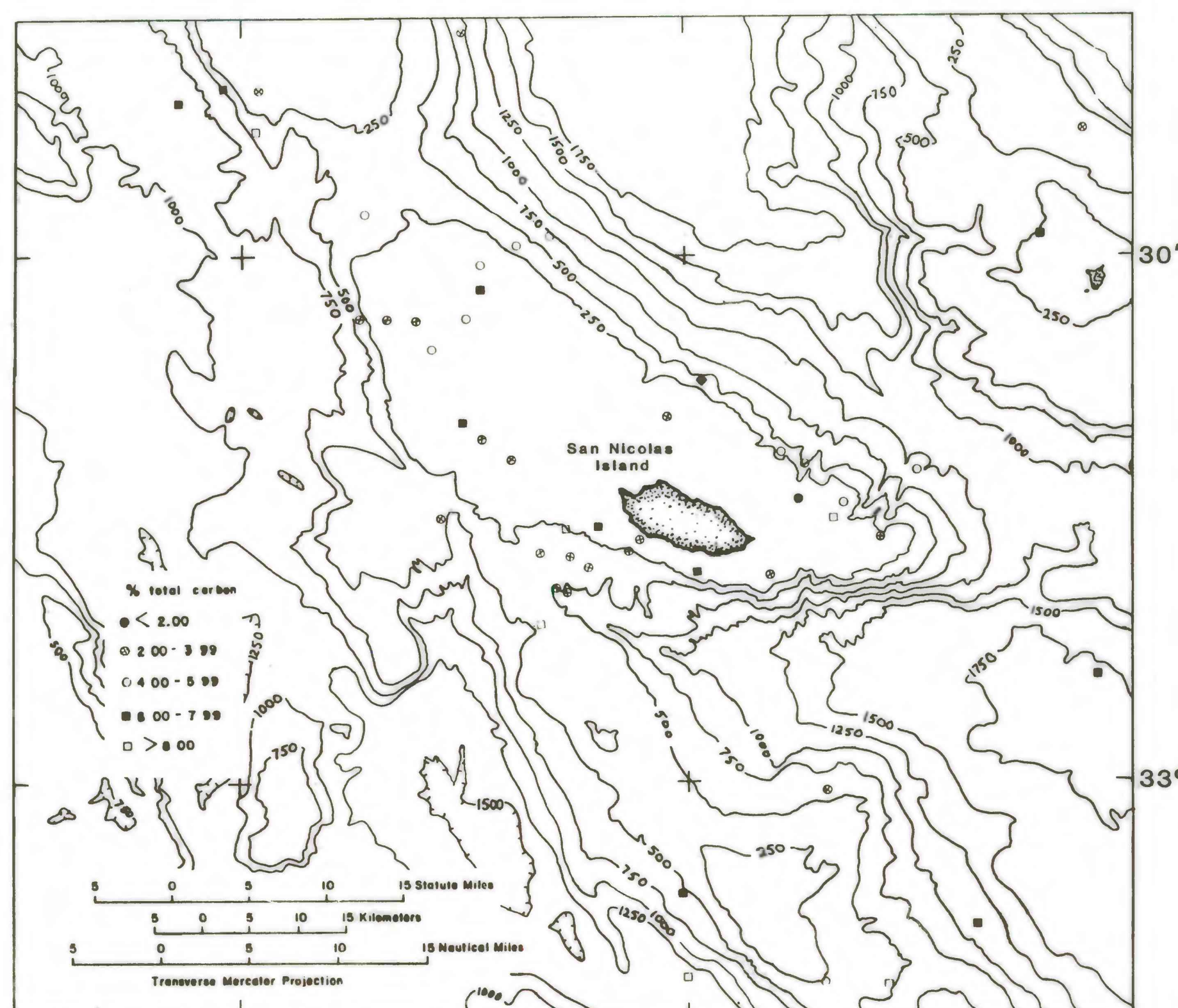


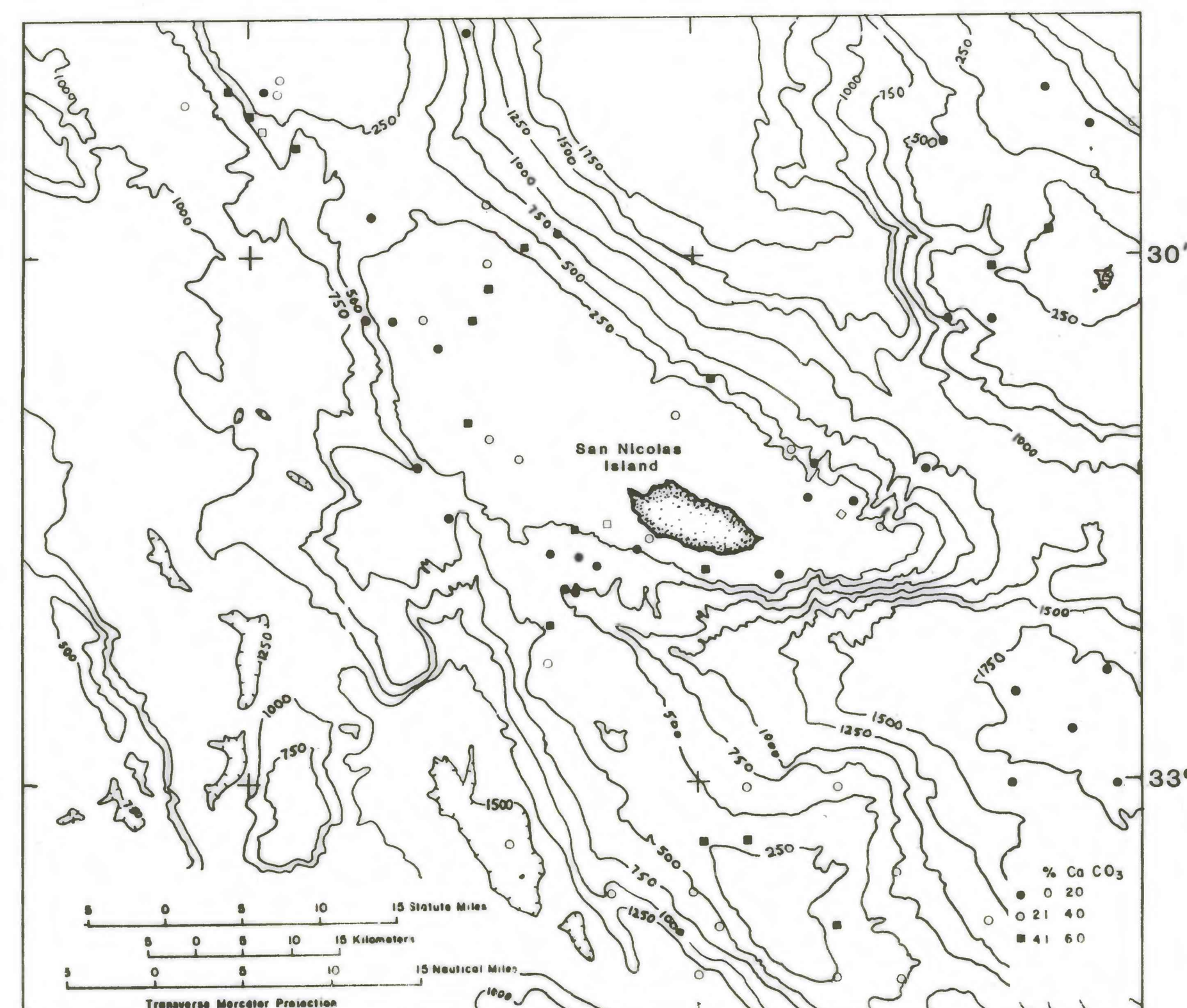
A. Mean grain size (ϕ).



B. Percent sand.



C. Percent total organic carbon.



D. Percent CaCO_3 .

This report is preliminary and has not been edited or reviewed for conformity with Geological Survey standards and nomenclature.

GRAIN SIZE, PERCENT CALCIUM CARBONATE AND ORGANIC CARBON
IN SURFACE SEDIMENTS: CENTRAL SANTA ROSA-CORTES RIDGE