

GEOPHYSICAL LOGS OF USGS DRILL-HOLE 81-2

Chuitna West Coal Field

logged by ALASKA DIVISION OF GEOLOGICAL & GEOPHYSICAL SURVEYS July 31, 1981

NATURAL
GAMMA

SPONTANEOUS
POTENTIAL

SINGLE-POINT
RESISTANCE

CORE
GEOLOGY

3-ARM
CALIPER

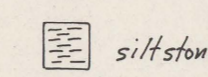
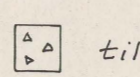
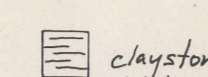
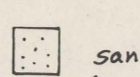

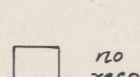
GAMMA-GAMMA
DENSITY

NEUTRON
POROSITY

HIGH-RESOLUTION
TEMPERATURE

Logging Speed: 10 ft/min up
Time Constant: 8 sec

Logging Speed: 10 ft/min up
Artesian Flow
Cased to 23.7 ft

 siltstone
 till
 sandstone (calciferous)
 sandstone (calcareous)
 coal
 no recovery

Logging Speed: 10 ft/min up
Calibrated
Drill-hole diameter

Logging Speed: 10 ft/min up
Time Constant: 2 sec
Source & Spacing: 4 mCi Co⁶⁰; 17 in.

Logging Speed: 10 ft/min up
Time Constant: 4 sec
Source & Spacing: 3 Ci Am²⁴¹Be; 17 in.

Logging Speed: 6 ft/min down
Time Constant: 1 sec
Artesian Flow: 12 hrs undisturbed

COUNTS / SECOND

MILLIVOLTS

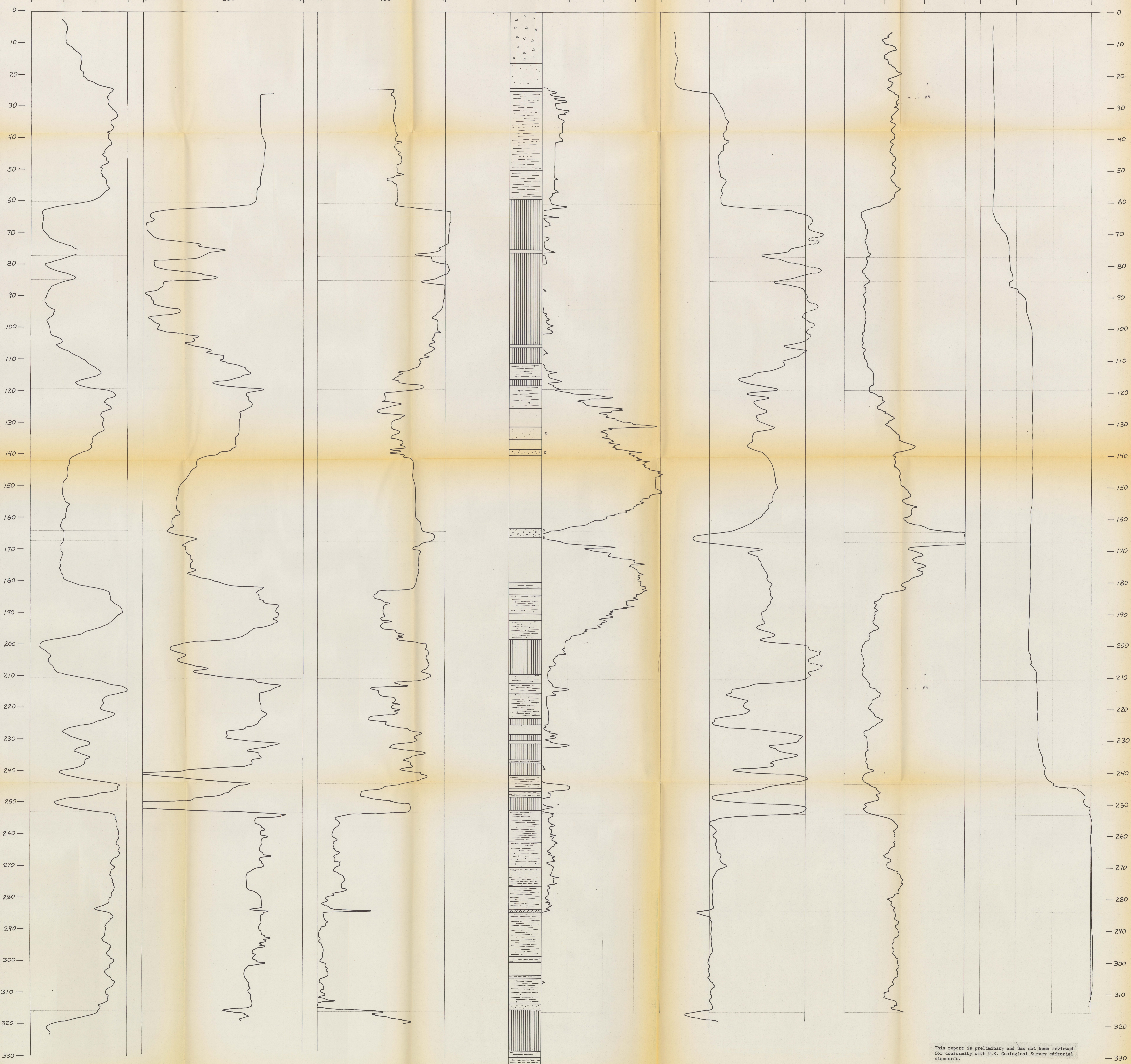
OHMS

INCHES

COUNTS / SECOND

COUNTS / SECOND

DEGREES CELSIUS



COMPOSITE OF REFINED GEOPHYSICAL AND LITHOLOGIC LOGS FROM DRILL HOLE CW-81-2

This report is preliminary and has not been reviewed for conformity with U.S. Geological Survey editorial standards.