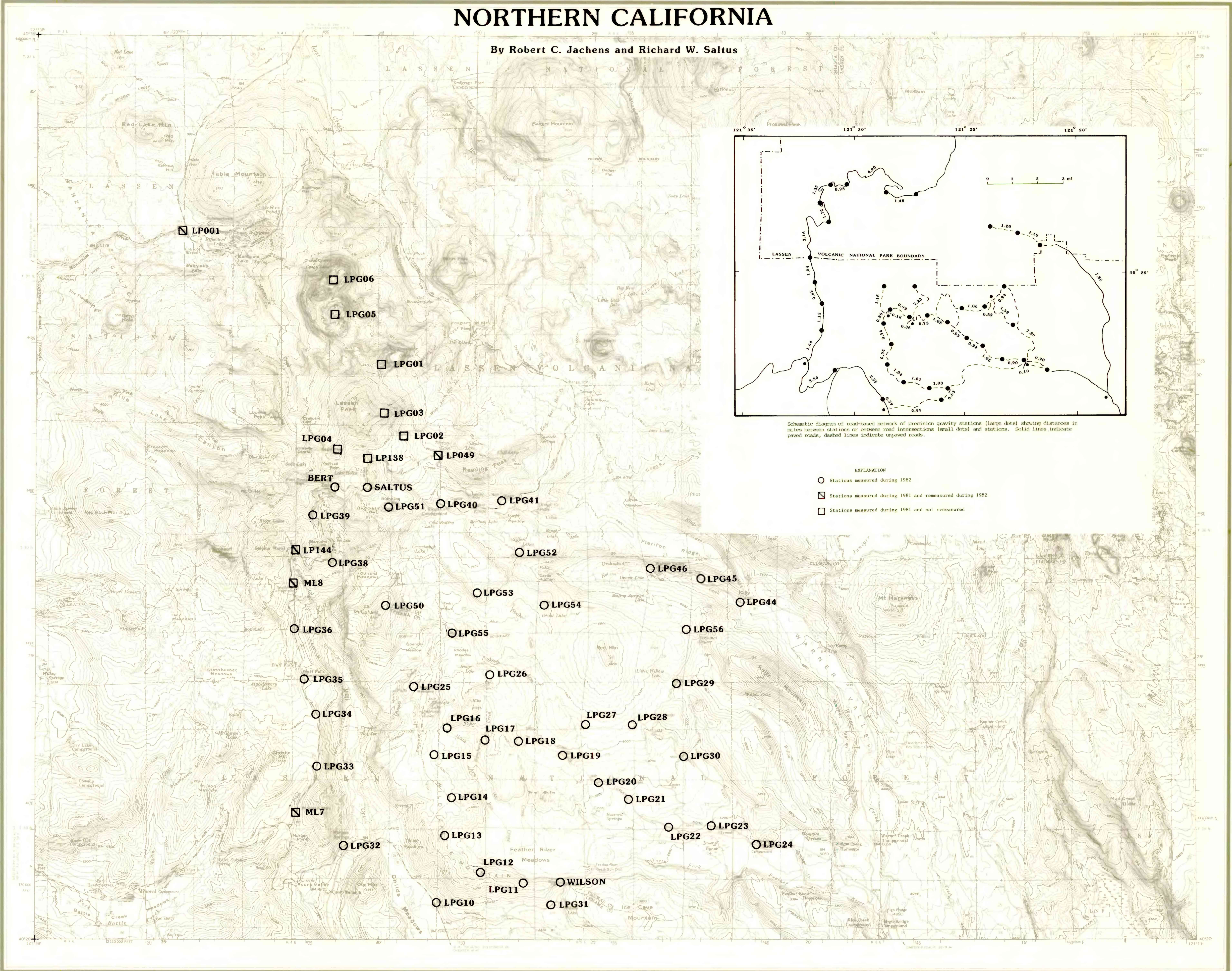


PRECISION GRAVITY NETWORK LASSEN VOLCANIC NATIONAL PARK AND VICINITY, NORTHERN CALIFORNIA

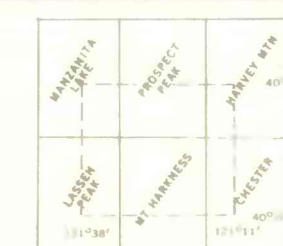
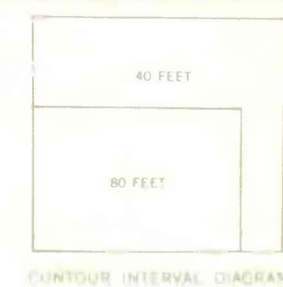
By Robert C. Jachens and Richard W. Saltus



Schematic diagram of road-based network of precision gravity stations (large dots) showing distances in miles between stations or between road intersections (small dots) and stations. Solid lines indicate paved roads, dashed lines indicate unpaved roads.

- EXPLANATION
- Stations measured during 1982
 - ◻ Stations measured during 1981 and re-measured during 1982
 - ◻ Stations measured during 1981 and not re-measured

Base from U. S. Geological Survey
topo series 1:62,500 Lassen
Volcanic National Park and Vicinity
1957



ROAD CLASSIFICATION
Main road Light rib
Unimproved dirt
State Route

This report is preliminary and has not been reviewed for conformity with U.S. Geological Survey editorial standards.