

SB1-68-25CCC1

Company USGS GWR	
Bore Hole BN 77-16B	
Area/Project BOULDER-WELD COAL FIELD	
County WELD	State COLORADO
Date JAN. 6, 1978	Unit No. 109
Location BROOMFIELD	Operator W. LINTON
T.D. Drilled 838 ft.	T.D. Logged 836 ft.
Bit Size 8 3/4"	
Logging Speed 25 ft/min	

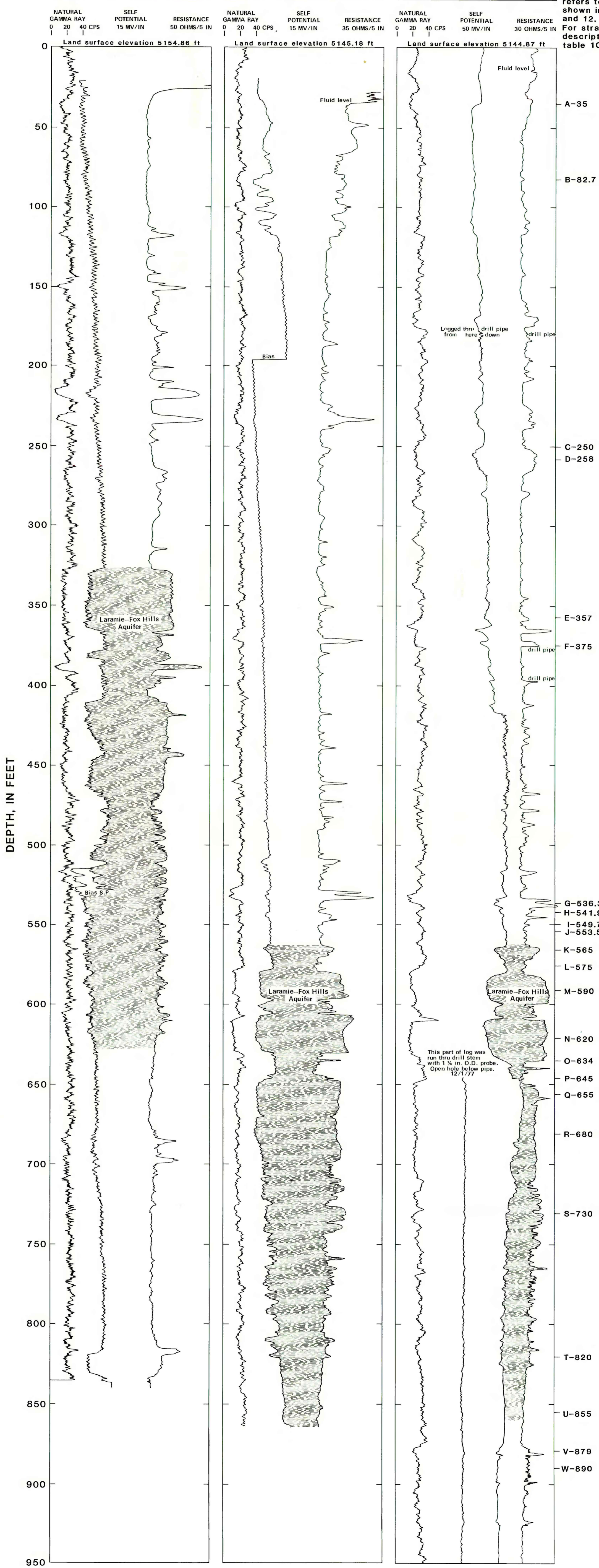
SB1-68-36BBA3

Company USGS GWR	
Bore Hole BN 77 15-B	
Area/Project BOULDER-WELD COAL FIELD	
County WELD	State COLORADO
Date DEC. 14, 1977	Unit No. 109
Location BROOMFIELD	Operator W. LINTON
T.D. Drilled 866 ft.	T.D. Logged 865 ft.
Bit Size 8 3/4"	
Logging Speed 25 ft/min	

SB1-68-36BBA 1

Company USGS GWR	
Bore Hole BN 77-17B (BN-P1)	
Area/Project BOULDER-WELD COAL FIELD	
County WELD	State COLORADO
Date NOV. 21, 1977	Unit No. 109
Location BROOMFIELD	Operator F.L. WEEDON
T.D. Drilled 1488 ft.	T.D. Logged 1485 ft.
Bit Size 3"	
Logging Speed 25 ft/min	

Core sample number refers to the sample shown in tables 11 and 12. For stratigraphic description see table 10.



GEOPHYSICAL LOGS FROM THREE TEST SITES IN WELD COUNTY, COLORADO.