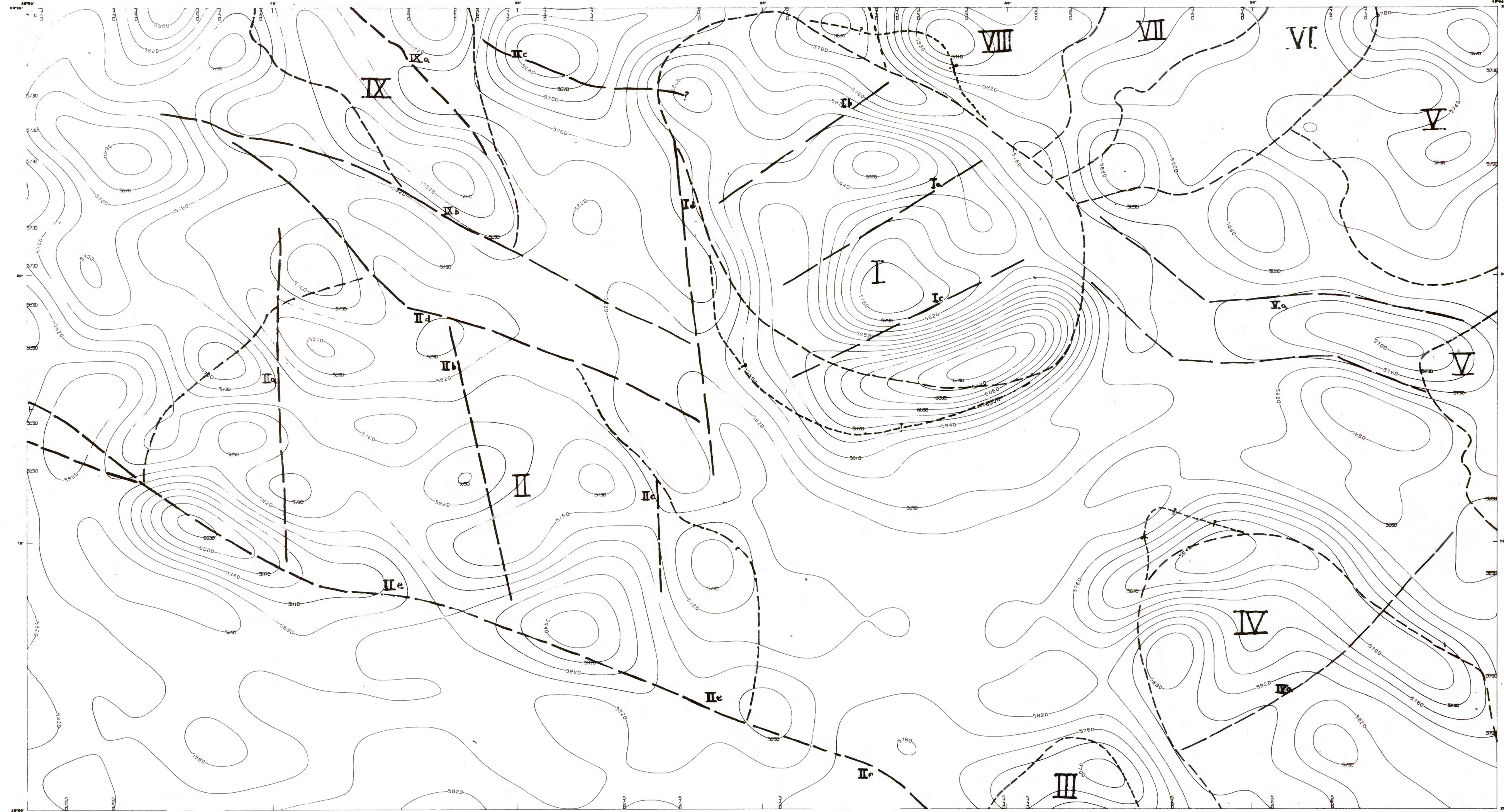


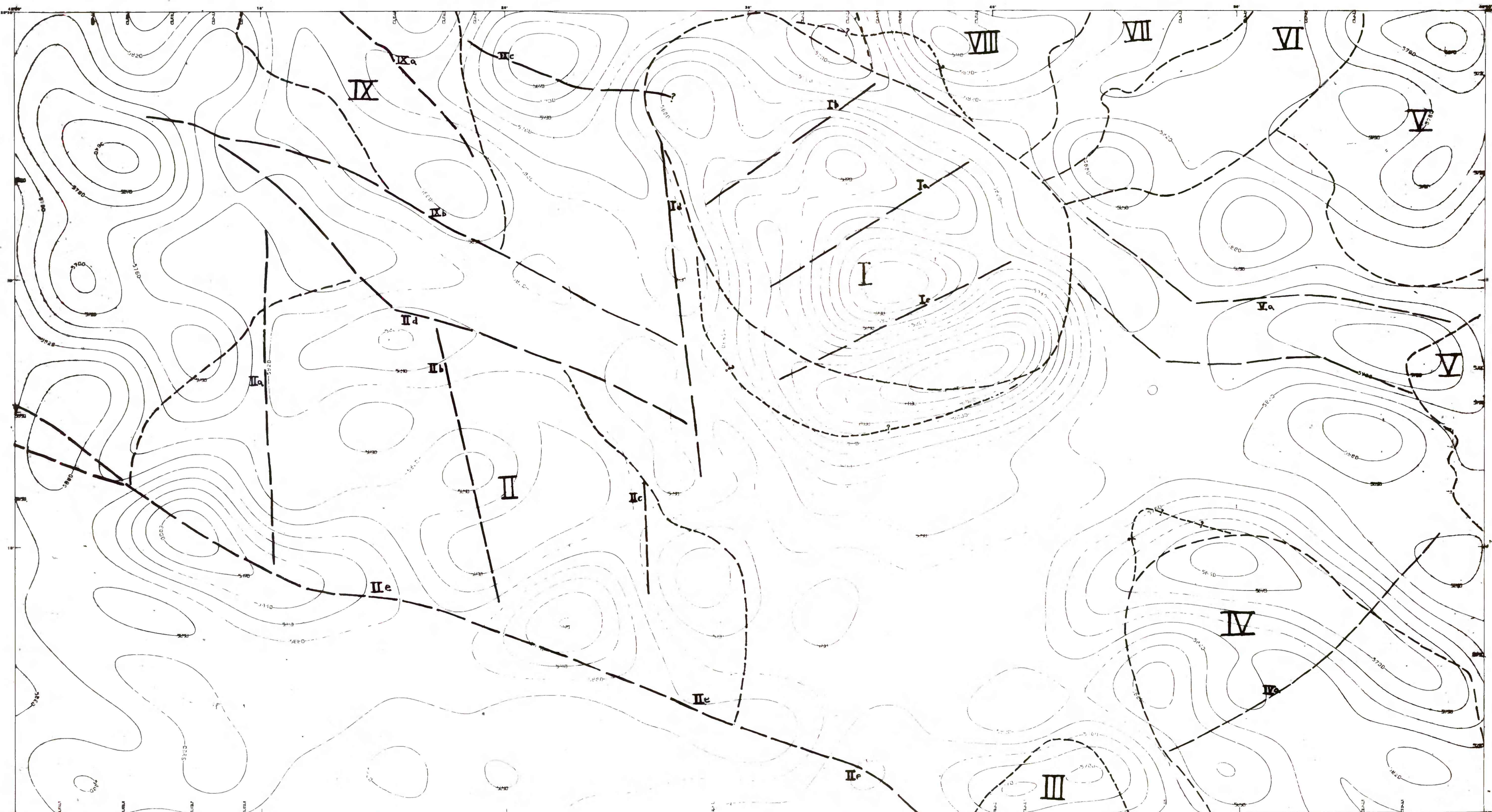
ROTATION-TO-POLE MAGNETIC MAP OF THE WADI AL JARIR AND AL JURDHAWIYAH QUADRANGLES, SHEETS 25/42 C AND D,
KINGDOM OF SAUDI ARABIA
compiled by
M. Dean Kleinkopf
1983

EXPLANATION
 (I) Outline of boundary of magnetic province inferred to reflect a geosyncline (or geosynclinal) rock mass. Province number refers to map.
 (II) Magnetic lineation inferred to reflect a fault or fracture zone. Lineation number refers to map.
 Contour interval, 50 nanotesla (nT). Rotation-to-pole process used (inclination = 37°, declination = 0°).



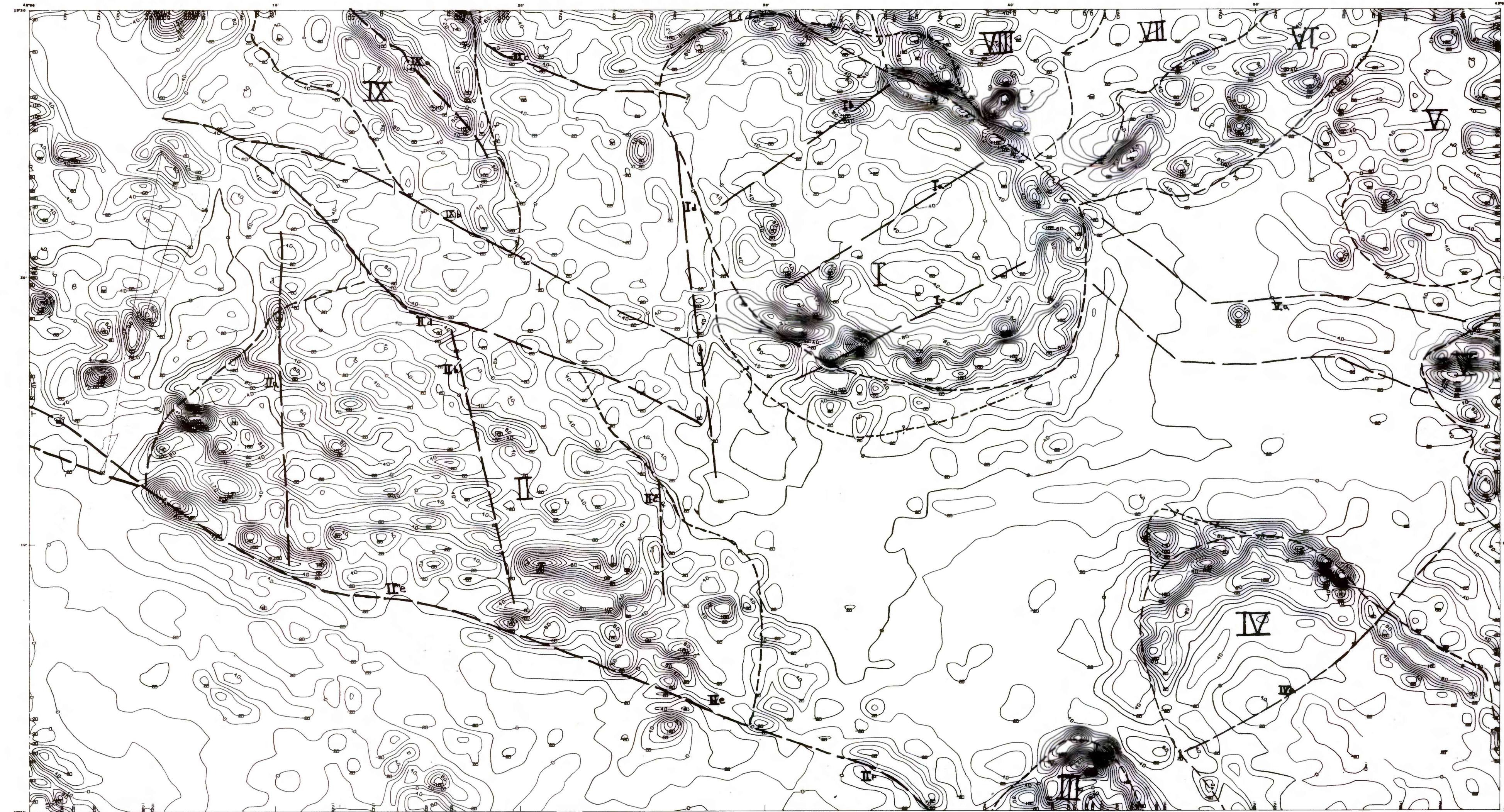
BAND-PASS FILTER MAGNETIC MAP OF THE WADI AL JARIR AND AL JURDHAWIYAH QUADRANGLES, SHEETS 25/42 C AND D,
KINGDOM OF SAUDI ARABIA
compiled by
M. Dean Kleinkopf
1983

EXPLANATION
 (I) Outline of boundary of magnetic province inferred to reflect a geosyncline (or geosynclinal) rock mass. Province number refers to map.
 (II) Magnetic lineation inferred to reflect a fault or fracture zone. Lineation number refers to map.
 Contour interval, 50 nanotesla (nT). Band-pass filter (low cut, 0.05 cycles per arc second; high cut, 0.15 cycles per arc second).



LOW-PASS FILTER MAGNETIC MAP OF THE WADI AL JARIR AND AL JURDHAWIYAH QUADRANGLES, SHEETS 25/42 C AND D,
KINGDOM OF SAUDI ARABIA
compiled by
M. Dean Kleinkopf
1983

EXPLANATION
 (I) Outline of boundary of magnetic province inferred to reflect a geosyncline (or geosynclinal) rock mass. Province number refers to map.
 (II) Magnetic lineation inferred to reflect a fault or fracture zone. Lineation number refers to map.
 Contour interval, 50 nanotesla (nT). Low-pass filter (cutoff wavelength, 8 km).



RESIDUAL-FIELD MAGNETIC MAP OF THE WADI AL JARIR AND AL JURDHAWIYAH QUADRANGLES, SHEETS 25/42 C AND D,
KINGDOM OF SAUDI ARABIA
compiled by
M. Dean Kleinkopf
1983

EXPLANATION
 (I) Outline of boundary of magnetic province inferred to reflect a geosyncline (or geosynclinal) rock mass. Province number refers to map.
 (II) Magnetic lineation inferred to reflect a fault or fracture zone. Lineation number refers to map.
 Contour interval, 50 nanotesla (nT). Residual field derived from low-pass filter map (Plate 3c) using low-pass filter data (Plate 3c).

This report is preliminary and has not been reviewed for conformity with U.S. Geological Survey editorial standards and stratigraphic nomenclature.

SACIR-498