

U.S. GEOLOGICAL SURVEY
CORE HOLE EOS-2

LOCATION
NW¼NW¼SE¼ sec. 26, T. 34 N., R. 55 E., Mount Diablo Meridian, Elko County, Nevada; from southeast section corner, located approximately 2500 ft north and 2450 ft west.

APPROXIMATE ELEVATION = 5600 ft

TOTAL DEPTH = 180.1 ft

HOLE DIAMETER (Drilled) = 3.0 in. CORE SIZE: NQ (1.875-inch diameter)

DRILLED BY: Toly Exploration and Drilling, Salt Lake City, Utah

DRILLING MEDIUM: Air mist and a small amount of bentonite gel

DEPTH TO CORE POINT = 20.0 ft

DATE STARTED: 10/5/81

DATE COMPLETED: 10/13/81

WELL-SITE GEOLOGISTS: S. W. Moore and C. T. Server, Jr.

WIRE-LINE WELL LOGS

Logger: White Dog Exploration Co., Salt Lake City, Utah

Date Logged: 11/23/81

Logged Depth: 178 ft

Type of Log	Abbreviation	Logging Speed (feet/minute)	Time Constant
Gamma Ray	GR	15	2
Gamma-Gamma Density	GGD	10	1
Resistance	R	15	---
Caliper	CAL	15	---

Remarks: Original scale of logging was at 1 inch = 5 ft. The resistance log is an uncalibrated log; relative resistance increases to the right. Density increases to the right.

HOLE CONDITIONS

Depth of casing = 19.3 ft

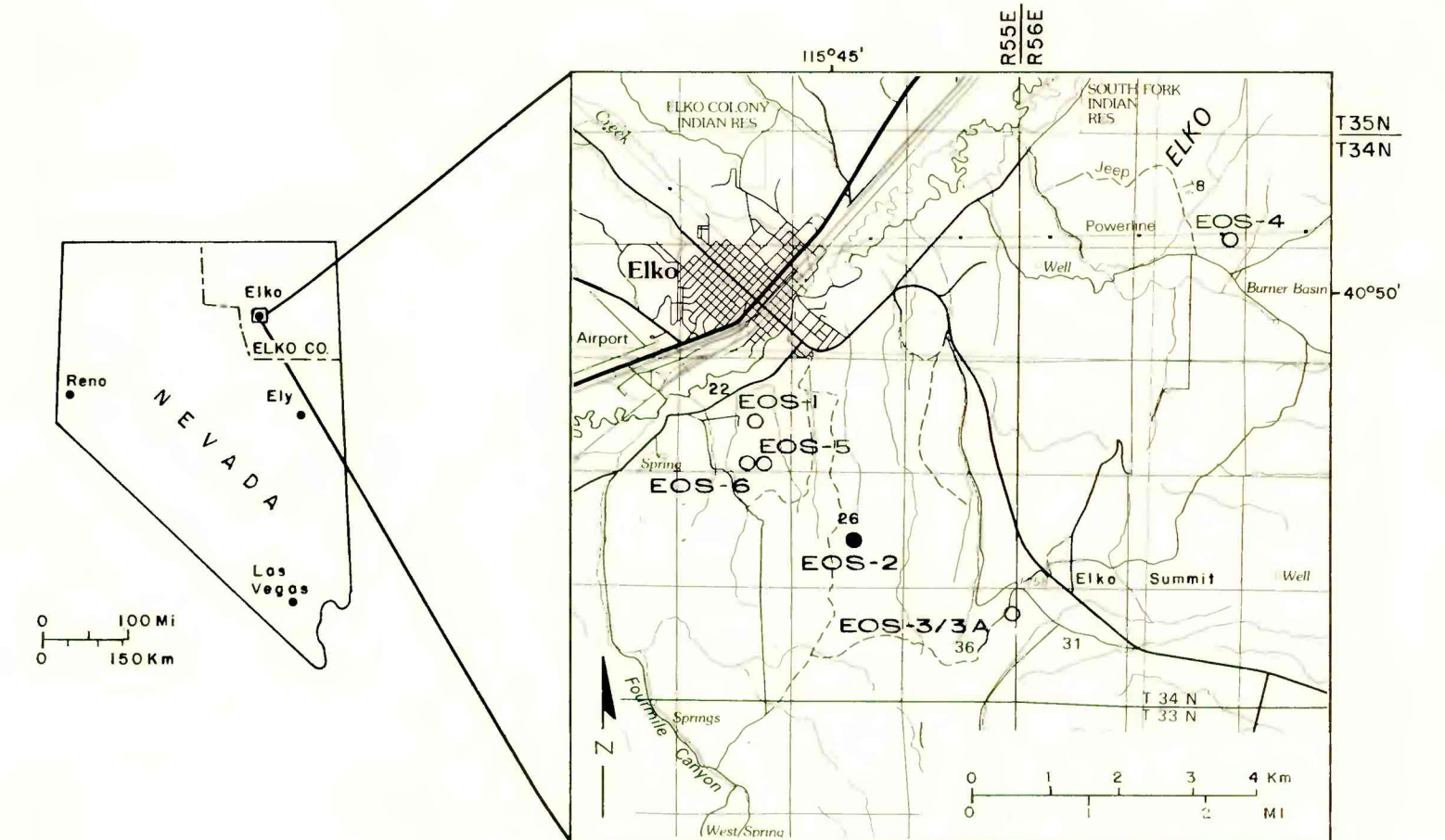
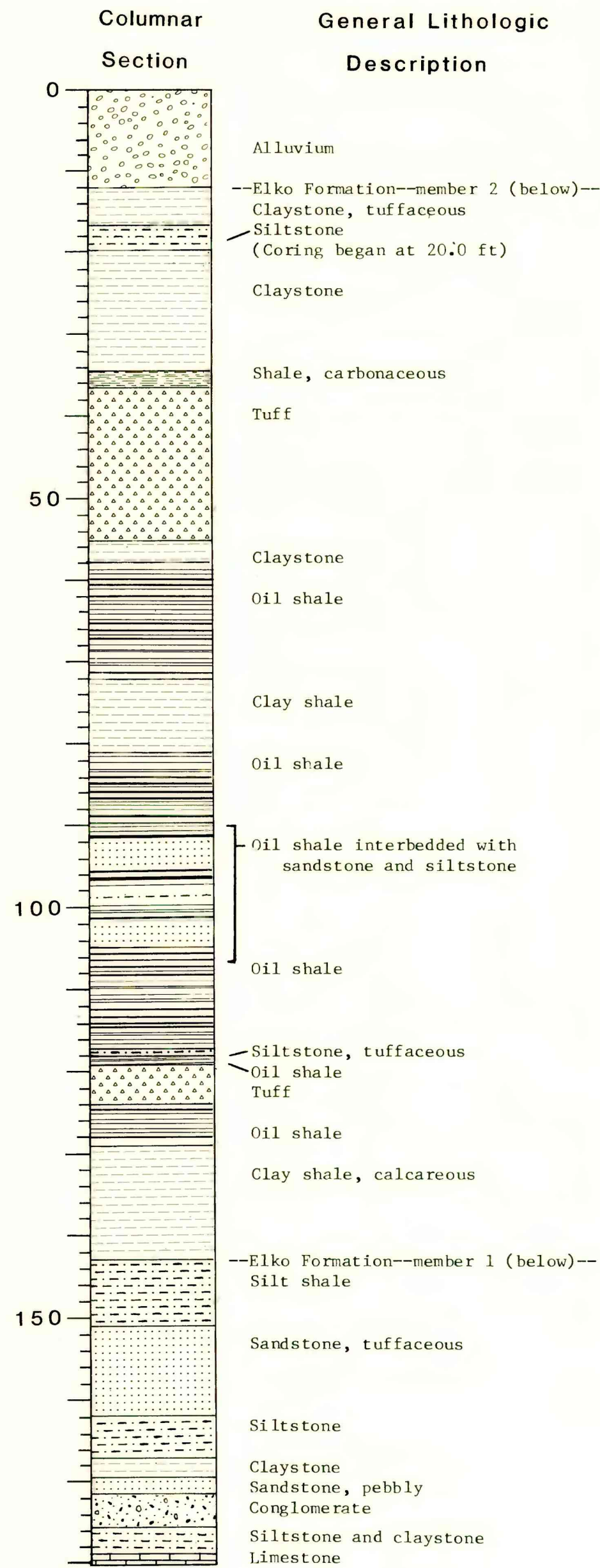
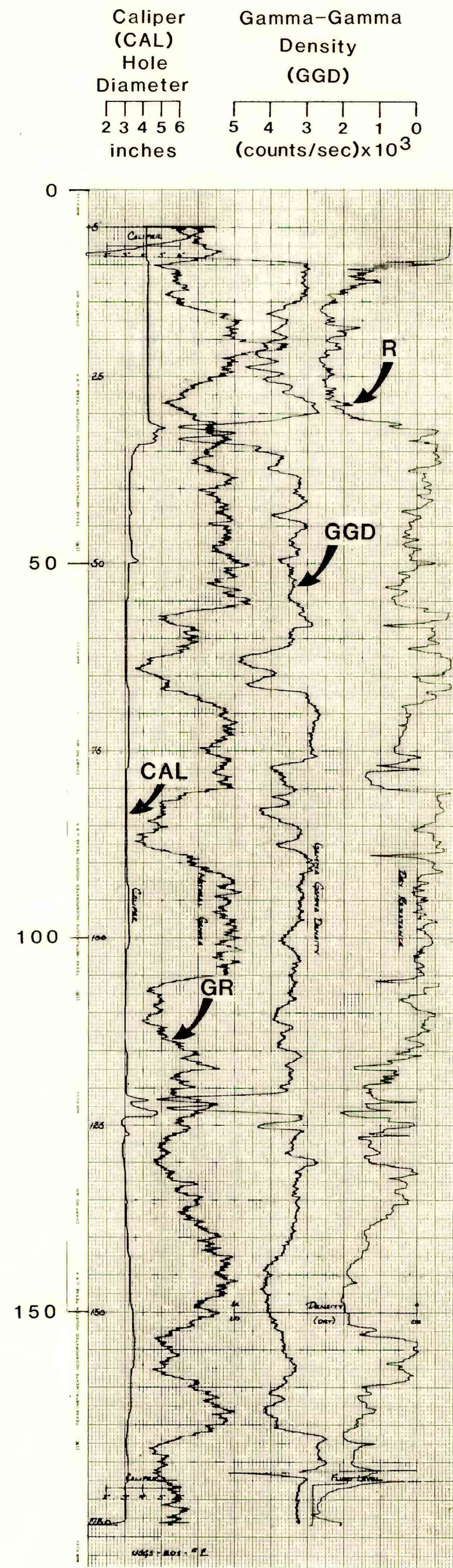
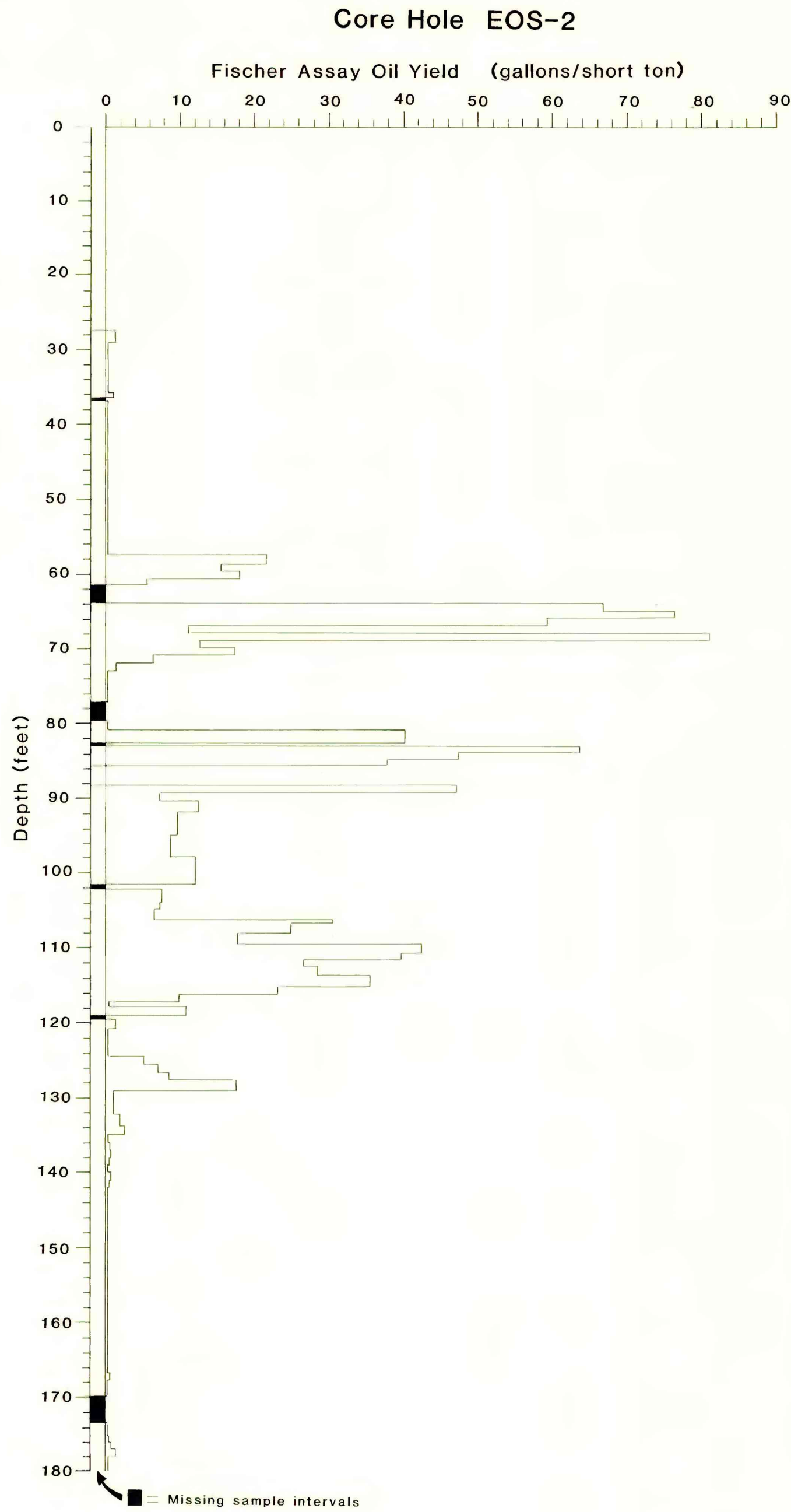
Empty hole 0-171 ft; fluid (water) level at 171 ft

LITHOLOGIC UNITS PENETRATED

Quaternary alluvium; Eocene and Oligocene(?) Elko Formation--member 2 (oil shale member) and member 1 (claystone and conglomerate member). Average dip of bedding = 20°.

FISCHER ASSAYS BY

L. G. Trudell, Laramie Energy Technology Center, Laramie, Wyoming, using the modified Fischer retort method.



This report has not been edited for conformity with U. S. Geological Survey editorial standards or stratigraphic nomenclature.

FISCHER ASSAY OIL-YIELD HISTOGRAM, WIRE-LINE WELL LOGS, AND GENERALIZED LITHOLOGIC LOG FROM CORE HOLE EOS-2,
ELKO COUNTY, NEVADA

By
S.W. Moore
1983