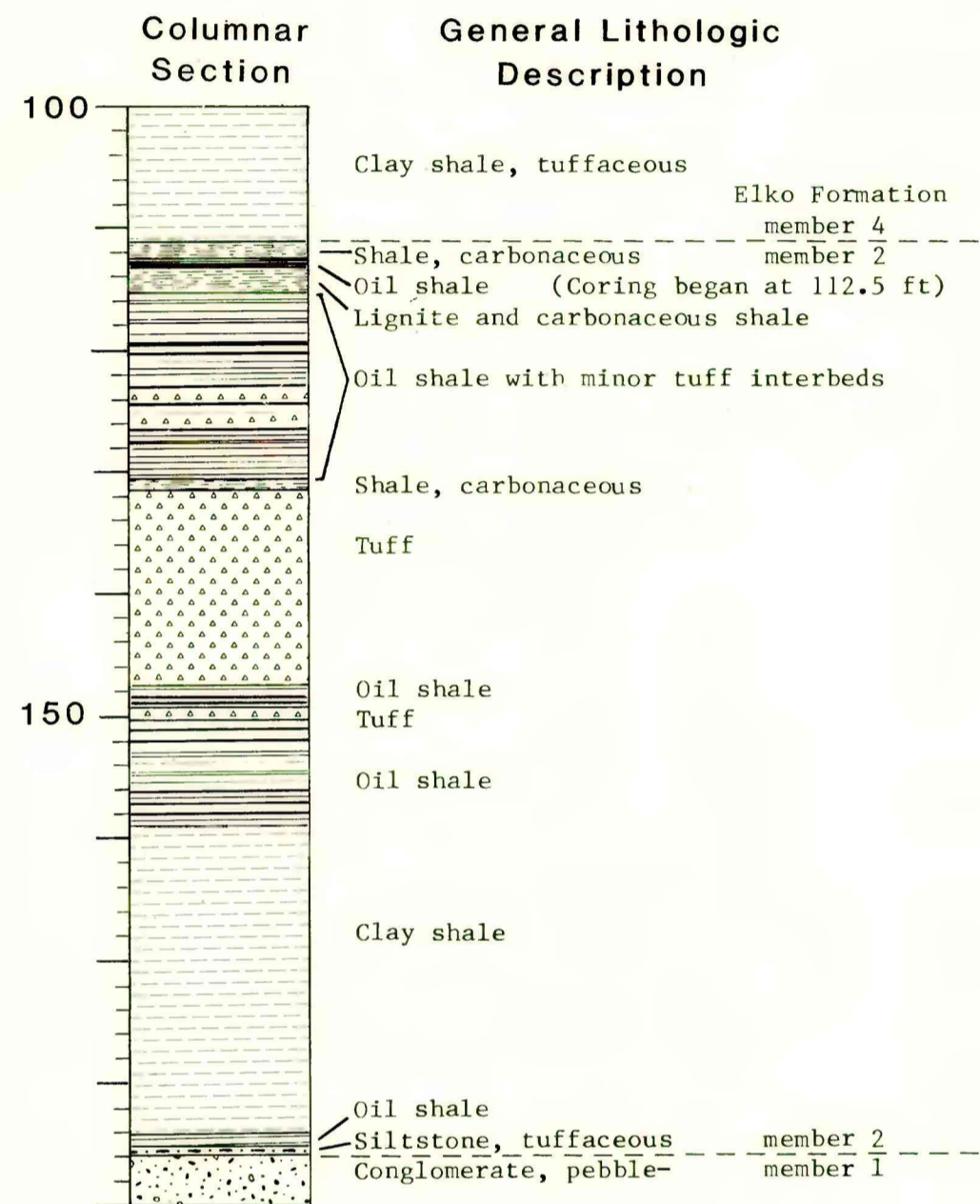
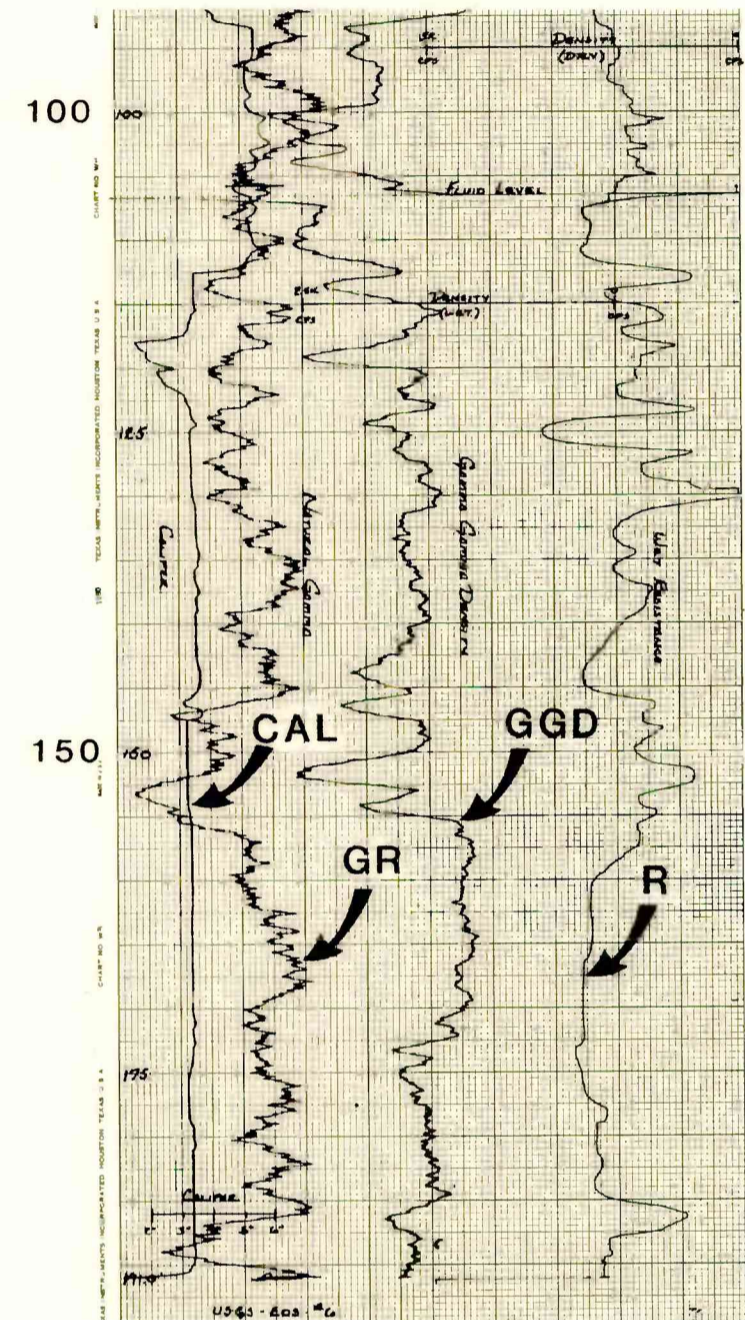
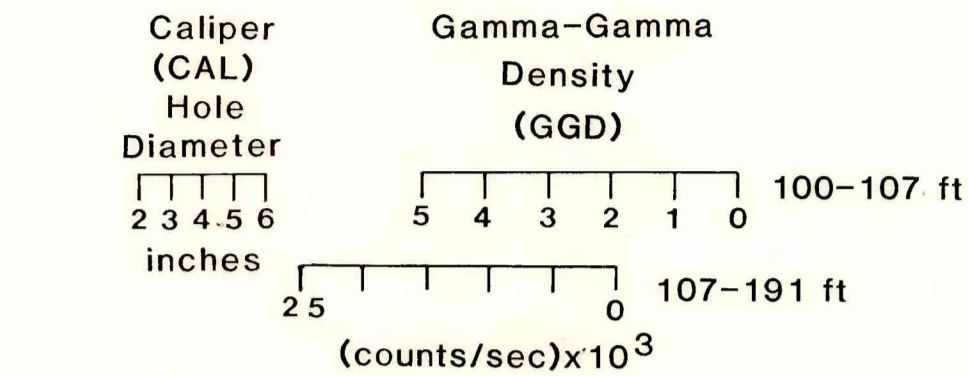
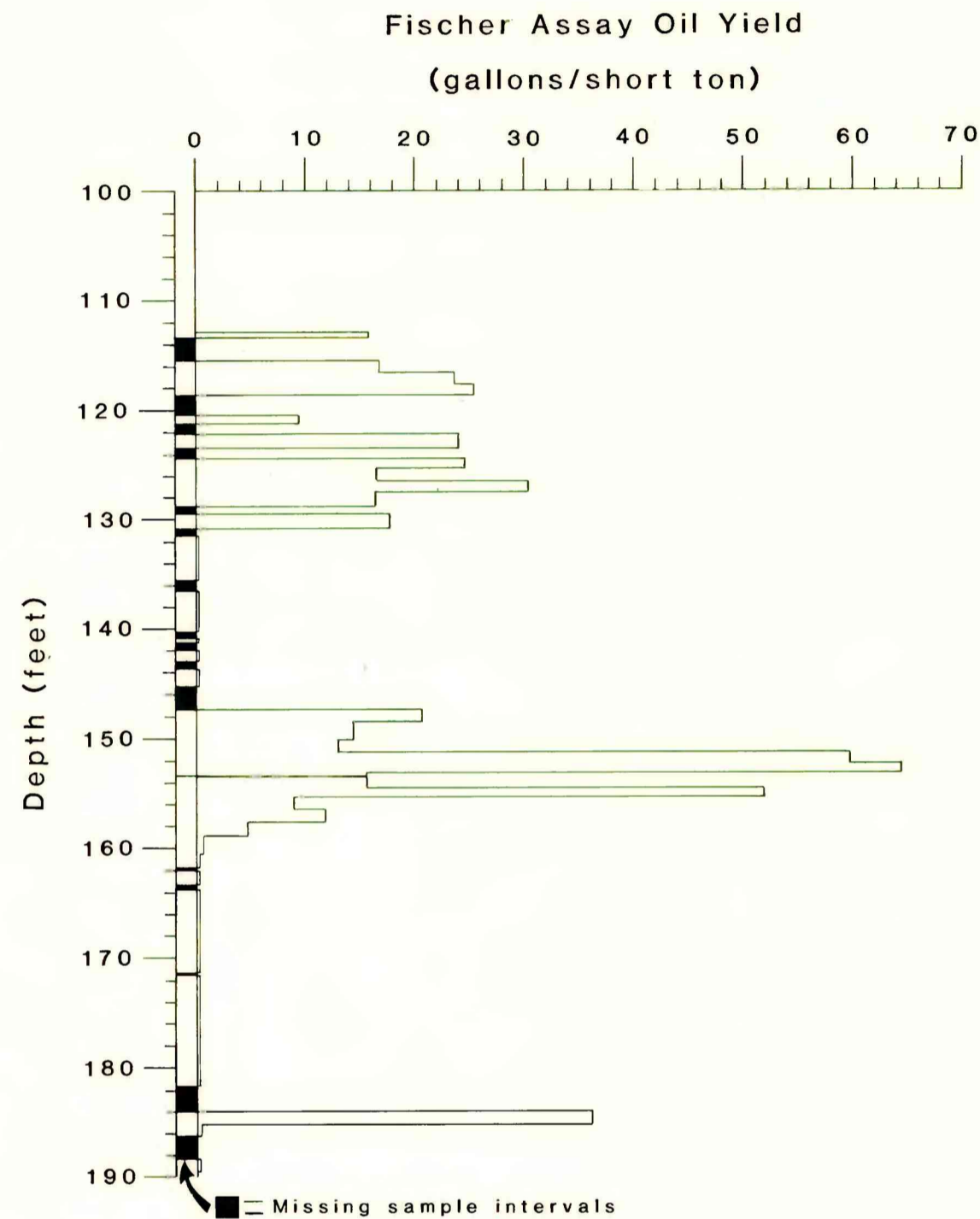


Core Hole EOS-6



U.S. GEOLOGICAL SURVEY
CORE HOLE EOS-6

LOCATION
NE $\frac{1}{4}$ SW $\frac{1}{4}$ SE $\frac{1}{4}$ sec. 22, T. 34 N., R. 55 E., Mount Diablo Meridian, Elko County, Nevada; from southeast section corner, located approximately 800 ft north and 1850 ft west.

APPROXIMATE ELEVATION = 5260 ft

TOTAL DEPTH = 192.0 ft

HOLE DIAMETER (Drilled) = 3.0 in. CORE SIZE: NQ (1.875-inch diameter)

DRILLED BY: Toly Exploration and Drilling, Salt Lake City, Utah

DRILLING MEDIUM: Air mist and bentonite gel

DEPTH TO CORE POINT = 112.5 ft

DATE STARTED: 11/21/81 DATE COMPLETED: 11/24/81

WELL-SITE GEOLOGISTS: S. W. Moore and R. D. Dockter

WIRE-LINE WELL LOGS

Logger: White Dog Exploration Co., Salt Lake City, Utah

Date Logged: 11/24/81

Logged Depth: 191.0 ft

Type of Log	Abbreviation	Logging Speed (feet/minute)	Time Constant
Gamma Ray	GR	15	2
Gamma-Gamma Density	GGD	10	1
Resistance	R	15	---
Caliper	CAL	15	---

Remarks: Original scale of logging was at 1" = 5 ft. The resistance log is an uncalibrated log; relative resistance increases to the right. The horizontal scale of the gamma-gamma density log scale changes at a depth of 107 ft (water level). Density increases to the right.

HOLE CONDITIONS

Depth of casing = 18.0 ft

Empty hole 0-107.0 ft; fluid (water) level at 107.0 ft

Bad hole conditions (variable hole diameter--see caliper log)

LITHOLOGIC UNITS PENETRATED

Eocene and Oligocene(?) Elko Formation--member 4 (siltstone and oil shale member) and member 2 (oil shale member). Average dip of bedding = 10°.

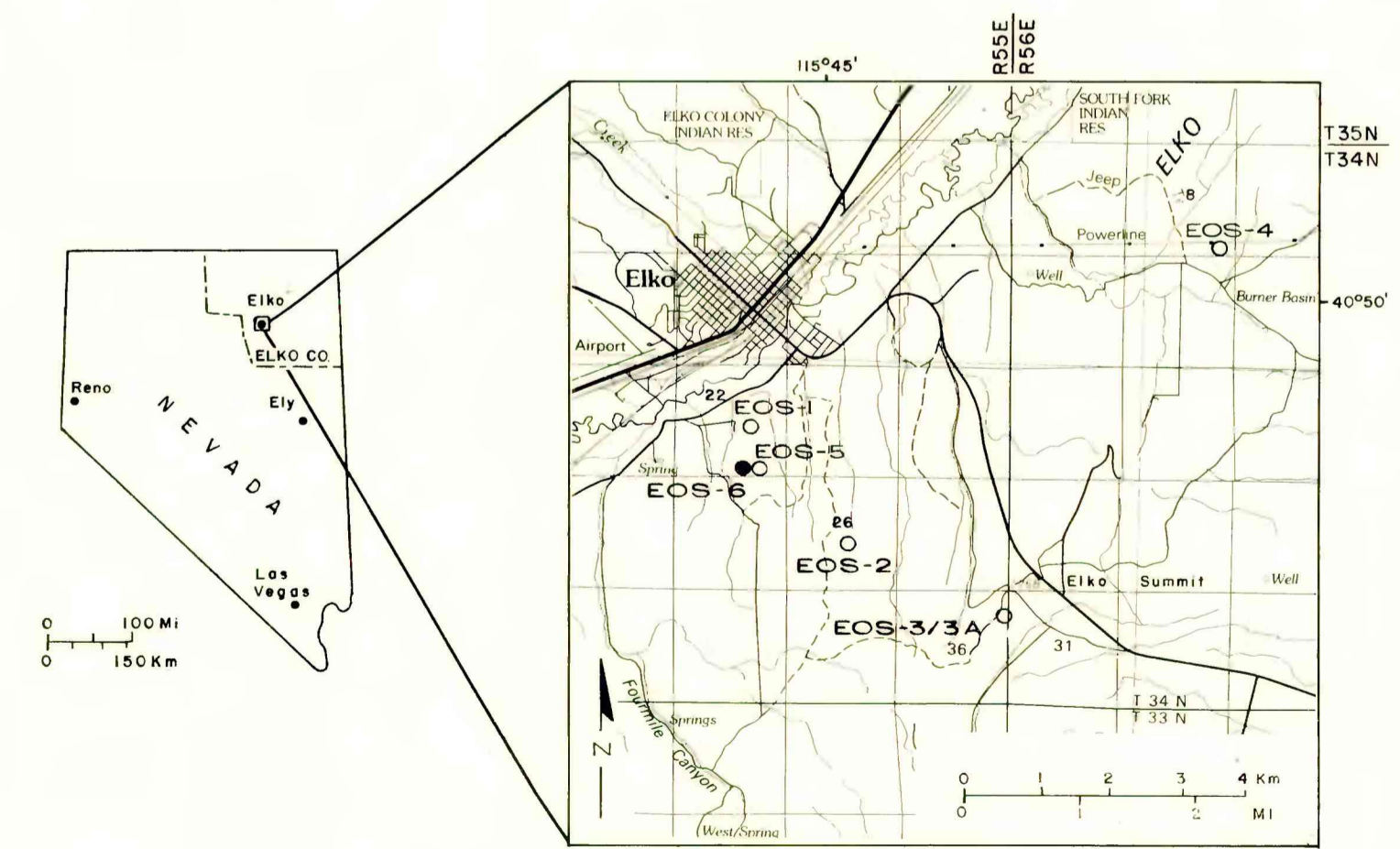
FISCHER ASSAYS BY

L. G. Trudell, Laramie Energy Technology Center, Laramie, Wyoming, using the modified Fischer retort method.

FISCHER ASSAY OIL-YIELD HISTOGRAM, WIRE-LINE WELL LOGS,
AND GENERALIZED LITHOLOGIC LOG FROM CORE HOLE EOS-6,
ELKO COUNTY, NEVADA

By
S.W. Moore

1983



This report has not been edited for conformity with U. S. Geological Survey editorial standards or stratigraphic nomenclature.