

C
SOUTH

C'
NORTH

29 SOHO PET. CO. 130VY. SEASER BHM
NE 1/4 SW 1/4 sec. 27, T. 31 N., R. 95 W.
KB 4858

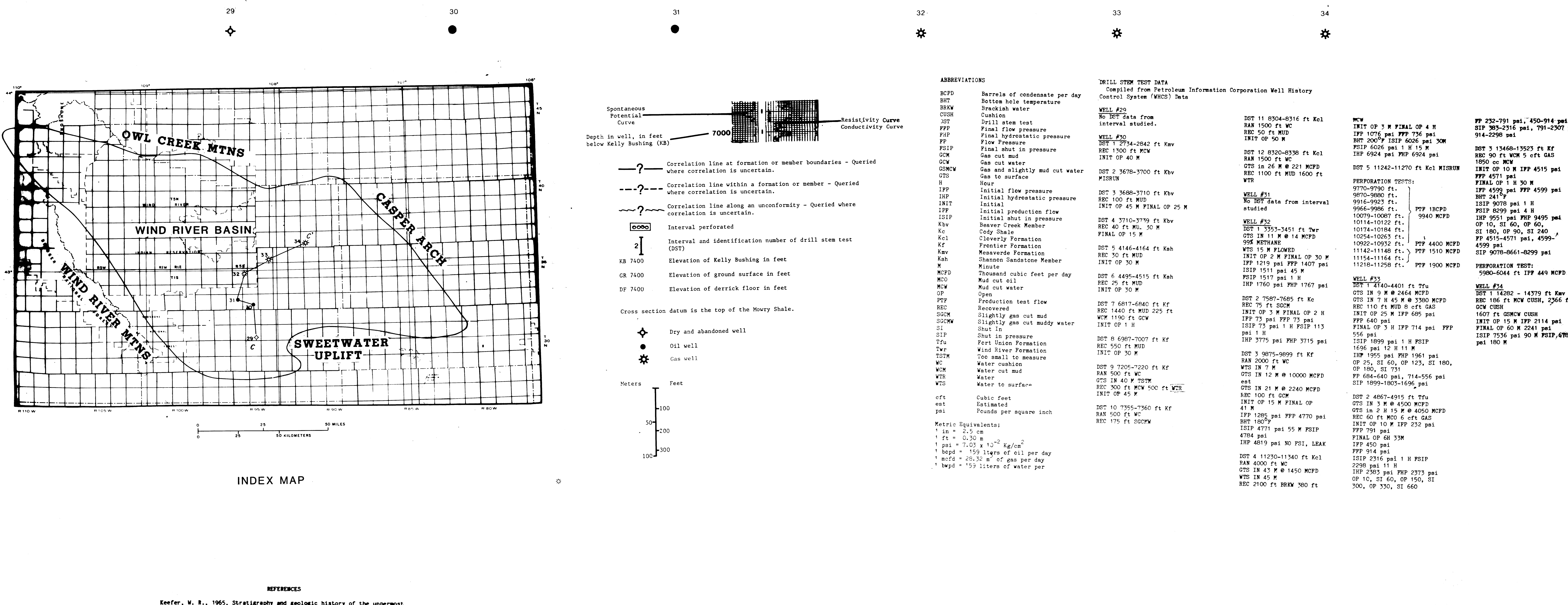
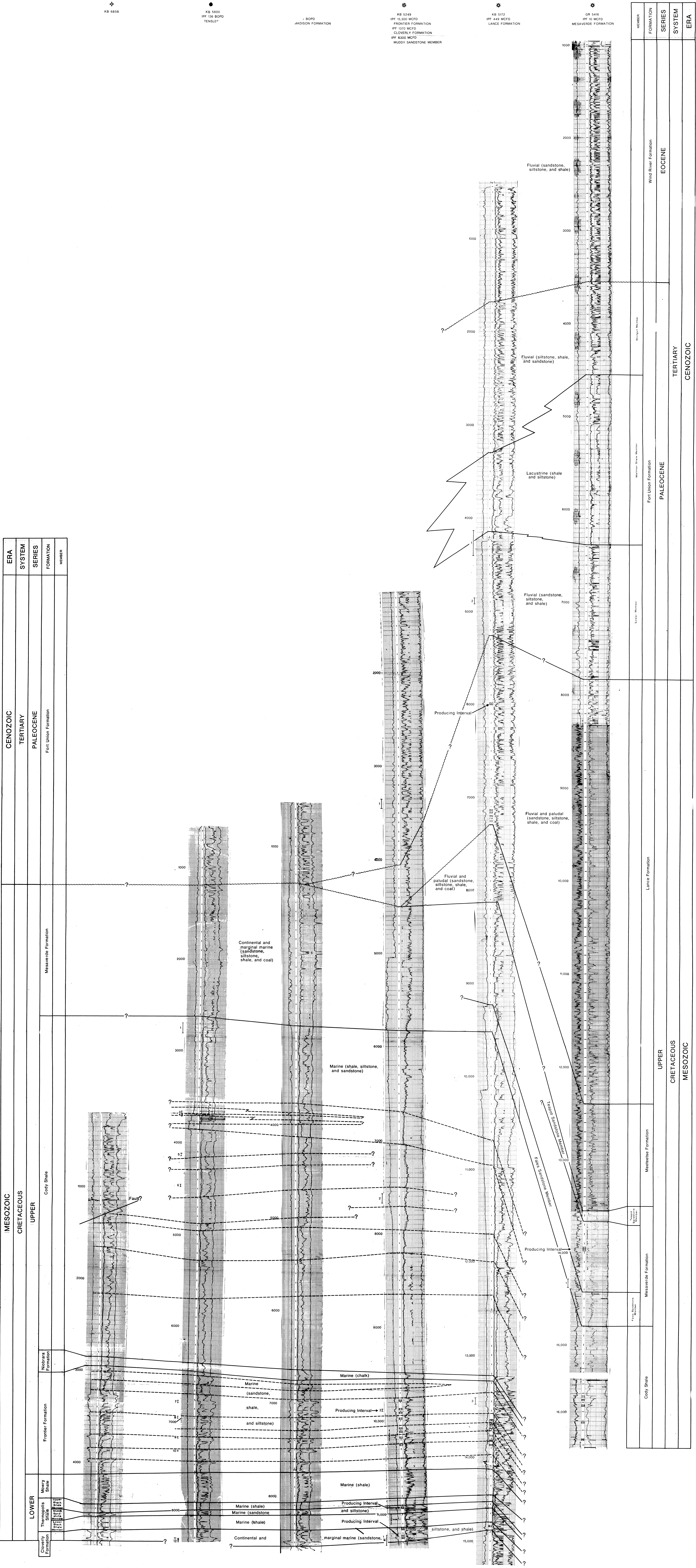
30 NORTH SAND DRAW FIELD
SINGULAR OIL AND GAS CO.
130VY. SAND DRAW NORTH
SE 1/4 SW 1/4 sec. 21, T. 33 N., R. 95 W.
KB 2600
130VY. BOPO
TENSLIT

31 BEAUF. JORD
JADISON FORMATION

32 RIVERTON EAST FIELD
CONTINENTAL OIL CO.
7388A.
SE 1/4 sec. 1, T. 1 S., R. 8 E.
KB 5249
130VY. MCFD
FRONTIER FORMATION
130VY. MCFD
CLOVELLY FORMATION
130VY. MCFD
MUDDY SANDSTONE MEMBER

33 FULLER RESERVOIR FIELD
PAN CANADIAN PET.
32-23 FULLER RESERVOIR II
SE 1/4 NW 1/4 sec. 25, T. 36 N., R. 84 W.
KB 5172
130VY. MCFD
LANCE FORMATION

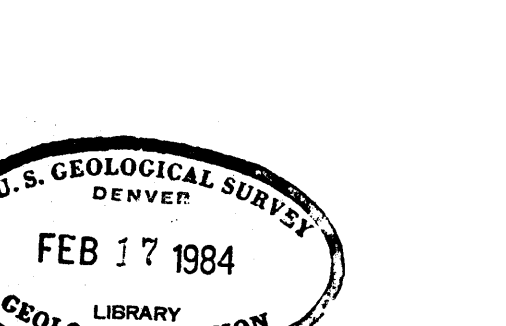
34 DOME PET.
130VY. MONETA LAST
SE 1/4 NW 1/4 sec. 29, T. 37 N., R. 91 W.
KB 5416
130VY. MCFD
MESSEVERE FORMATION



PRELIMINARY CHART 'C' SHOWING ELECTRIC LOG CORRELATION, FACIES, AND TEST DATA OF SOME CRETACEOUS AND TERTIARY ROCKS, WIND RIVER BASIN, WYOMING

BY
JAMES E. FOX AND ROBERT L. PRESTLEY

1983



Refer to...
Refer to...
Refer to...

This chart is preliminary and has been revised...
for consistency with the geological survey...
standards and stratigraphic nomenclature.