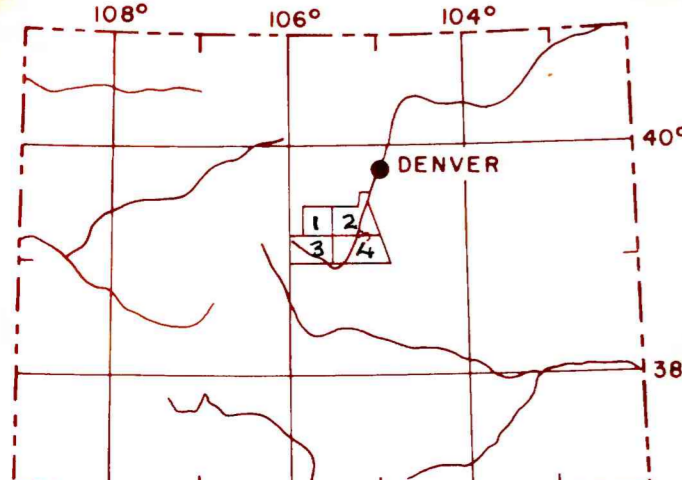
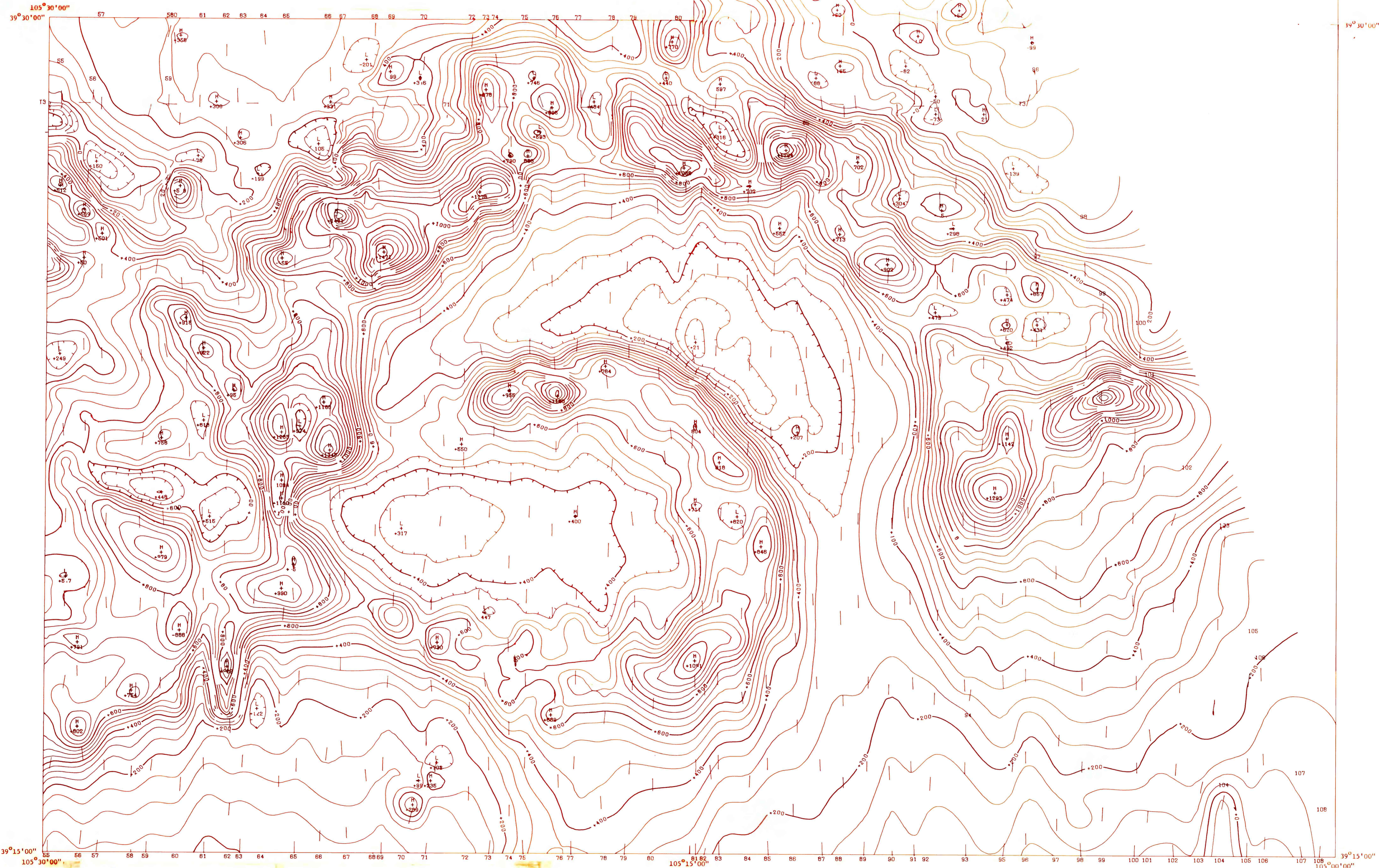
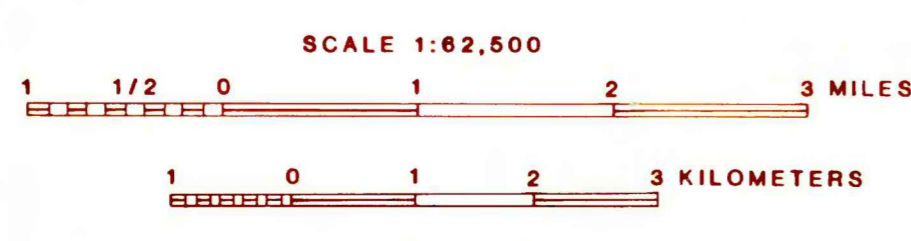


105°15'00"

105°00'00"  
39°37'30"



INDEX MAP OF COLORADO  
showing location of this study area



EXPLANATION

SURVEY DATE	3/28/82
MAGNETOMETER	GEOMETRICS 803
SAMPLING RATE	1 SEC.
SENSITIVITY	0.25 GAMMAS
FLIGHT ELEVATION	1000 FEET
LINE DIRECTION	FLT. INES N-S TIELINES E-W
LINE SPACING	0.5 MILES
REGIONAL FIELD REMOVED	ICRF 1975 UPDATED
CONTOUR INTERVAL	50 GAMMAS
GRID INTERVAL	200 METERS
DATA BIAS	-851 GAMMAS
TOTAL INTENSITY MAG VALUE	54985.63 GAMMAS
LOCATION OF VALUE	39.16°22' 10.29°53'
DATE AND TIME	5/20/81 0953

Flown and compiled by: High Life - QEB, Inc.

AEROMAGNETIC MAP OF PART OF THE  
PIKE NATIONAL FOREST AND VICINITY, COLORADO

BY  
U.S. GEOLOGICAL SURVEY

1983

This map was prepared under contract to the U.S. Geological Survey and has not been reviewed for conformity with USGS editorial standards. Opinions and conclusions expressed herein do not necessarily represent those of the USGS. Any use of trade names is for descriptive purposes only and does not imply endorsement by the USGS.