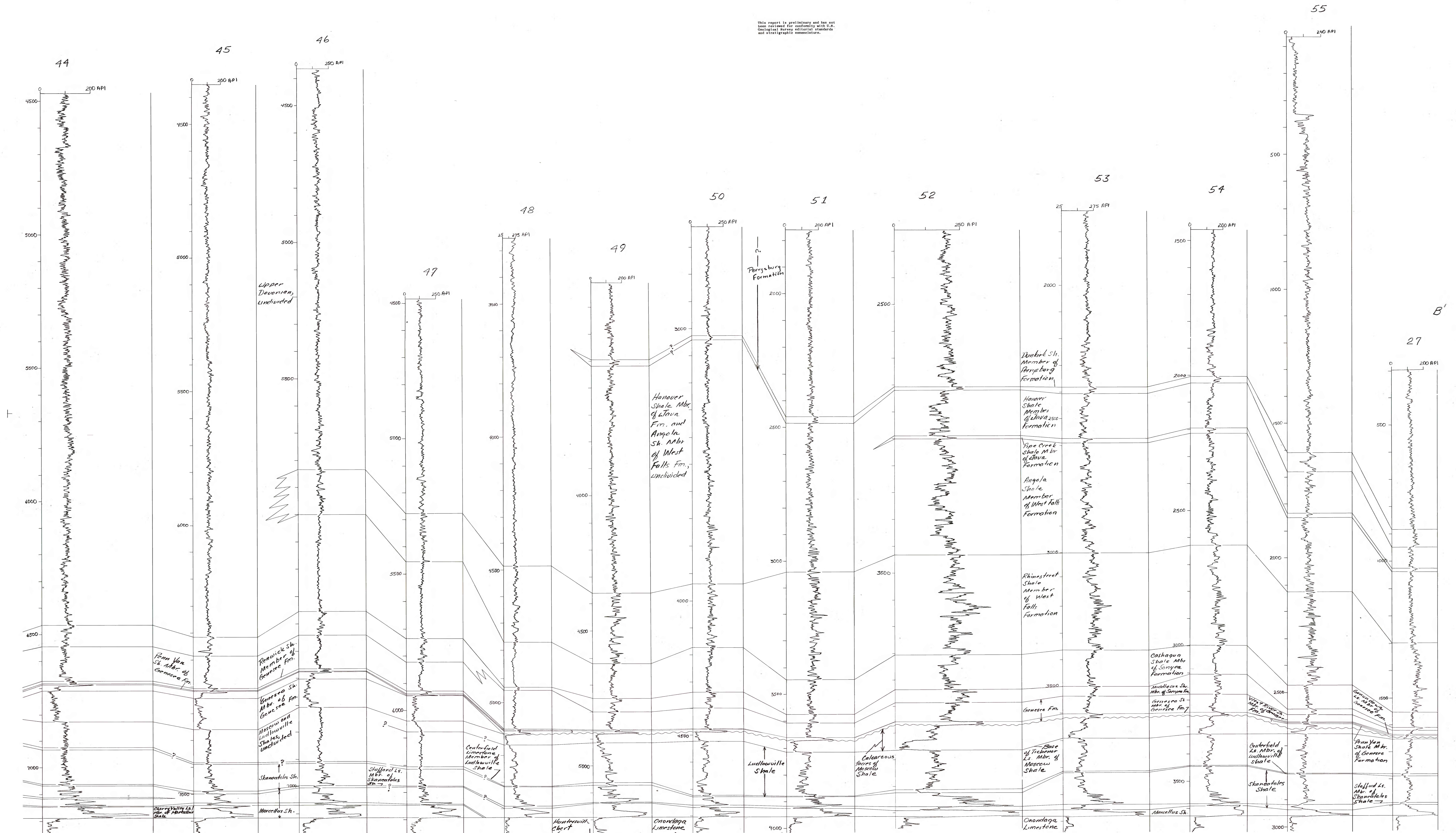


STRATIGRAPHIC CROSS SECTION BB' SHOWING THE DEVONIAN BLACK SHALES AND RELATED ROCKS IN THE CENTRAL PART OF THE APPALACHIAN BASIN

This report is preliminary and has not
been reviewed for conformity with U.S.
Geological Survey editorial standards
and stratigraphic nomenclature.



B'

27