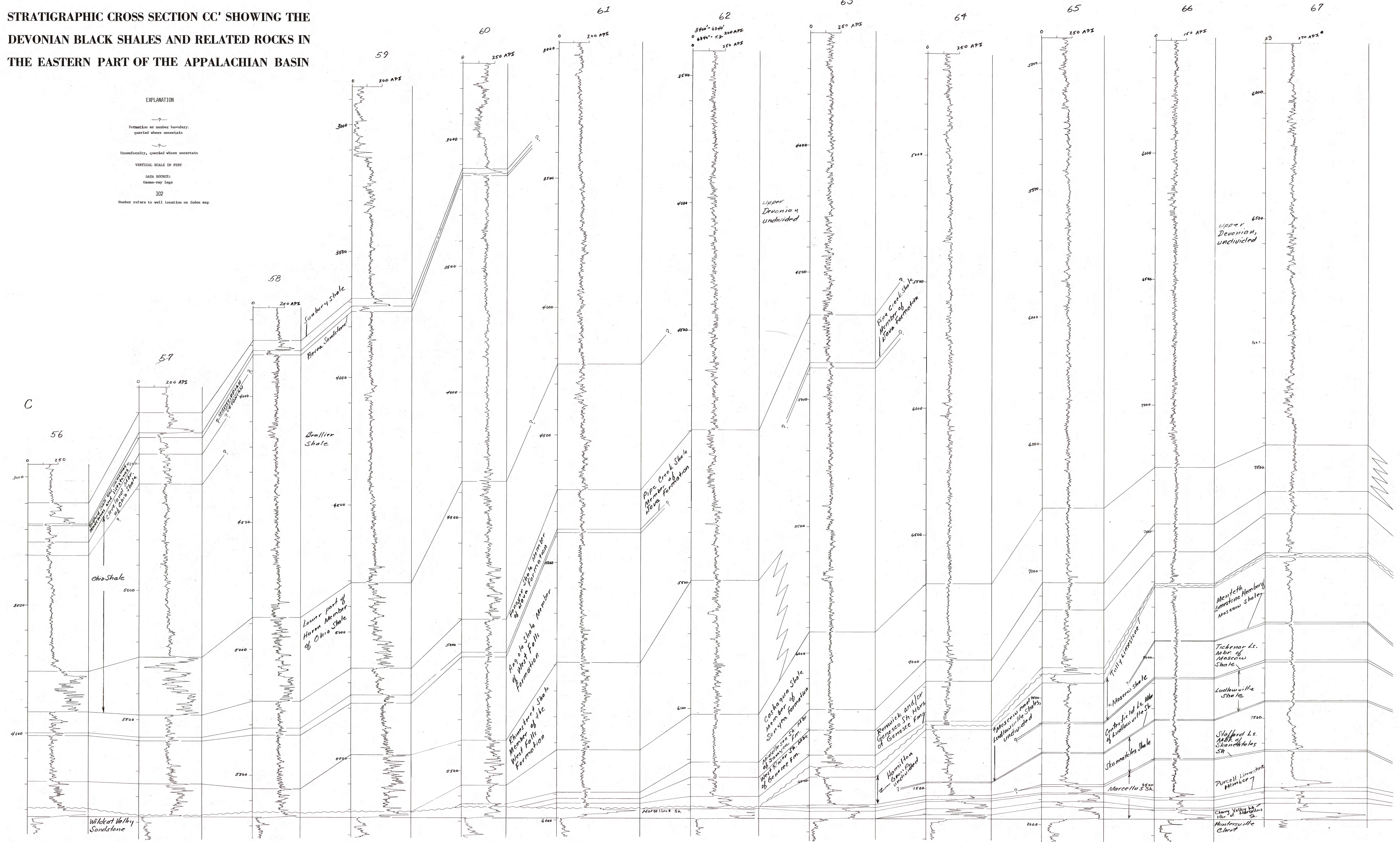


**STRATIGRAPHIC CROSS SECTION CC' SHOWING THE  
DEVONIAN BLACK SHALES AND RELATED ROCKS IN  
THE EASTERN PART OF THE APPALACHIAN BASIN**



\* Approximate conversion to API units  
Conversion factors from Douglas W. Hilchie (1979).

This report is preliminary and has not been reviewed for conformity with U.S. Geological Survey editorial standards and stratigraphic nomenclature.