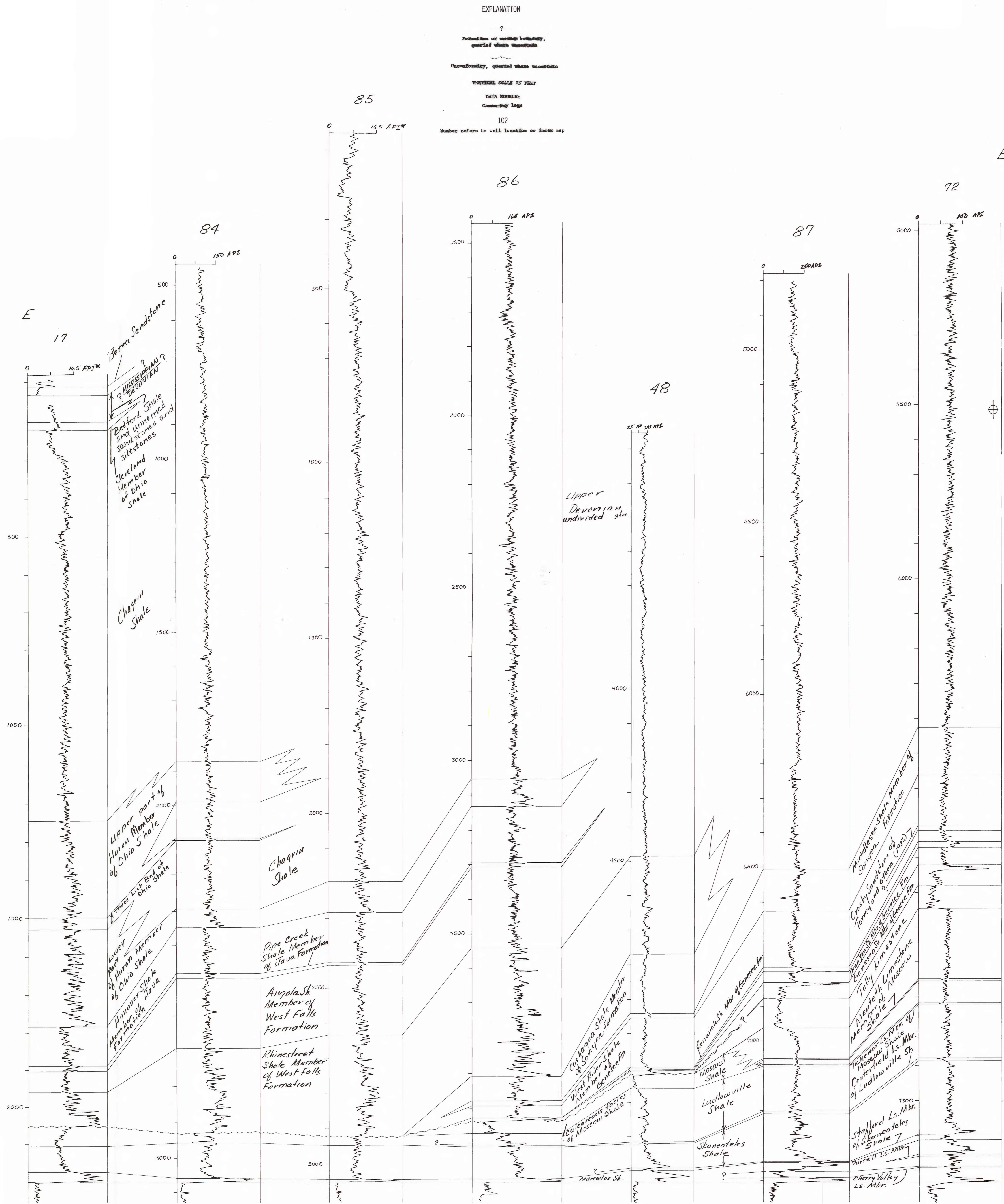


STRATIGRAPHIC CROSS SECTION EE' SHOWING THE DEVONIAN BLACK SHALES AND RELATED ROCKS IN EASTERN OHIO AND CENTRAL PENNSYLVANIA



*Approximate conversion to API units.
Conversion factors from Douglas W. Hilchie (1979).

This report is preliminary and has not
been reviewed for conformity with U.S.
Geological Survey editorial standards
and stratigraphic nomenclature.