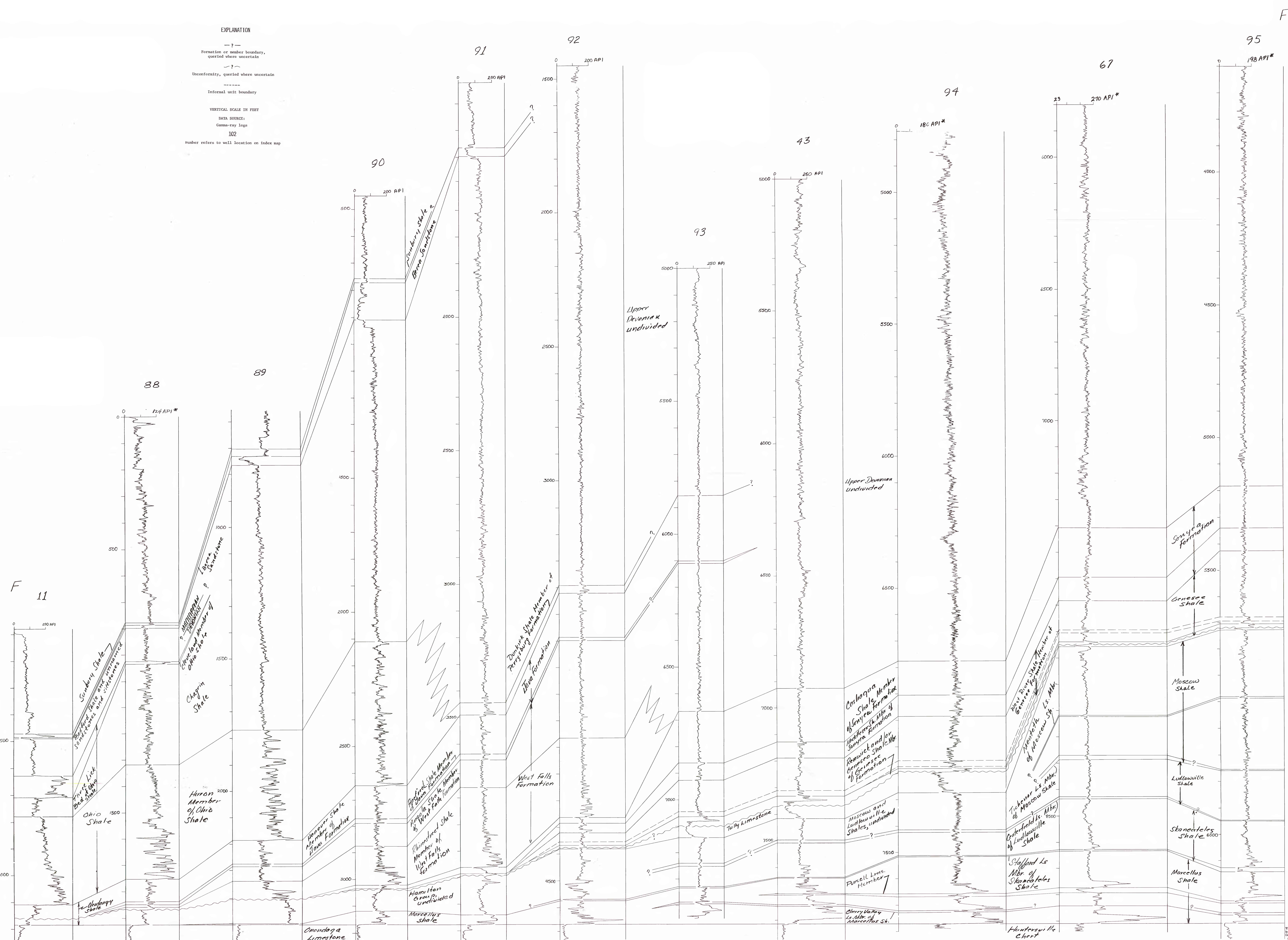


STRATIGRAPHIC CROSS SECTION FF' SHOWING THE DEVONIAN BLACK SHALES AND RELATED ROCKS IN CENTRAL OHIO AND SOUTHWESTERN PENNSYLVANIA



\* Approximate conversion to API units  
Conversion factors from Douglas W. Nelche (1979).

This report is preliminary and has not been reviewed for conformity with U.S. Geological Survey editorial standards and stratigraphic nomenclature.