

STRATIGRAPHIC CROSS SECTION GG' SHOWING THE DEVONIAN BLACK SHALES AND RELATED ROCKS IN SOUTHERN OHIO AND WESTERN WEST VIRGINIA

EXPLANATION

---?---
Formation or member boundary;
united where uncertain

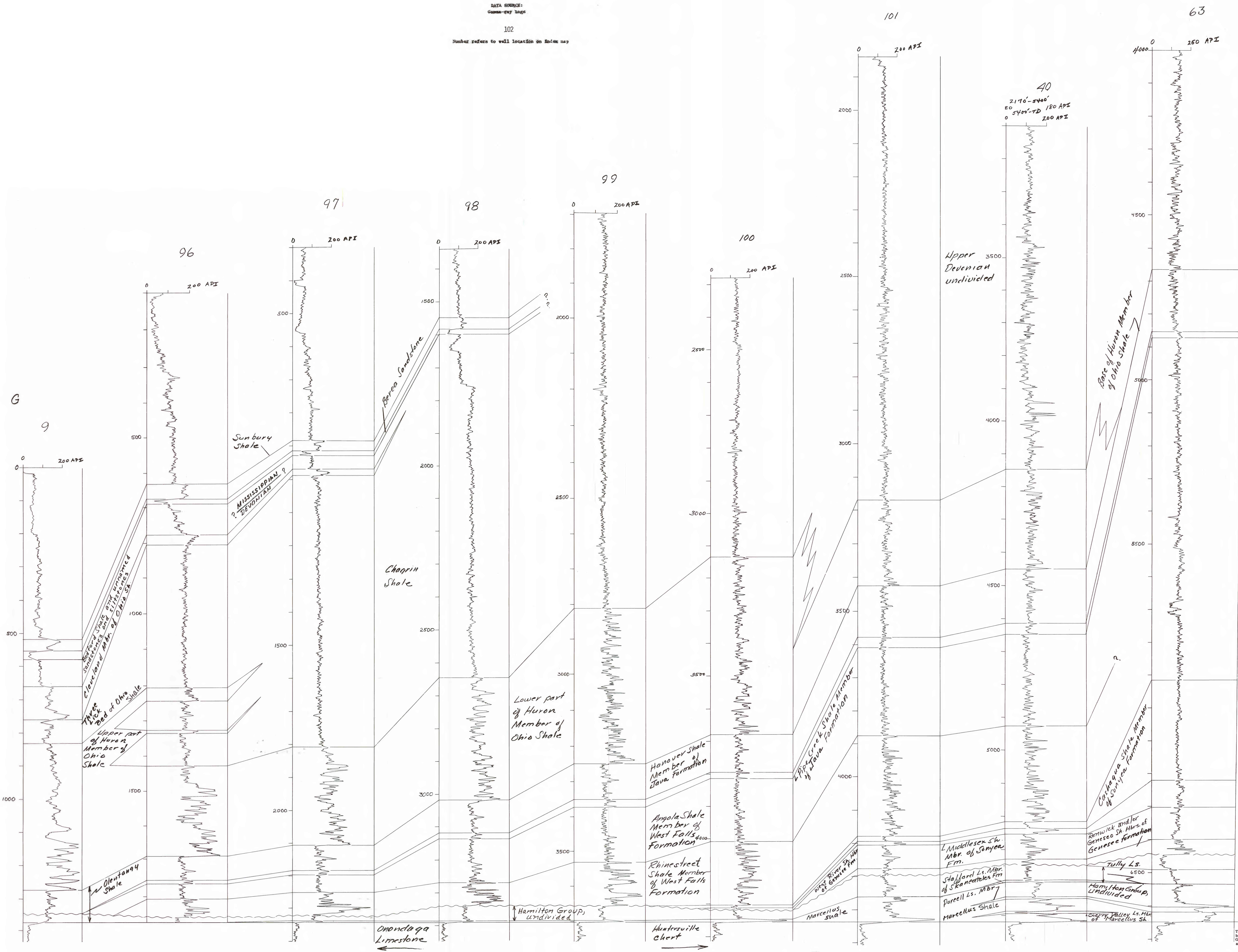
Discontinuity

VERTICAL SCALE IN FEET

DATA SOURCE:
Cameo-ray logs

102

Number refers to well location on basin map



This report is preliminary and has not been reviewed for conformity with U.S. Geological Survey editorial standards and stratigraphic nomenclature.