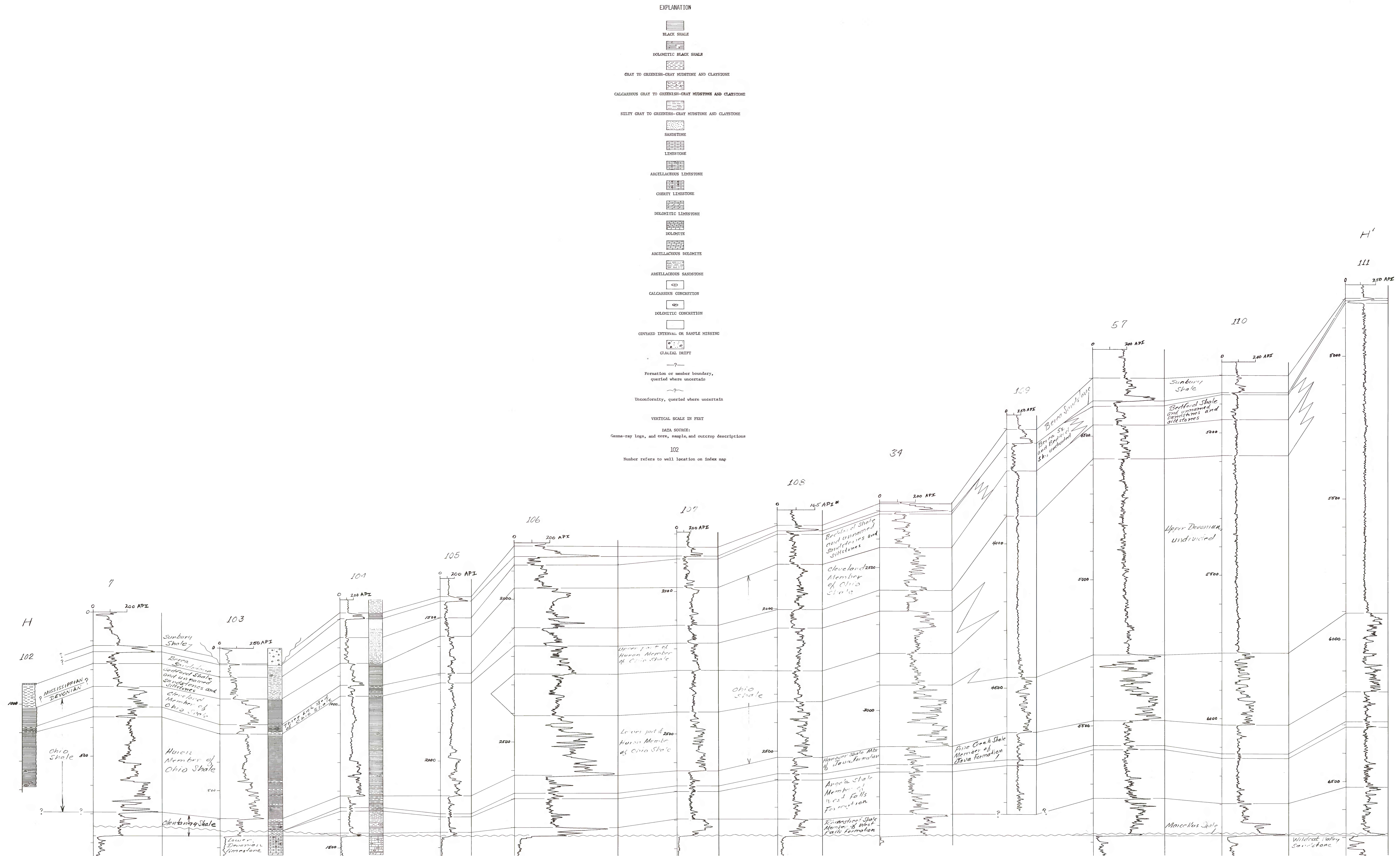


STRATIGRAPHIC CROSS SECTION HH' SHOWING THE DEVONIAN BLACK SHALES AND RELATED ROCKS IN SOUTHERN OHIO, EASTERN KENTUCKY AND SOUTHWESTERN VIRGINIA



* Approximate conversion to API units.
Conversion factors from Douglas W. Hilchie (1979).

This report is preliminary and has not been reviewed for conformity with U.S. Geological Survey editorial standards and stratigraphic nomenclature.