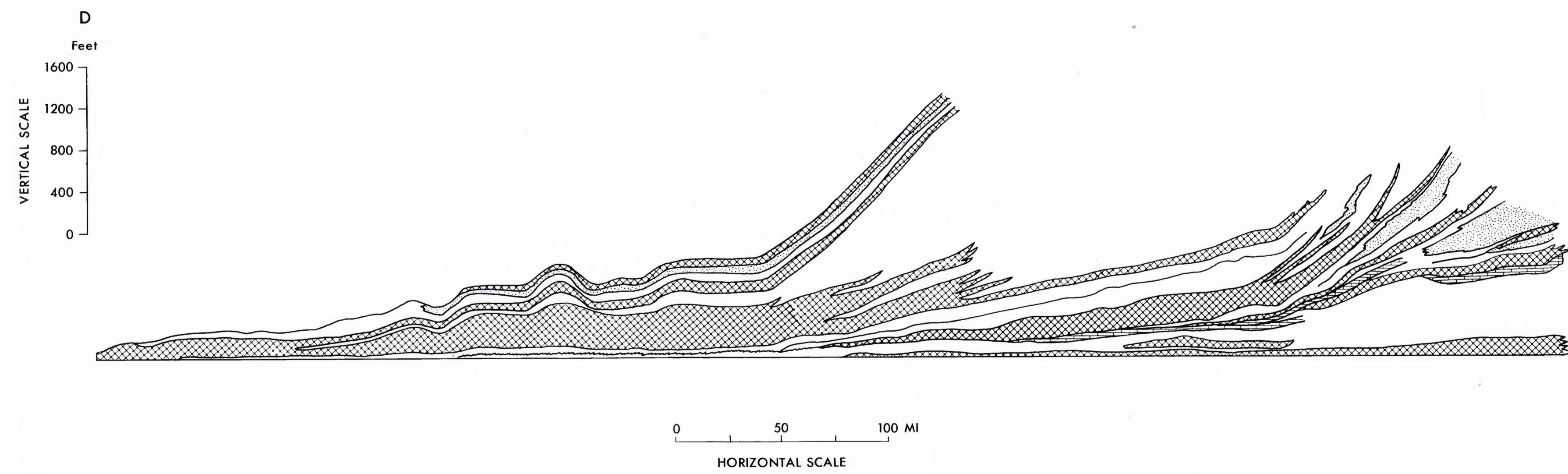
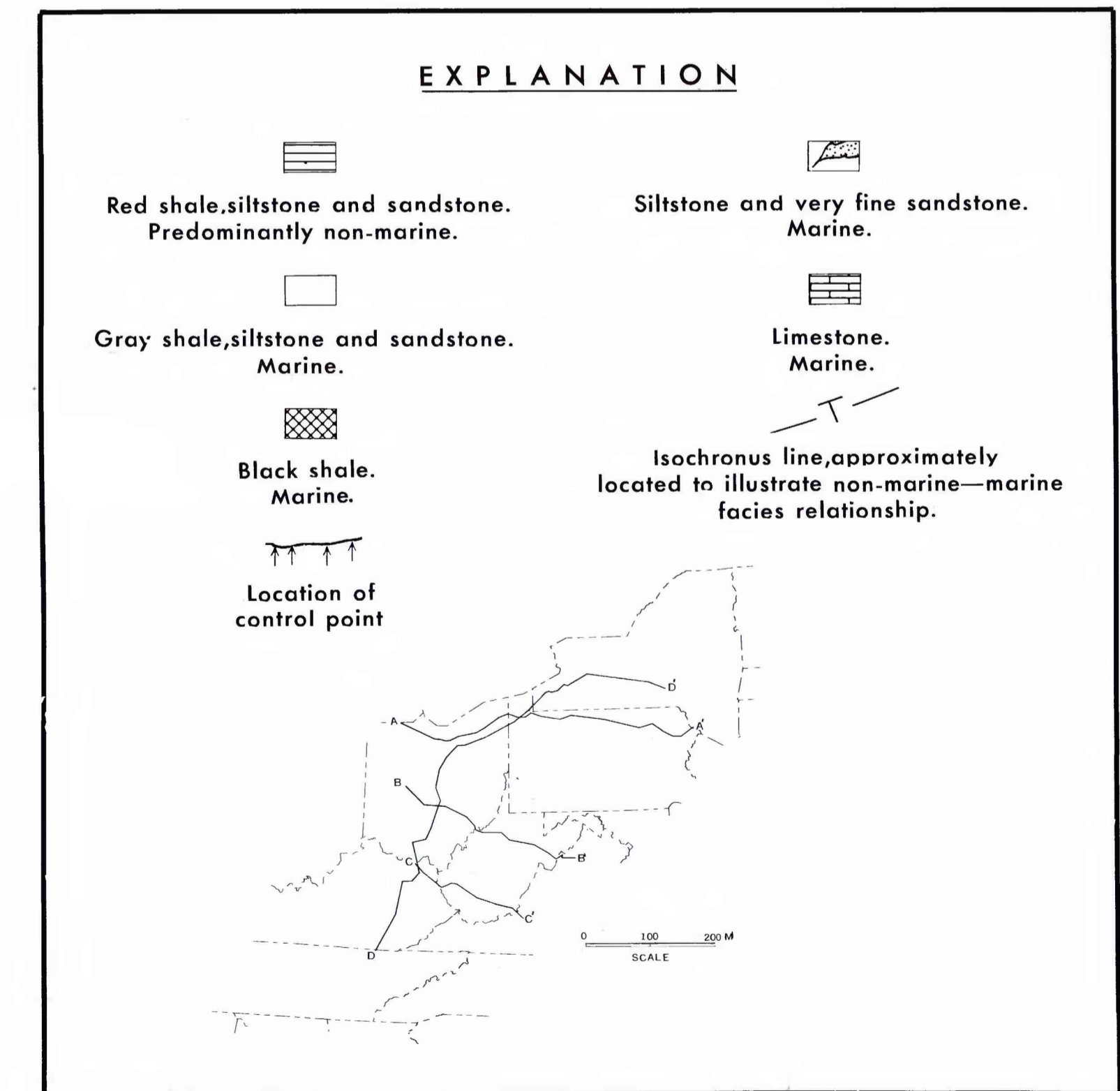


Sections A-A', B-B', and C-C' modified from Oliver, deWitt, Dennison, Hoskins and Huddle (1971).



Eastern 120 miles of section D-D' modified from deWitt and Colton (1959).



**GENERALIZED STRATIGRAPHIC SECTIONS SHOWING THE FACIES RELATIONSHIP OF THE DEVONIAN BLACK SHALES AND RELATED ROCKS OF THE APPALACHIAN BASIN**