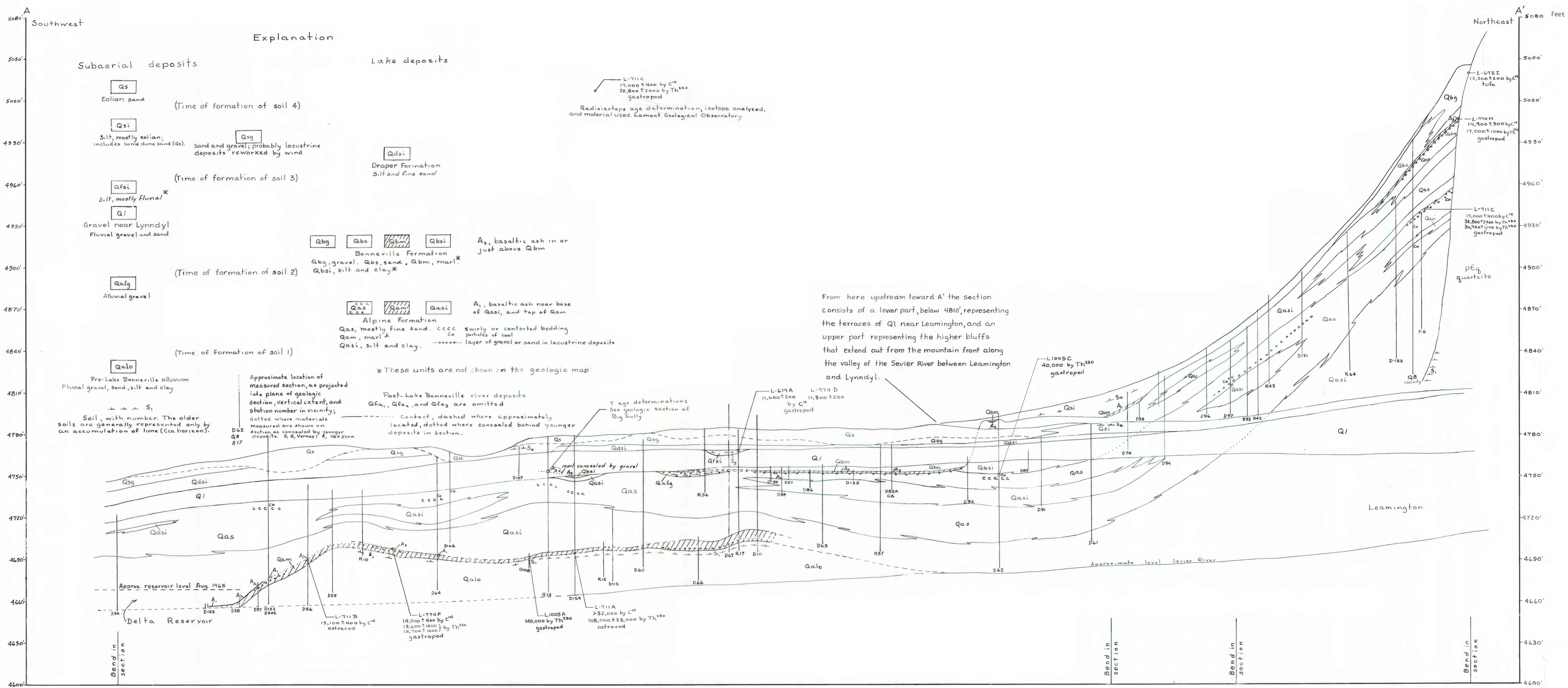


Geologic section of the Big Gully
near Delta, Utah
NW 1/4, sec. 10, T16S, R5W



Generalized geologic section along the Sevier River Valley from Delta Reservoir to Leamington

0 1 2 3 miles
Horizontal scale
Vertical exaggeration X80

This diagrammatic section was prepared by projecting information from exposures on both sides of the Sevier River valley to the line A-A' in the approximate center of the valley.

GENERALIZED GEOLOGIC SECTIONS OF THE OAK CITY AREA, MILLARD COUNTY, UTAH

SURFICIAL GEOLOGIC MAP OF THE OAK CITY AREA, MILLARD COUNTY, UTAH

By David J. Varnes and Richard Van Horn
1964

This map is preliminary and has not been reviewed for conformity with U.S. Geological Survey editorial standards and stratigraphic nomenclature.